

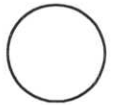
# MARATHON COUNTY U.S. PUBLIC LAND SURVEY MONUMENT LOCATION RECORD

LANDMARK     BENCHMARK: \_\_\_\_\_

SECTION 36

TOWNSHIP 31 N

RANGE 6 E



CORNER LOCATION AND MONUMENT: SW COR. SEC 36 1" IRON PIPE

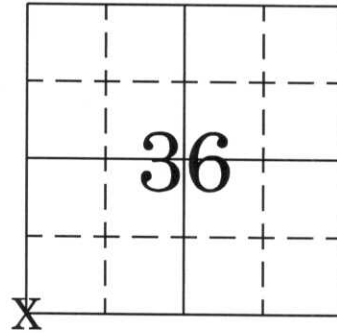
COUNTY COORDINATE: N \_\_\_\_\_, E \_\_\_\_\_

SCOTT  
~~CITY, VILLAGE, TOWN~~  
SECTION

DATE OF SURVEY: 8-30-2006 TEMPERATURE: \_\_\_\_\_ °

SURVEY PARTY/COMPANY: C.J. NOWACZYK, E.K. PIERCE

FIELD BOOK NO. \_\_\_\_\_ PAGE NO. \_\_\_\_\_



## BASIS FOR MONUMENT LOCATION:

(DESCRIBE METHOD OF SURVEY AND CORNER AUTHENTICATION)

FOUND   
SET   
RE-SET   
RE-TIED

APRIL 7, 1975 DAVE TLUSTY TIED OUT CORNER. SHOWS 4 TIES. DOES NOT STATE WHAT CORNER WAS MONUMENTED WITH OR HOW IT WAS ESTABLISHED.

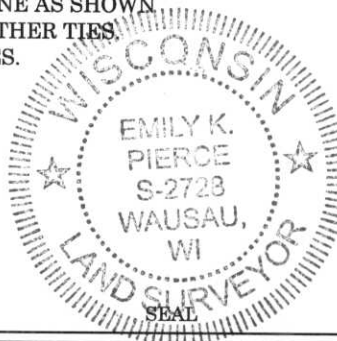
AUGUST 30, 2006 SEARCHED FOR CORNER AND FOUND A 1" I.D. IRON PIPE. FIT DISTANCE FROM CENTERLINE AS SHOWN ON PREVIOUS TIESHEET. DID NOT FIND ANY OTHER TIES. ACCEPTED AS CORNER AND SET FOUR NEW TIES.

LOCATION  
(indicated by X)

CERTIFIED CORRECT

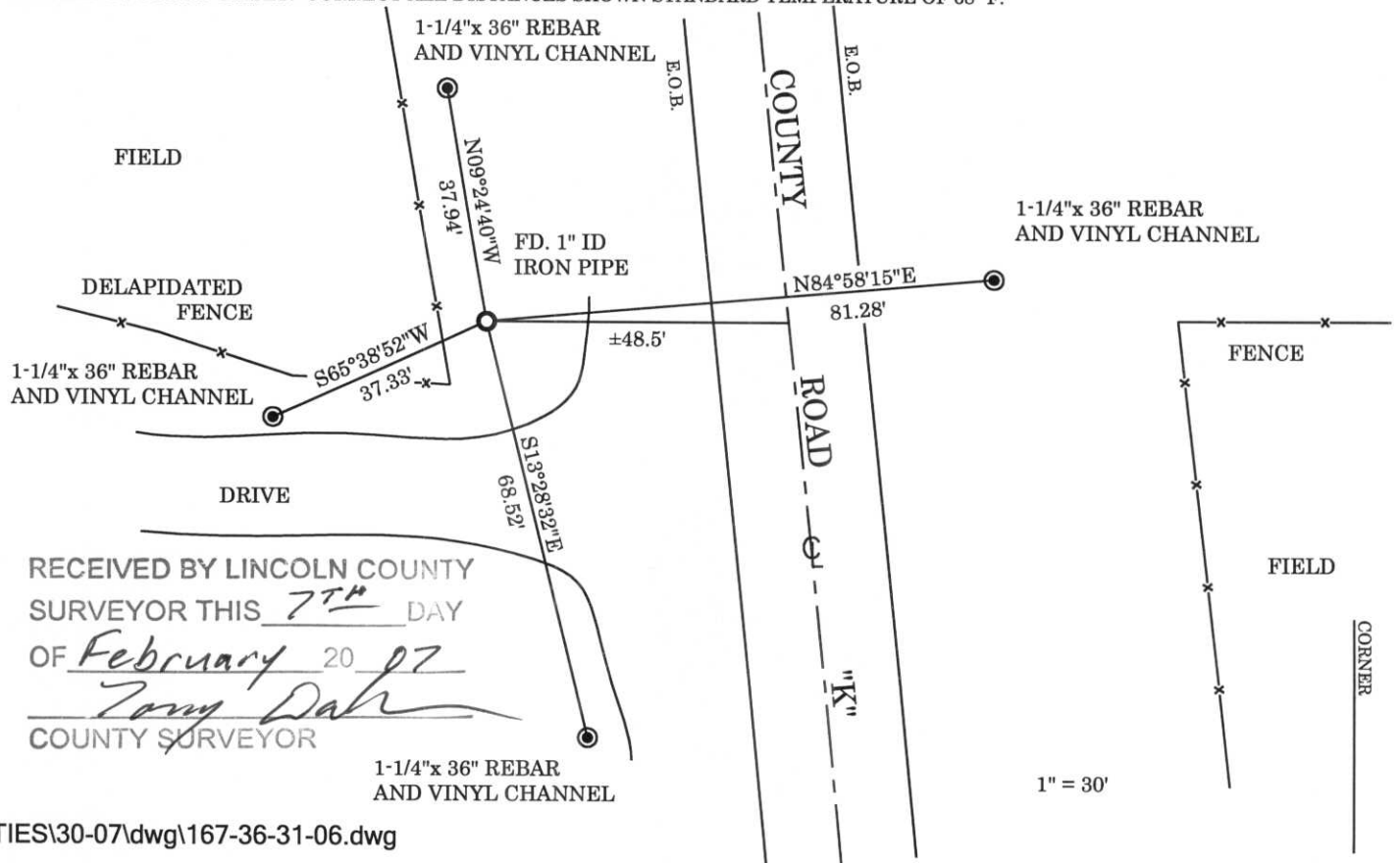
*Emily K Pierce*

DATE: 9-21-2006



## TIE SKETCH:

SHOW MINIMUM OF FOUR (4) HORIZONTAL TIE DISTANCES TO FIXED WITNESS MONUMENTS. DESCRIBE ALL MONUMENTS FOUND OR SET. CORRECT ALL DISTANCES SHOWN STANDARD TEMPERATURE OF 68° F.



RECEIVED BY LINCOLN COUNTY  
SURVEYOR THIS 7<sup>TH</sup> DAY  
OF February 20 07  
*Tony Dah*  
COUNTY SURVEYOR

1-1/4" x 36" REBAR  
AND VINYL CHANNEL

1" = 30'

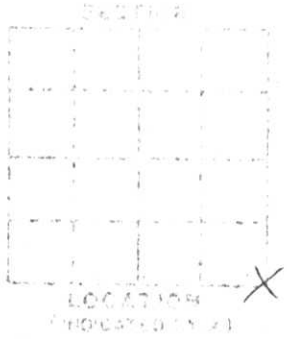
MINK  
SURVEY MONUMENT LOCATION RECORD

LANDMARK  BENCHMARK

CORNER IDENTITY SE COR SEC 35  
 DATE OF SURVEY APRIL 7, 1995  
 WEATHER CLEAR BREEZY  
 TEMPERATURE 40°  
 SURVEY PARTY D. TRUSTY, D. MITTINGLY

FOUND   
 SET   
 RE-SET   
 RE-TIED

SHEET NO. 35  
 TOWNSHIP 31N  
 RANGE 6E  
 COUNTY SCOTT LINCOLN CO.



BASIS FOR MONUMENT LOCATION

DESCRIBE METHOD OF SURVEY AND CORNER AUTHENTICATION

*SEE SURVEY FOR HARTUNG-DOEPKE*

TIE SKETCH SHOW HORIZONTAL TIE DISTANCES TO FIXED WITNESS MONUMENTS. DESCRIBE ALL MONUMENTS FOUND OR SET

