

U.S. PUBLIC LAND SURVEY MONUMENT RECORD

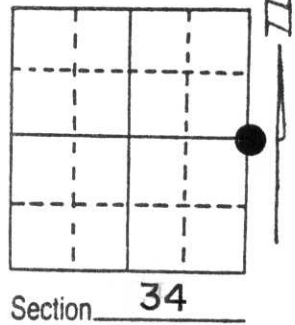
Note: This form is intended and designed to fulfill all requirements of Wisconsin Administrative Code, Chapter A-E 5.02, U.S. Public Land Survey Monument Record (3) (a) (b) (c) (d) (e) (f) (g) (h) (i). An additional sheet may be added if necessary to conform with said requirements.

(a) Corner location: Township 31 North

Range 6 East

Town/City/Village TN SCOTT

County LINCOLN



(b) (f) (g) (h) Description of monument found at this corner and if it was accepted, state all evidence (material, testimonial, occupational, plats, records, other monuments) used as a basis for accepting. If not accepted or if nothing was found, state evidence used as basis for establishing location. If reestablished through lost corner proportionate methods, indicate all monuments, distances and directions used to establish.

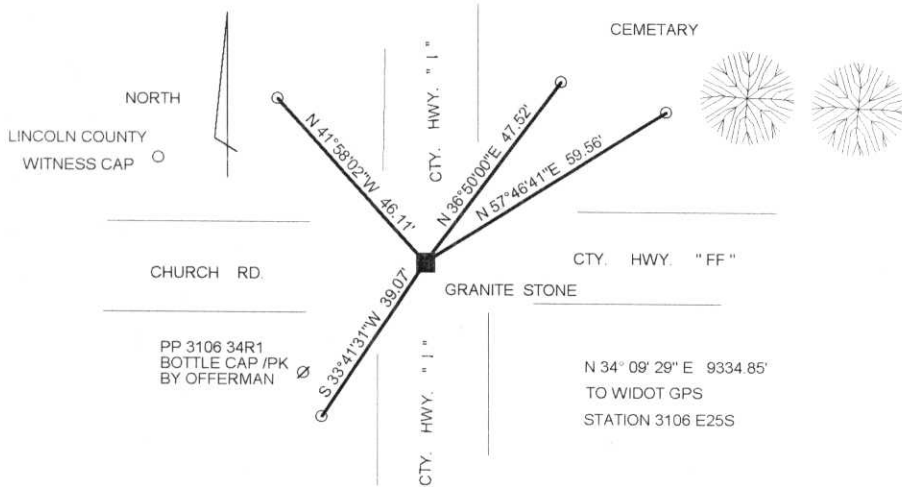
APRIL 1975 TLUSTL & MATTINGLY SET A PK AT C/LC/L HWYS. "FF" & "F" ESTABLISHED 3 TIE TO THE PK

WE DUG THE INTERSECTION AND FOUND A 6"x6" GRANITE STONE ± 2.62' TO THE NORTHWEST OF A PK SET C/L C/L. ALSO FOUND THE PP TIE BY TLUSTY & MATTINGLY.

THE STONE MATCHES THE OTHERS FOUND ALONG HWY. "I" PRESUMED SET BY KLINESCHMIDT IN 1902

(c) (d) (e) Plan view of corner with ties to at least 4 witness monuments. If in disagreement with previously established corner, show the distances between the two corners and also indicate the ties to the disputed corner.

RECEIVED AT LINCOLN COUNTY
 COURTHOUSE THIS 28th DAY
 OF June 1996
 OF Pat Lemke
 TAX DESCRIPTION OFFICE



(i) I, DAVID L. LEMKE
 (type or print name) certify that the corner location on this record was determined by me or under my direction and control and that this U.S. Public Land Survey Monument Record is correct and complete to the best of my knowledge and belief.

David L. Lemke

JUN. 18 1996

Signature

Date



Index No. M-17

MINK CAPITAL SURVEYING, INC.
 SURVEY MONUMENT LOCATION RECORD

LANDMARK BENCHMARK

CORNER IDENTIFY E 1/4 COR
 DATE OF SURVEY APRIL 7, 1975
 WEATHER CLEAR BREEZY
 TEMPERATURE 40° F
 SURVEY PARTY D. TUSTY, D. MATTINGLY

PLAT
 SET
 REPEL
 RE-TRIP

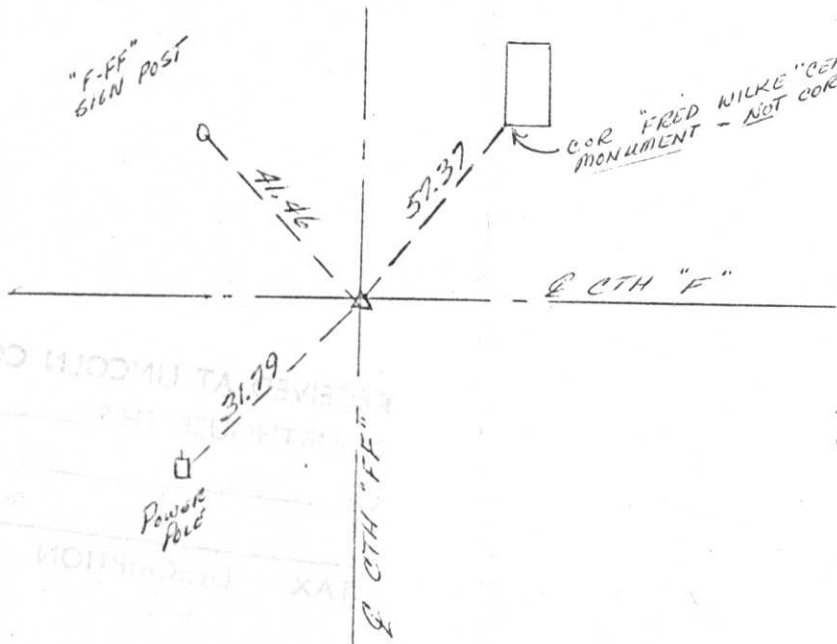
SECTION 5A
 TOWNSHIP 31 N
 RANGE 9 E
 COUNTY SCOTT STATE ILLINOIS
 CITY SPRINGFIELD COUNTY LINCOLN CO



BASIS FOR MONUMENT LOCATION
 DESCRIBE METHOD OF SURVEY AND CORNER AUTHENTICATION

SEE SURVEY FOR HARTWIG - DOEPKE

TIE SKETCH SHOW HORIZONTAL TIE DISTANCES TO BE WITNESSED MONUMENTS. RECORD ALL MONUMENTS FOUND TO SET



TIES ARE TO NAILS AND BOTTLECAPS IN POWER POLE & SIGN POST

SET NAIL AT INTERSECTION OF Q'S FOR CORNER

YTHUOD HJODMU TA...
 YAO...
 ORICE...
 TAX...
 Q CTH FF