

# U S PUBLIC LAND SURVEY MONUMENT RECORD

NOTE: This form is intended and designed to fulfill all requirements of Wisconsin Administrative Code, Chapter A-E 7.08 U.S. Public Land Survey Monument Record (3) (a-i)

A-E 7.08(3)(a) Identity of corner:  
 SOUTH 1/4 CORNER SECTION 34,  
 TOWNSHIP 31 NORTH,  
 RANGE 06 EAST OF THE 4TH PM,  
 TOWN OF SCOTT,  
 COUNTY OF LINCOLN

WISCORS - LINCOLN COUNTY  
 N: 100,467.448 USft (100,467.384)  
 E: 383,369.711 USft (383,369.732)  
 Datum: NAD83 (2011)  
 GNSS Method RTN - Direct  
 GNSS Control WISCORS VRS



The coordinate value shown has been verified by the average of two or more GPS observations at a markedly different time. Coordinates shown in parenthesis are provided by Lincoln County.

A-E 7.08(3)(b)

Original Surveyor: James M. Marsh

Date of Original Survey Commenced: May, 1851  
 Completed: May, 1851

Original Accessories:  
 Sugar 8 N 52° E 43 Links  
 Hemlock 18 N 30° W 66 Links  
 Birch 16 N 49° W 34 Links  
 Hemlock 18 N 75° W 39 Links

June 20, 1903 - Surveyors: L. Kleinschmidt and Herman Rusch - indicate they set a stone at this position on Map M56B.

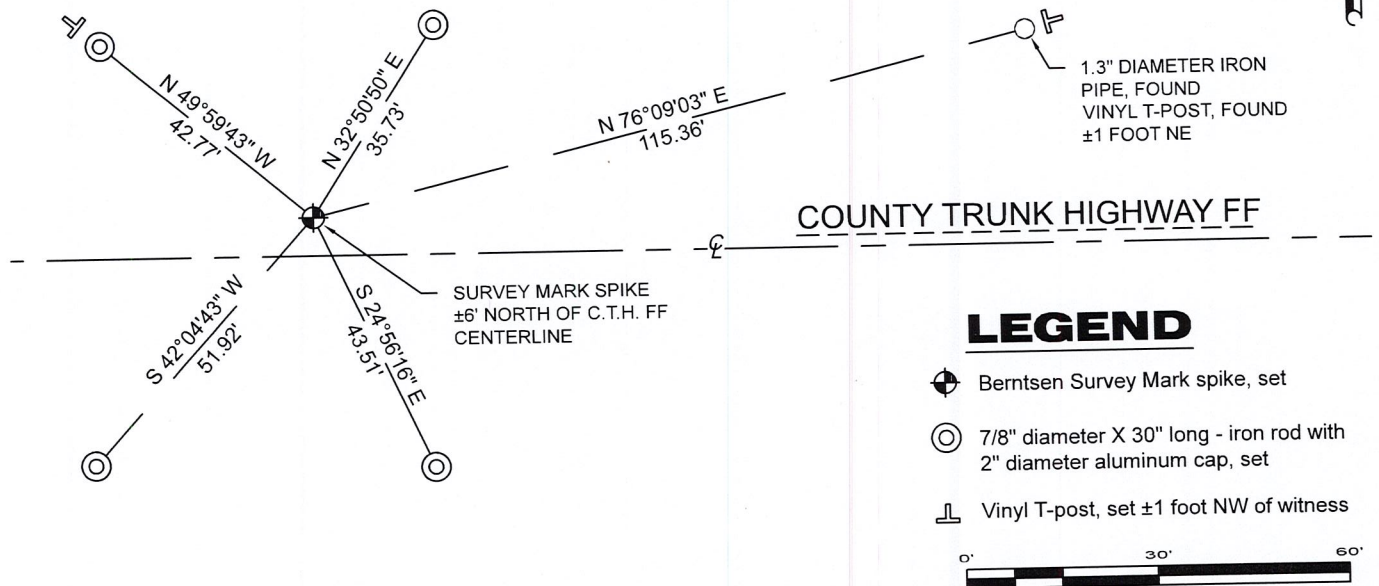
June 18, 2019 - Surveyor 3148 - Jason J. Pflieger - indicates this position as "existing stone, coordinate provided by County Surveyor" on Map S695B.

April 19, 2022 - While performing the 2022 Lincoln County PLSS Corner Remonumentation and GPS Services project, I went to the coordinate position provided by Lincoln County, I made a careful search of the area and found no evidence of the corner or witnesses. The County provided location is 6 feet north of C.T.H. FF centerline. Under the direction of Lincoln County, I restored the position using County provided coordinates and set a Berntsen Survey Mark steel spike 3" long with a 1" diameter dimpled head. I established 5 new reference monuments as shown below.

RECEIVED BY LINCOLN COUNTY  
 SURVEYOR THIS 19<sup>TH</sup> DAY  
 OF September 20, 22  
*Jeffrey DeMuth*  
 COUNTY SURVEYOR

A-E 7.08(3)(c)(d) Plan view of corner with references to at least 4 witness monuments.

BEARINGS LISTED TO THE NEAREST SECOND ARE REFERENCED TO WISCONSIN COUNTY COORDINATE REFERENCE SYSTEM - LINCOLN COUNTY ZONE. ALL OTHER BEARINGS ARE MAGNETIC



A-E 7.08(3)(e) 1851 Surveyor set a post, 1903 Surveyor set a stone, 2019 Surveyor refers to a stone by County Surveyor testimony. I set a Berntsen Survey Mark steel spike at coordinates provided by Lincoln County.

A-E 7.08(3)(f) I restored the corner through ACCEPTANCE OF AN OBLITERATED LOCATION.

A-E 7.08(3)(g)(h) This corner was not determined through lost-corner-proportionate methods.

A-E 7.08(3)(i) I, Jeffrey L. DeMuth, Professional Land Surveyor No. S-2656, hereby certify that the corner location on this record was determined by the Lincoln County Surveyor, and the monuments found or set as shown hereon were measured by me or under my direction and control, and that this U.S. Public Land Survey Monument Record is correct and complete to the best of my knowledge, and belief.



SIGNATURE

September 16, 2022

DATE

## REPORT

### 2022-Lincoln County PLSS Corner Remonumentation and GPS Services

Wisconsin Corner Point Identification Number: 43106340020

Surveyor: Jeffrey L. DeMuth – S2656

Corner monument: Set Berntsen "Survey Mark" steel spike, 1" diameter head, 3" long at coordinates provided.

Field Book: Cardinal North – Lincoln Co. Remon. – 2022-00

Page: 7

Horizontal Datum: WisCRS – Lincoln County Zone – NAD83(2011)

Date / time of initial measurement:

May 17, 2022 - Start 10:06:30 CDT – End 10:12:20 CDT

Reference monuments:

4 – Set - 7/8" diameter X 30" long iron rods with 2" diameter Lincoln Co. aluminum cap.

1 – Found – 1.3" diameter iron pipe with vinyl T-post 1 foot northeast.

#### Coordinate Table

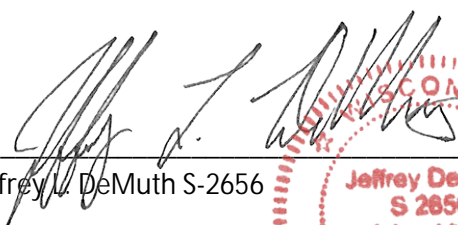
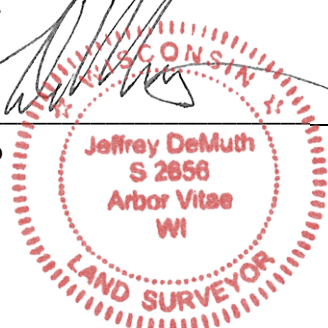
	County Provided	2022 Measurement	Difference
North	100467.384	100467.448	-0.06
East	383369.732	383369.711	0.02

Established coordinates match existing calculated coordinates within reason.

Request Data Log for more information.

Additional Notes:

Corner falls  $\pm 6'$  north of CTH FF centerline. There is a N-S fence line heading north from the corner.

  
 Jeffrey L. DeMuth S-2656
 
 September 16, 2022  
 Date



43106340020\_Mon-N





43106340020\_North





43106340020\_West





43106340020\_South





43106340020\_East

