

U.S. PUBLIC LAND SURVEY MONUMENT RECORD

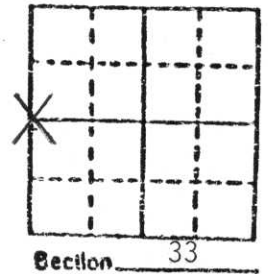
Note: This form is intended and designed to fulfill all requirements of Wisconsin Administrative Code, Chapter A-E 5.02, U.S. Public Land Survey Monument Record (3) (a) (b) (c) (d) (e) (f) (g) (h) (i). An additional sheet may be added if necessary to conform with said requirements.

(a) Corner location: Township 31 North

Range 6 East

Town SCOTT

County LINCOLN

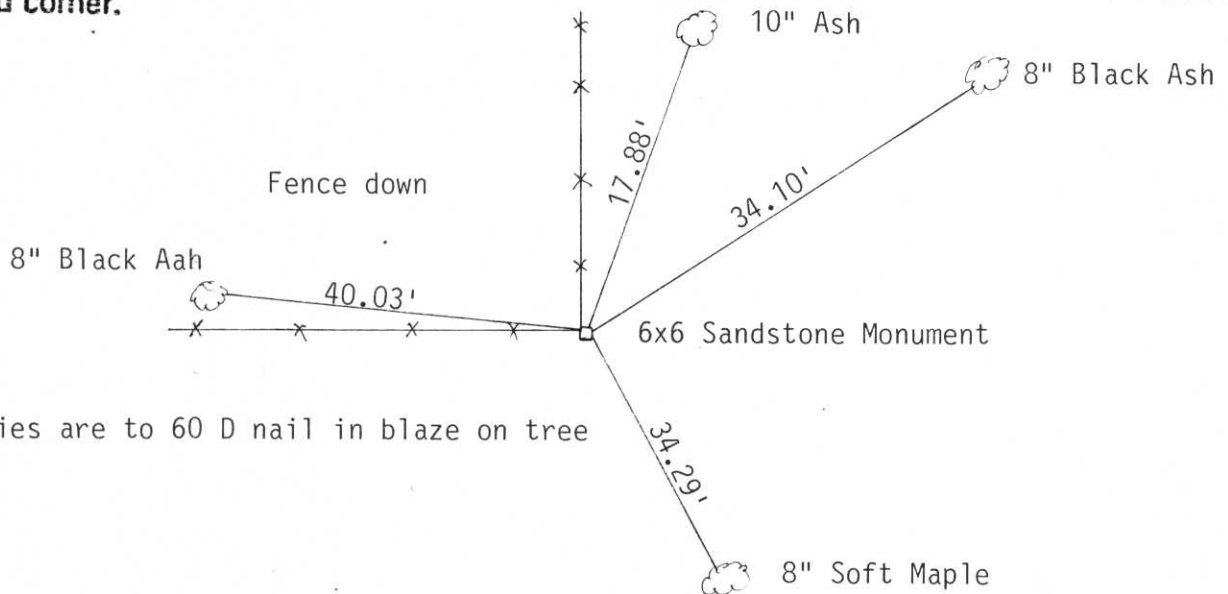


b) (f) (g) (h) Description of monument found at this corner and if it was accepted, state all evidence (material, testimonial, occupational, plats, records, other monuments) used as a basis for accepting. If not accepted or if nothing was found, state evidence used as basis for establishing location. If reestablished through lost corner proportionate methods, indicate all monuments, distances and directions used to establish.

Two Certified Surveys make reference to this corner. Walked into woods, found 6"x6" sandstone monument laying down. top had faint cross on it. Stood monument upright, tied out. This area has flash floods in it. The new fence shown on drawing was all knocked down by water. All ties are to 60 D nails in blazes on trees.

Held stone monument as best evidence of original corner.

c) (d) (e) Plan view of corner with ties to at least 4 witness monuments. If in disagreement with previously established corner, show the distances between the two corners and also indicate the ties to the disputed corner.



All ties are to 60 D nail in blaze on tree

(i) I, David L. Osterbrink RLS No. S-2014

(type or print name) certify that the corner location on this record was determined by me or under my direction and control and that this U.S. Public Land Survey Monument Record is correct and complete to the best of my knowledge and belief.

David L. Osterbrink

Signature

6-1-94

Date



Index No. W-9

RECEIVED AT LINCOLN COUNTY
 COURTHOUSE THIS 3rd DAY
 of June 1994
Art Orube
 TAX DESCRIPTION OFFICE