

CERTIFIED LAND CORNER RESTORATION

Index No. Y-9

State of Wisconsin }
County of Lincoln } ss.

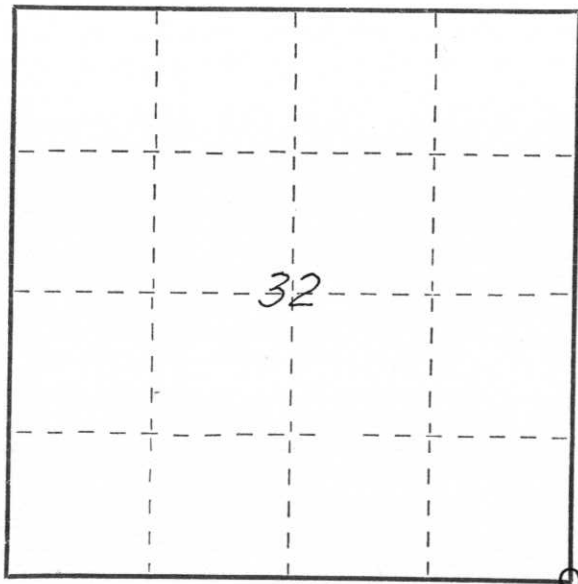
History of original corner establishment:

Set wood post, no original corner ties recovered

I Edwin R. Abendroth, do hereby certify that on the 17th day of March, 1983, I found evidence of the Southeast corner of Section 32 Township 31, North, Range 6 East of the, Fourth, Principal Meridian, as described hereon; and that from this evidence I established a new monument and accessories as described hereon to perpetuate the original location of this corner.

Resident witnesses:

Elmer Lee, Lincoln Co, Hwy. Dept.

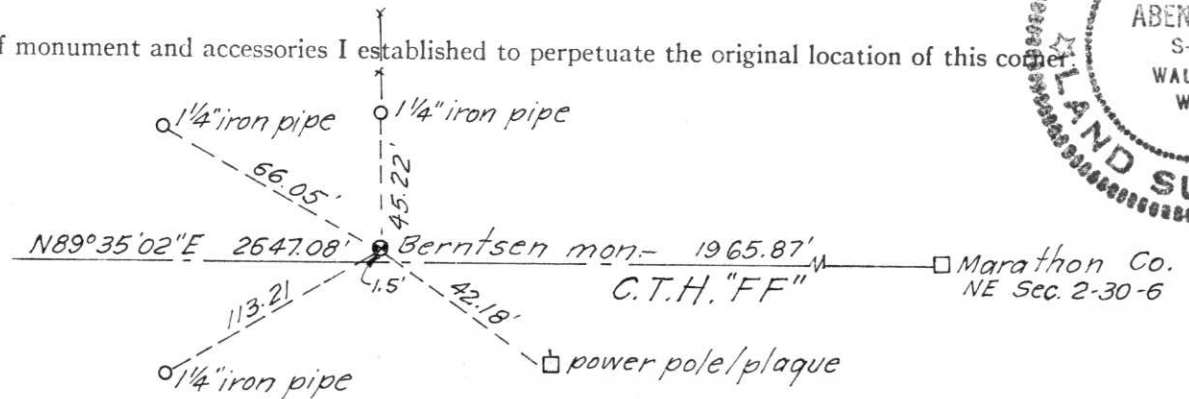


○ = Corner monument restored.

Description of corner evidence found:

Found 8" X 8" sandstone monument 1.5' below road surface, with traces of old wood post. Sandstone monument broken into several pieces bottom 1 1/4" intact and in place. Set Berntsen monument, furnished by Lincoln County in place of stone. Left stone in bottom of excavation

Description of monument and accessories I established to perpetuate the original location of this corner



Dated at Wausau, Wis., this 18th day of March, 1983.

Signature Edwin R. Abendroth Title Reg. Land Surveyor Registration No. S-798
(County Surveyor, Registered Land Surveyor, or other duly authorized official)

Office of Register of Deeds, County of _____, I hereby certify that the within instrument was filed in this office for record on the _____ day of _____, 19____ at _____ o'clock _____ M.

(Register of Deeds)

By _____ Deputy