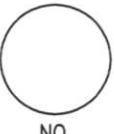


LINCOLN COUNTY U.S. PUBLIC LAND SURVEY MONUMENT LOCATION RECORD

CORNER NUMBER 293164
 SECTION 29
 TOWNSHIP 31 NORTH
 RANGE 6 EAST



LANDMARK BENCHMARK
 CORNER IDENTITY: WEST 1/4 CORNER FOUND SET
 RE-SET RE-TIED

LINCOLN COUNTY COORDINATE: N: _____
 E: _____

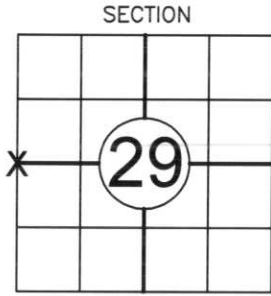
ELEVATION-(FEET): _____ DATUM: _____

WEATHER: PARTLY CLOUDY

DATE OF SURVEY: MAY 4TH, 2007 TEMPERATURE: 65 °F

SURVEY PARTY: NATHAN WINCENTSEN, KEITH WALKOWSKI

SCOTT
 CITY, VILLAGE, TOWN



LOCATION (Indicated By X)



BASIS FOR MONUMENT LOCATION:

(DESCRIBE METHOD OF SURVEY AND CORNER AUTHENTICATION)

EXCAVATED FOR THE WEST 1/4 CORNER AND FOUND STONE MONUMENT ±1' BELOW ROAD SURFACE WITH IRON PIPE ON NORTH SIDE. CORNER IS ±5' NORTH OF EXISTING CENTERLINE. EXISTING TIESHEET HAD CORRECT DESCRIPTION FOR CORNER LOCATION BUT TIE SKETCH WAS MISLABELED AND CORRESPONDED TO THE WEST 1/4 OF SECTION 30. PERPETUATED CORNER LOCATION AS SHOWN BELOW.

FIELD BOOK NO. 13 PAGE NO. 3
 COMPANY RIVERSIDE LAND SURVEYING LLC

CERTIFIED CORRECT:
Keith J. Walkowski
KEITH J. WALKOWSKI
 Registered Land Surveyor
 DATE: 5-24-07

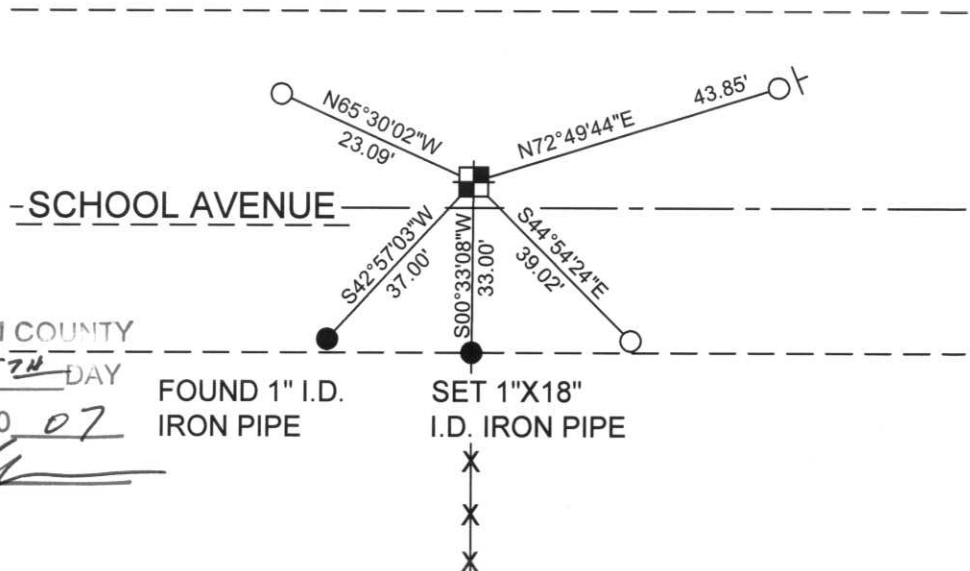
TIE SKETCH:

SHOW MINIMUM OF FOUR (4) HORIZONTAL TIE DISTANCES TO FIXED WITNESS MONUMENTS. DESCRIBE ALL MONUMENTS FOUND OR SET. CORRECT ALL DISTANCES SHOWN TO STANDARD TEMPERATURE OF 68° F.

- FOUND 6"x6" GRANITE STONE MONUMENT
- SET 3/4" REBAR WITH ALUMINUM CAPS
- VINYL SURVEY MARKER POST

NOTE

- BEARINGS ARE REFERENCED TO THE LINCOLN COUNTY COORDINATE SYSTEM
- THIS DRAWING IS NOT TO SCALE



RECEIVED BY LINCOLN COUNTY SURVEYOR THIS 25TH DAY OF May 20 07
Jerry Dobb
 COUNTY SURVEYOR

FOUND 1" I.D. IRON PIPE SET 1"X18" I.D. IRON PIPE

5-5

CERTIFIED LAND CORNER RESTORATION

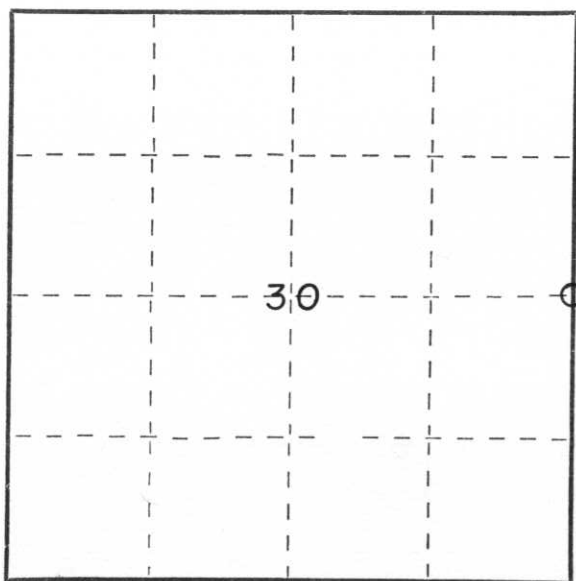
Index No. S-5

State of Wisconsin }
County of Lincoln } ss.

I, LaVerne H. Mosher, do hereby certify that on the 27th day of May, 1983, I found evidence of the East 1/4 corner of Section 30 Township 31 North, Range 6 East, Fourth, Principal Meridian, as described hereon; and that from this evidence I established a new monument and accessories as described hereon to perpetuate the original location of this corner.

Resident witnesses:

Arnold Wyland, Jr.



○ = Corner monument restored.

History of original corner establishment:

Notes of the original government survey indicate wood posts were set at all section and quarter-section corners. Stone monuments subsequently were placed at these corners during remonumentation surveys.

Description of corner evidence found:

Excavated with backhoe. At depth of 10 inches below gravel roadway surface a 6"x6" Red Granite stone monument with cross was recovered upright and intact. Cornerstone is located about 5' North of road centerline. Set a 1"O.D.x30" iron pipe along North face of stone to aid future location.

Description of monument and accessories I established to perpetuate the original location of this corner.

See sketch on reverse.



Dated at Schofield, Wis., this 2nd day of June, 1983.

Signature LaVerne H. Mosher Title Registered Land Surveyor Registration No. S-1188
(County Surveyor, Registered Land Surveyor, or other duly authorized official)

Office of Register of Deeds, County of _____, I hereby certify that the within instrument was filed in this office for record on the _____ day of _____, 19____ at _____ o'clock _____ M.

(Register of Deeds)

By _____ Deputy

RECEIVED AT LINCOLN COUNTY
COURTHOUSE THIS 6 DAY
OF June 1983.
Bob Pringle
TAX DESCRIPTION OFFICE

