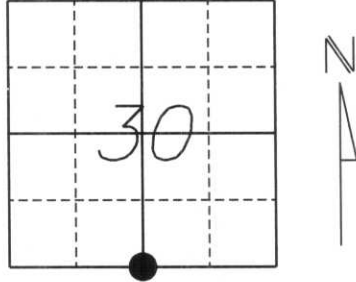


# U.S. PUBLIC LAND SURVEY MONUMENT RECORD

Note: This form is intended and designed to fulfill all requirements of Wisconsin Administrative Code, Chapter A-E 5.02, U.S. Public Land Survey Monument Record (3) (a) (b) (c) (d) (e) (f) (g) (h) (l). An additional sheet may be added if necessary to conform with said requirements.

(a) Corner location: Township 31 North  
 Range 6 East  
 Town/City/Village SCOTT  
 County LINCOLN



Section 30

(b) (f) (g) (h) Description of monument found at this corner and if it was accepted, state all evidence (material, testimonial, occupational, plats, records, other monuments) used as a basis for accepting. If not accepted or if nothing was found, state evidence used as a basis for an establishing location. If reestablished through lost corner proportionate methods, indicate all monuments, distance and directions used to establish.

**History of original corner establishment:**

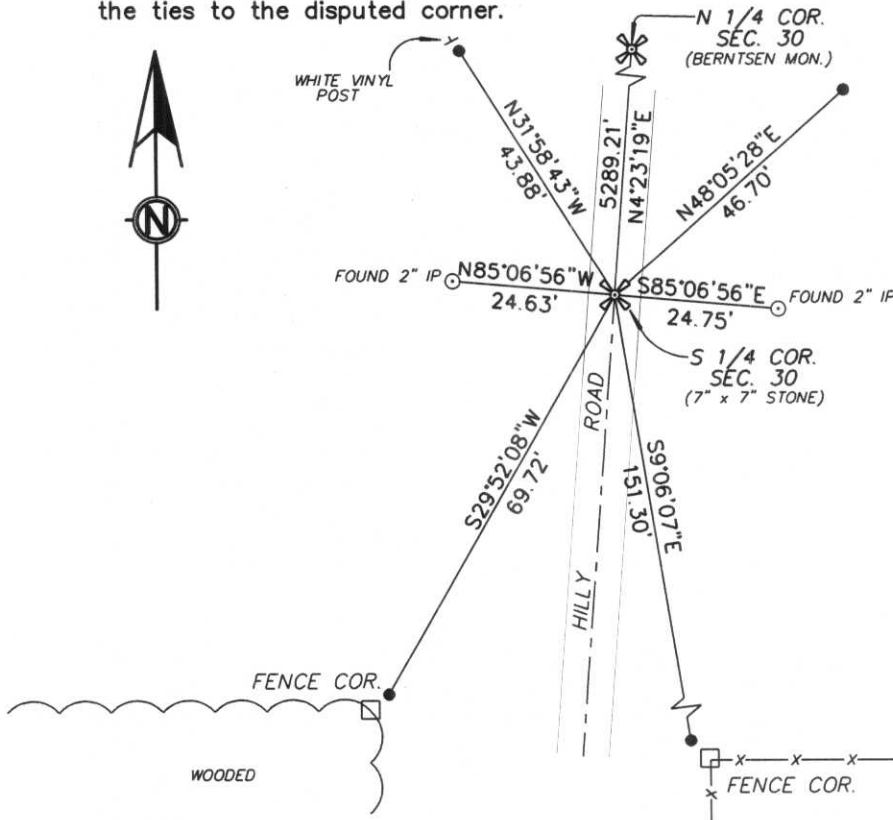
Original Survey was March, 1852 by F.S. Ellis. Original corner was a wooden post with bearing trees:  
 11" Hemlock, N1°W, 31 lks.  
 14" Linn Elm, S35°E, 29 lks.

On July 16th, 1979 Chester J. Nowaczyk located a 8"x8"x36" (6"x6" on map diagram) stone monument and tied to the following witnesses:  
 2" Iron Pipe East 24.75'  
 8" White Pine Southwest 73.55'  
 6" Maple Southwest 91.86'  
 2" Iron Pipe West 24.75'

**Description of corner evidence found:**

Using the two remaining witness monuments, we dug and found a 7"x7" Granite Stone. We accepted this position and placed a 1" Iron Pipe on the North side to aid in location and tied to 7/8" rebar with Lincoln County Caps.

(c) (d) (e) Plan view of corner with ties to at least 4 witness monuments. If in disagreement with previously established corner, show the distances between the two corners and also indicate the ties to the disputed corner.



NOTE: Drawing not to scale

- All ties are to 7/8" Rebar with Lincoln County Caps approximately 2 feet from witness monuments.



William W. Nutter RLS, S-2299

(type or print name) certify that the corner location on this record was determined by me or under my direction and control and that this U.S. Public Land Survey Monument Record is correct and complete to the best of my knowledge and belief.

*William W. Nutter*

3-10-2004

Index No.

4-3

Signature  
 (revised 2/97)

Date

CERTIFIED LAND CORNER RESTORATION

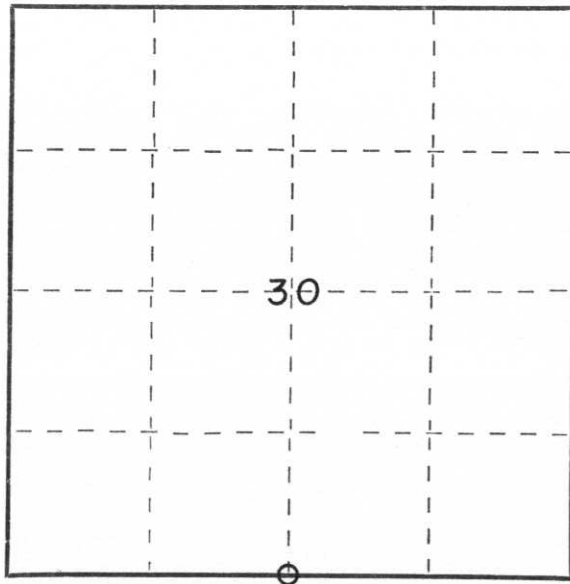
Index No. U-3

State of Wisconsin }  
County of Lincoln } ss.

I LaVerne H. Mosher, do hereby certify that on the 27th day of May, 1983, I found evidence of the South 1/4 corner of Section 30 Township 31, North, Range 6 East, Fourth, Principal Meridian, as described hereon; and that from this evidence I established a new monument and accessories as described hereon to perpetuate the original location of this corner.

Resident witnesses:

Arnold Wyland, Jr.  
\_\_\_\_\_  
\_\_\_\_\_



○ = Corner monument restored.

History of original corner establishment:

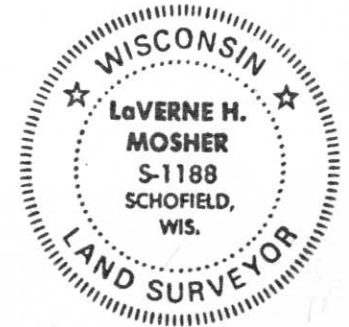
Notes of the original government survey indicate wood posts were set at all section and quarter-section corners. Stone monuments subsequently were placed at these corners during remonumentation surveys.

Description of corner evidence found:

Excavated with backhoe. At depth of 1.3 feet below gravel roadway surface a 6"x6"x30" Limestone monument was recovered in upright fashion. Top of monument had been broken off by road machinery. A 1"x24" iron pipe had been placed along West face of stone. Stone was tied out in place and a new chisel "X" was cut into center top of stone. Monument was removed and reset in original location such that top is now 5 inches below roadway surface. Reset the 1"x24" iron pipe along North side of stone.

Description of monument and accessories I established to perpetuate the original location of this corner.

See sketch on reverse.



Dated at Schofield, Wis., this 2nd day of June, 1983.

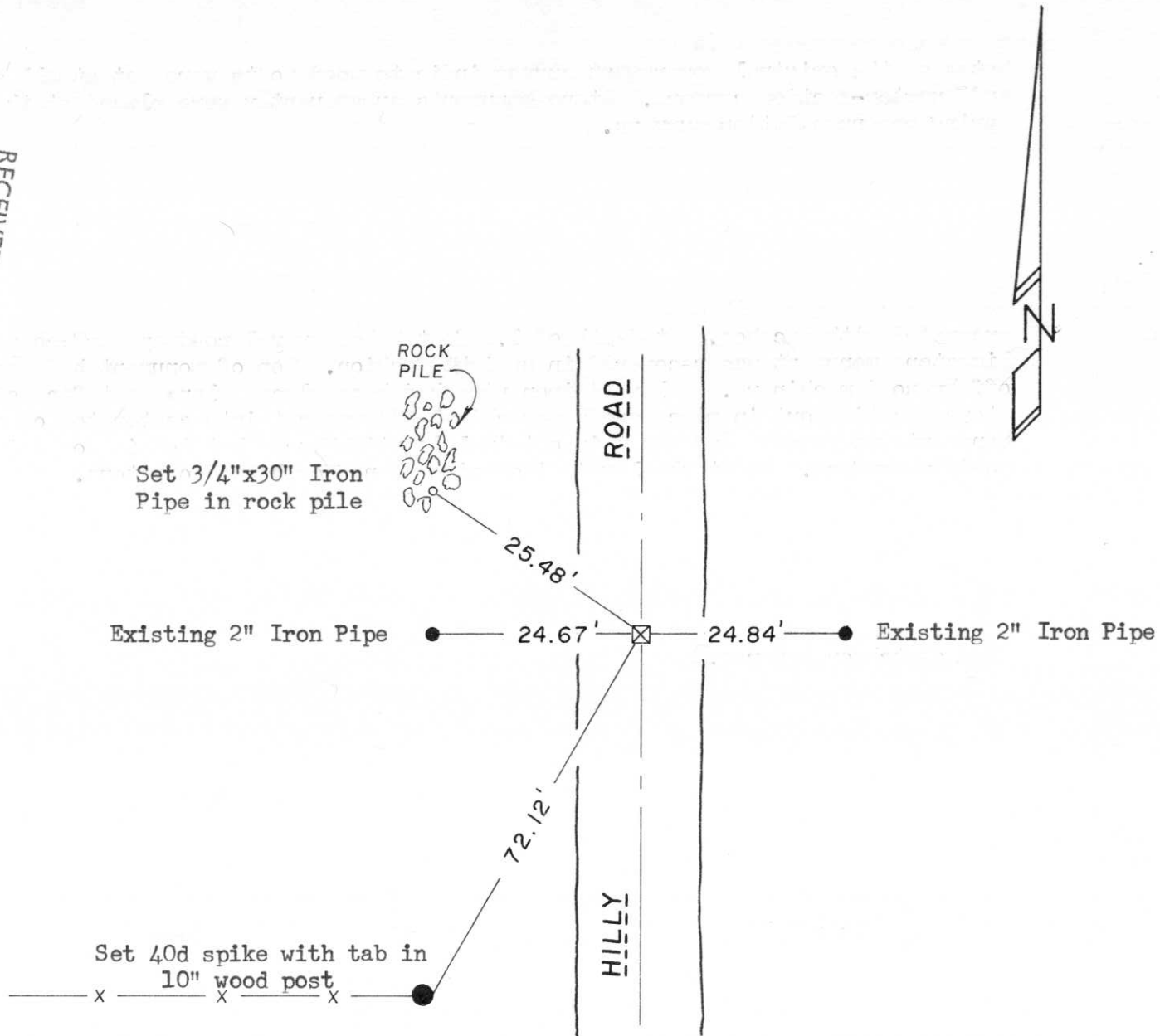
Signature LaVerne H. Mosher Title Registered Land Surveyor Registration No. S-1188  
(County Surveyor, Registered Land Surveyor, or other duly authorized official)

Office of Register of Deeds, County of \_\_\_\_\_, I hereby certify that the within instrument was filed in this office for record on the \_\_\_\_\_ day of \_\_\_\_\_, 19\_\_\_\_ at \_\_\_\_\_ o'clock \_\_\_\_\_ M.

\_\_\_\_\_  
(Register of Deeds)

By \_\_\_\_\_ Deputy

RECEIVED AT LINCOLN COUNTY  
COURTHOUSE THIS 6 DAY  
OF June 19 83.  
TAX DESCRIPTION OFFICE  
*Pat Brinkley*



CERTIFIED LAND CORNER RESTORATION

Index No. U-3

State of Wisconsin }  
 County of LINCOLN } ss.

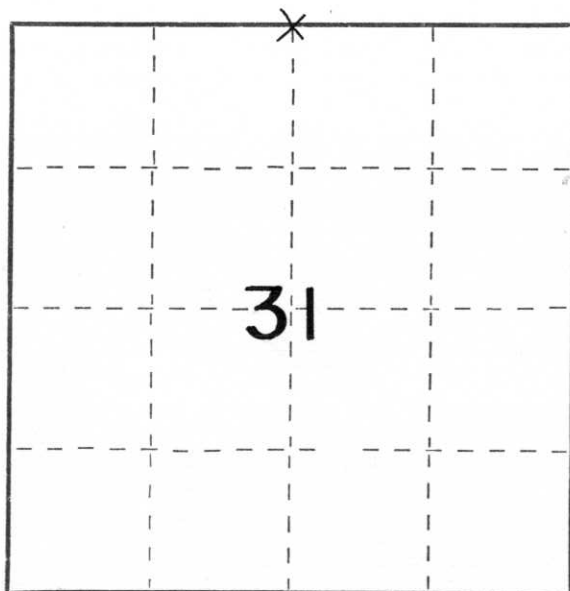
I CHESTER J. NOWACZYK, do hereby certify that on the 16TH day of JULY, 1979, I found evidence of the NORTH 1/4 corner of SECTION 31 Township 31, North, Range 6 EAST, Fourth, Principal Meridian, as described hereon; and that from this evidence I established a new monument and accessories as described hereon to perpetuate the original location of this corner.

Resident witnesses:

.....

.....

.....

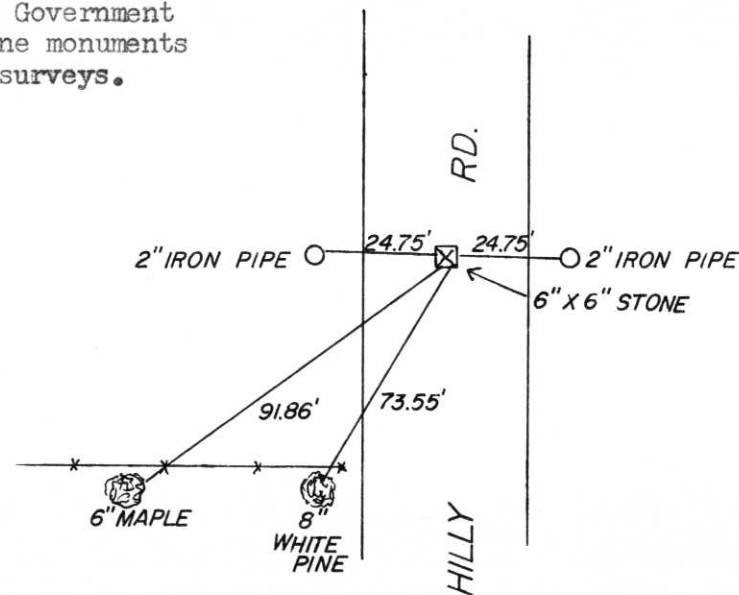


○ = Corner monument restored.

History of original corner establishment:

Wood posts were originally set by the Government Surveyors and later replaced with stone monuments 8" X 8" X 36" during remonumentation surveys.

Description of corner evidence found:



Description of monument and accessories I established to perpetuate the original location of this corner.

Dated at....., Wis., this.....day of....., 19.....

Signature..... Title..... Registration No.....  
 (County Surveyor, Registered Land Surveyor, or other duly authorized official)

Office of Register of Deeds, County of....., I hereby certify that the within instrument was filed in this office for record on the.....day of....., 19..... at.....o'clock..... M.

.....  
 (Register of Deeds)

By.....Deputy