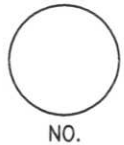


# LINCOLN COUNTY U.S. PUBLIC LAND SURVEY MONUMENT LOCATION RECORD

CORNER NUMBER 293165  
 SECTION 29  
 TOWNSHIP 31 NORTH  
 RANGE 6 EAST  
 SCOTT  
 CITY, VILLAGE, TOWN



LANDMARK       BENCHMARK \_\_\_\_\_      FOUND   
 CORNER IDENTITY: \_\_\_\_\_ EAST 1/4 CORNER      SET   
 RESET   
 RE-TIED

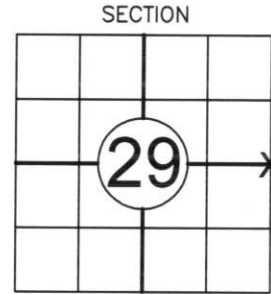
LINCOLN COUNTY COORDINATE: N: \_\_\_\_\_  
 E: \_\_\_\_\_

ELEVATION—(FEET): \_\_\_\_\_ DATUM: \_\_\_\_\_

WEATHER: PARTLY CLOUDY

DATE OF SURVEY: MAY 4TH, 2007 TEMPERATURE: 65 °F

SURVEY PARTY: NATHAN WINCENTSEN, KEITH WALKOWSKI



LOCATION  
(Indicated By X)



## BASIS FOR MONUMENT LOCATION:

(DESCRIBE METHOD OF SURVEY AND CORNER AUTHENTICATION)

EXCAVATED FOR THE EAST 1/4 CORNER TO A DEPTH OF 3 FEET BY HAND FOR STONE MONUMENT CALLED FOR ON PREVIOUS TIESHEET. NO EVIDENCE OF THE STONE MONUMENT COULD BE FOUND. SET BERNSTEN MONUMENT USING EXISTING TIES AND VERIFIED LOCATION USING DISTANCES TO ADJOINING SECTION CORNERS. PERPETUATED CORNER LOCATION AS SHOWN BELOW.

FIELD BOOK NO. 13 PAGE NO. 3  
 COMPANY RIVERSIDE LAND SURVEYING LLC

CERTIFIED CORRECT:  
*Keith J. Walkowski*  
KEITH J. WALKOWSKI  
 Registered Land Surveyor  
 DATE: 5-24-07

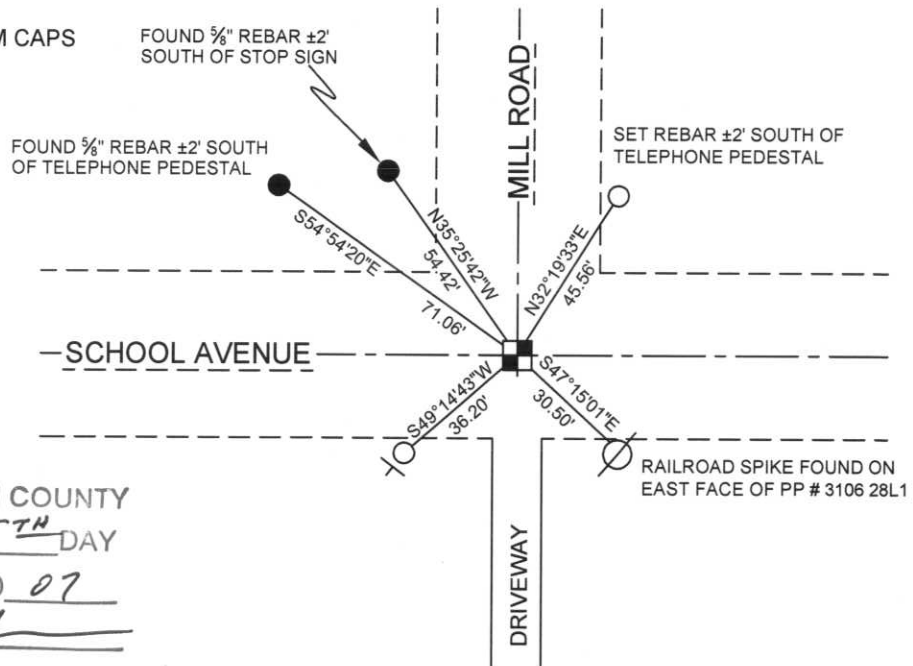
## TIE SKETCH:

SHOW MINIMUM OF FOUR (4) HORIZONTAL TIE DISTANCES TO FIXED WITNESS MONUMENTS. DESCRIBE ALL MONUMENTS FOUND OR SET. CORRECT ALL DISTANCES SHOWN TO STANDARD TEMPERATURE OF 68° F.

- SET BERNSTEN MONUMENT
- SET 3/4" REBAR WITH ALUMINUM CAPS
- VINYL SURVEY MARKER POST

### NOTE

- BEARINGS ARE REFERENCED TO THE LINCOLN COUNTY COORDINATE SYSTEM
- THIS DRAWING IS NOT TO SCALE



RECEIVED BY LINCOLN COUNTY SURVEYOR THIS 25<sup>TH</sup> DAY OF May 20 07  
*Tony Dalk*  
 COUNTY SURVEYOR

5-9

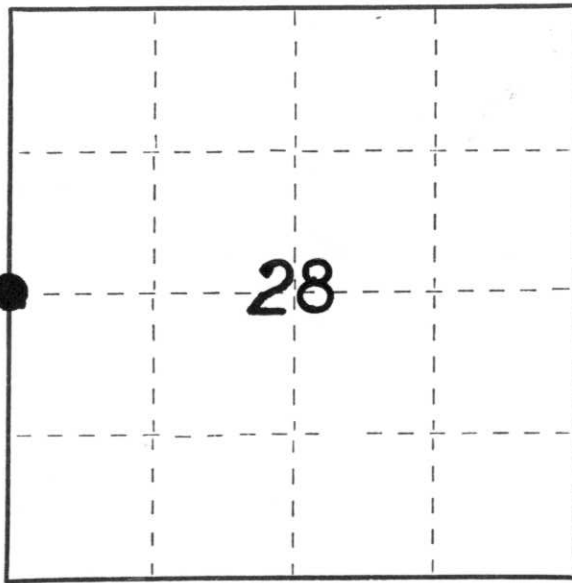
CERTIFIED LAND CORNER RESTORATION

Index No. S-9

State of Wisconsin }  
County of LINCOLN } ss.

I DAVID W. LEMKE, do hereby certify that on the 10 day of MAY, 1988, I found evidence of the W 1/4 corner of SEC. 28 Township 31, North, Range 6E, Fourth Principal Meridian, as described hereon; and that from this evidence I established a new monument and accessories as described hereon to perpetuate the original location of this corner.

Resident witnesses:



○ = Corner monument restored.

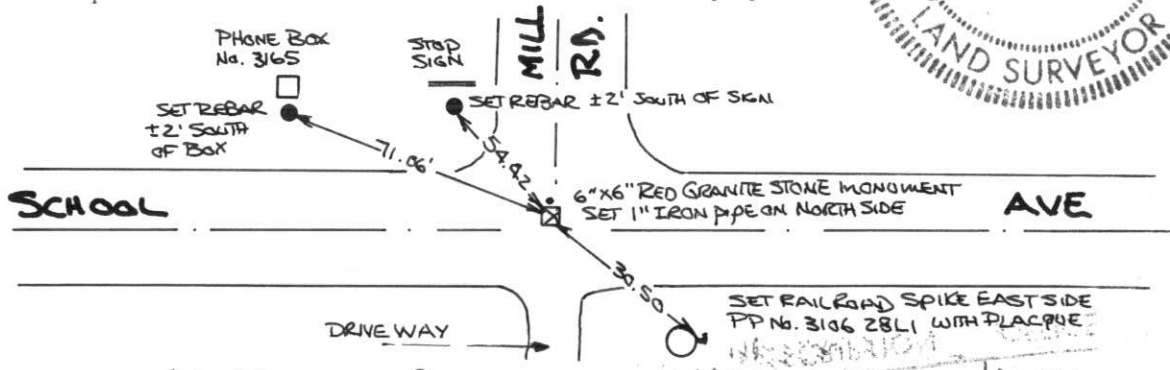
History of original corner establishment:

CORNER WAS SET BY L. KLEINSCHMIDT & HERMAN RUSH, SURVEYORS, IN A SURVEY FOR THE TOWN OF SCOTT. DATED JUNE 20, 1903

Description of corner evidence found:

DUG WITH A BACK HOE FOUND 6" X 6" RED GRANITE STONE 1' BELOW ROAD SURFACE

Description of monument and accessories I established to perpetuate the original location of this corner.



North

Dated at MERRILL, Wis., this 11 day of MAY, 1988.

Signature David W. Lemke Title SURVEYOR Registration No. S-1845  
(County Surveyor, Registered Land Surveyor, or other duly authorized official)

Office of Register of Deeds, County of LINCOLN hereby certify that the within instrument was filed in this office for record on the 11 day of MAY, 1988 at 11 o'clock AM.

(Register of Deeds)

By \_\_\_\_\_ Deputy

Stock No. 26272

H.C. Miller Company

FORM 985