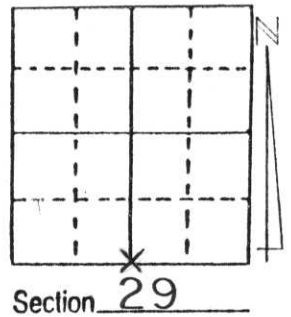


U.S. PUBLIC LAND SURVEY MONUMENT RECORD

Note: This form is intended and designed to fulfill all requirements of Wisconsin Administrative Code, Chapter A-E 5.02, U.S. Public Land Survey Monument Record (3) (a) (b) (c) (d) (e) (f) (g) (h) (i). An additional sheet may be added if necessary to conform with said requirements.

(a) Corner location: Township 31 North
 Range 6 East
 Town/City/Village SCOTT
 County LINCOLN

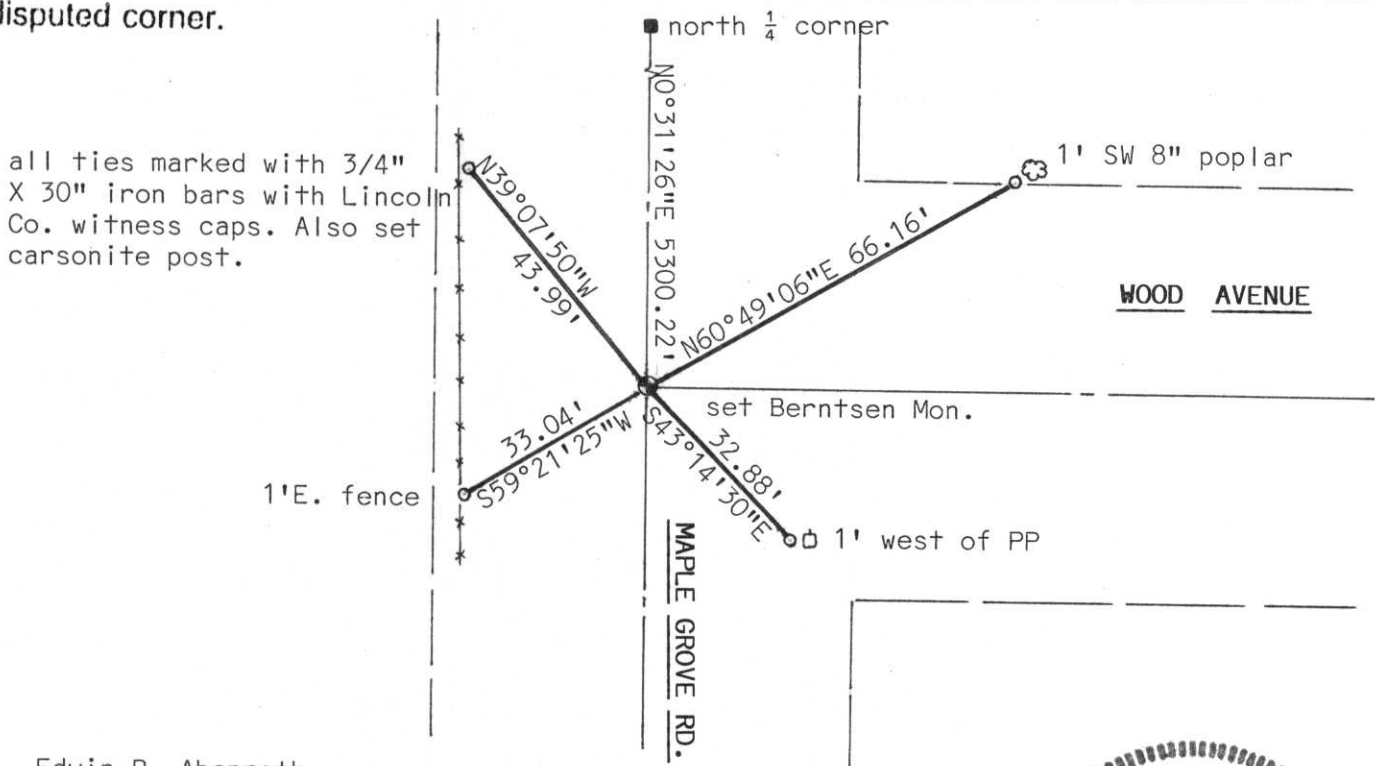


(b) (f) (g) (h) Description of monument found at this corner and if it was accepted, state all evidence (material, testimonial, occupational, plats, records, other monuments) used as a basis for accepting. If not accepted or if nothing was found, state evidence used as basis for establishing location. If reestablished through lost corner proportionate methods, indicate all monuments, distances and directions used to establish.

Corner established by Gov't. survey 1903. A red granite stone was set at this time. We dug in a gravel roadbed to a depth of 4 feet to sub-grade. We did not find any evidence of corner. Lincoln County Highway Dept. did the digging. We set a Bentsen monument 1' below road surface on fence line to west and centerline of Maple Grove Road. As best existing evidence. Included into Section Summary. The distances fit the summary.

**RECEIVED AT LINCOLN COUNTY
 COURTHOUSE THIS 9th DAY
 OF July 19 98
Pat Prube
TAX DESCRIPTION OFFICE**

(c) (d) (e) Plan view of corner with ties to at least 4 witness monuments. If in disagreement with previously established corner, show the distances between the two corners and also indicate the ties to the disputed corner.



(i) I, Edwin R. Abenroth
 (type or print name) certify that the corner location on this record was determined by me or under my direction and control and that this U.S. Public Land Survey Monument Record is correct and complete to the best of my knowledge and belief.

Edwin R. Abenroth June 8, 1998
 Signature Date



Index No. 0-7