

CERTIFIED LAND CORNER RESTORATION

Index No. U-11

State of Wisconsin }
County of Lincoln } ss.

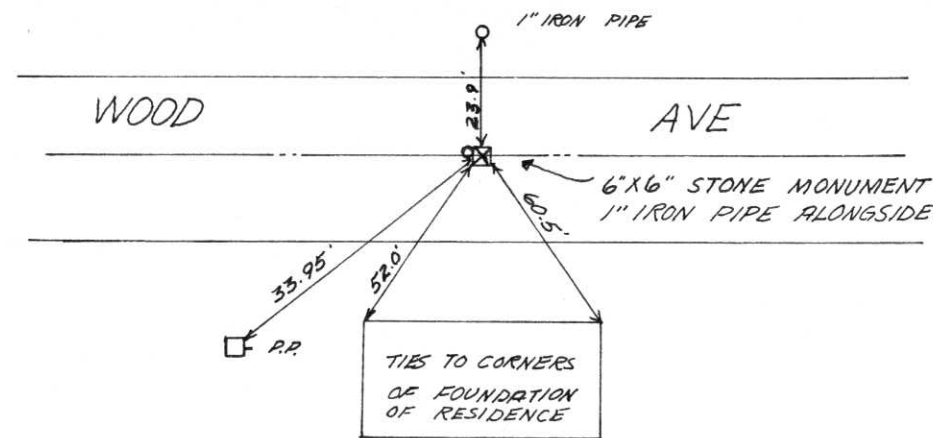
History of original corner establishment:

I Chester J. Nowaczyk do hereby certify that on the 7th day of June, 1979, I found evidence of the N/4 corner of Section 33 Township 31, North, Range 76, Fourth, Principal Meridian, as described hereon; and that from this evidence I established a new monument and accessories as described hereon to perpetuate the original location of this corner.

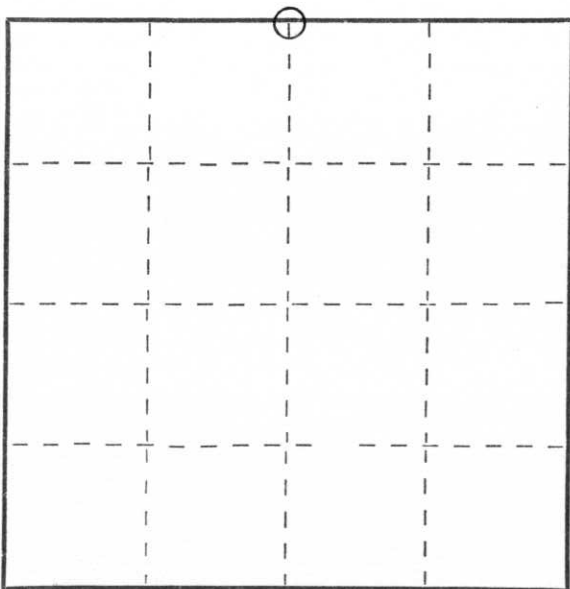
Resident witnesses:

.....
.....
.....

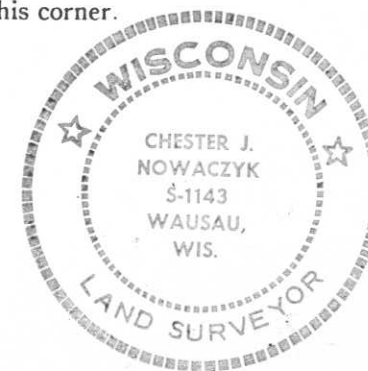
Description of corner evidence found:
Dug with backhoe, found 6" x 6" granite monument



Description of monument and accessories I established to perpetuate the original location of this corner.



○ = Corner monument restored.



Dated at, Wis., this 7th day of June, 1979.

Signature Chester J. Nowaczyk Title Surveyor Registration No. 5-1143
(County Surveyor, Registered Land Surveyor, or other duly authorized official)

Office of Register of Deeds, County of, I hereby certify that the within instrument was filed in this office for record on the day of, 19..... at o'clock M.

.....
(Register of Deeds)

By Deputy