

U.S. PUBLIC LAND SURVEY MONUMENT RECORD

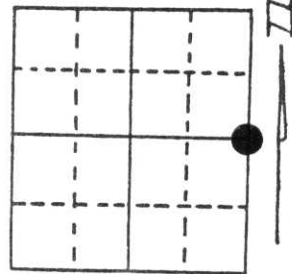
Note: This form is intended and designed to fulfill all requirements of Wisconsin Administrative Code, Chapter A-E 5.02, U.S. Public Land Survey Monument Record (3) (a) (b) (c) (d) (e) (f) (g) (h) (i). An additional sheet may be added if necessary to conform with said requirements.

(a) Corner location: Township 31 North

Range 6 East

Town/City/Village TN SCOTT

County LINCOLN



Section 27

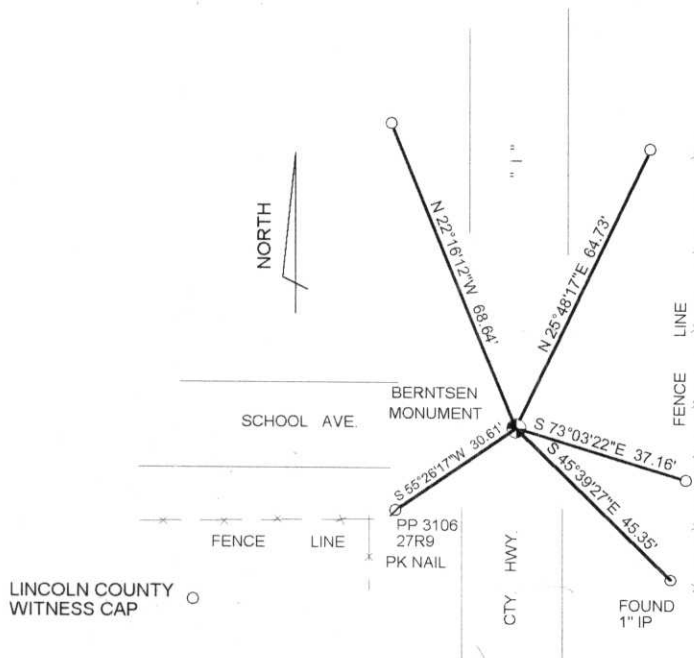
(b) (f) (g) (h) Description of monument found at this corner and if it was accepted, state all evidence (material, testimonial, occupational, plats, records, other monuments) used as a basis for accepting. If not accepted or if nothing was found, state evidence used as basis for establishing location. If reestablished through lost corner proportionate methods, indicate all monuments, distances and directions used to establish.

NOVEMBER 1985 SHERIDAN SCHWARK FOUND A 6"x6" GRANITE STONE PRESUMED SET BY LOUIS KLINE-SCHMIDT IN 1902. SHERIDAN RESET THE CORNER WITH A BERNTSEN MONUMENT AND ESTABLISHED 4 TIES.

I FOUND THE BERNTSEN AND TWO OF SHERIDAN'S TIES.

RECEIVED AT LINCOLN COUNTY
COURTHOUSE THIS 20th DAY
OF June 19 96
Pat Priebe
TAX DESCRIPTION OFFICE

(c) (d) (e) Plan view of corner with ties to at least 4 witness monuments. If in disagreement with previously established corner, show the distances between the two corners and also indicate the ties to the disputed corner.



N 65° 26' 55" E 5850.46'
TO WIDOT GPS
STATION 3106 E25S

(i) I, DAVID L. LEMKE

(type or print name) certify that the corner location on this record was determined by me or under my direction and control and that this U.S. Public Land Survey Monument Record is correct and complete to the best of my knowledge and belief.

Signature

JUN. 18 1996

Date



Index No. S-17

U.S. PUBLIC LAND SURVEY MONUMENT RECORD

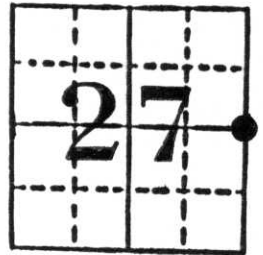
Note: This form is intended and designed to fulfill all requirements of Wisconsin Administrative Code, Chapter A-E 5.02, U.S. Public Land Survey Monument Record (3) (a) (b) (c) (d) (e) (f) (g) (h) (i). An additional sheet may be added if necessary to conform with said requirements.

(a) Corner location: Township 31 North

Range 6 East

Town Scott

County Lincoln

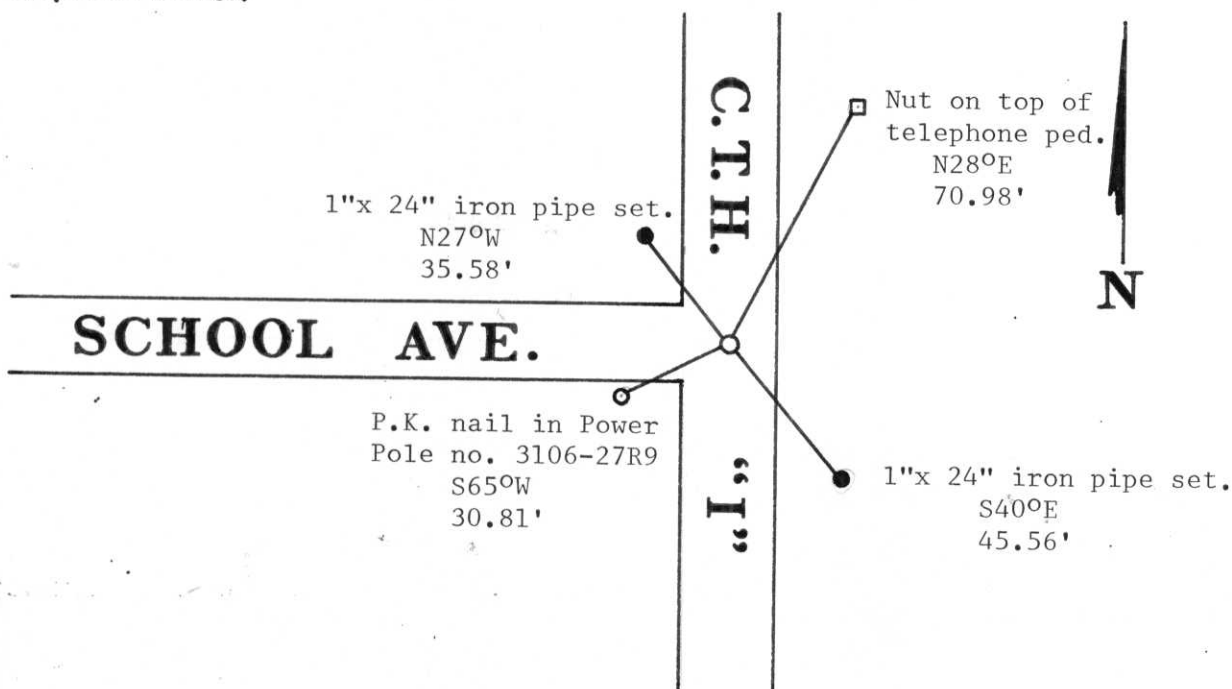


Section 27

b) (f) (g) (h) Description of monument found at this corner and if it was accepted, state all evidence (material, testimonial, occupational, plats, records, other monuments) used as a basis for accepting. If not accepted or if nothing was found, state evidence used as basis for establishing location. If reestablished through lost corner proportionate methods, indicate all monuments, distances and directions used to establish.

We dug the intersection on 11/11/1985 and found a 6" x 6" granite monument which we assumed was set during the resurvey of the Town of Scott by Louis Kleinschmidt. We removed the granite and established the references shown below. Since the Lincoln County Highway Department wanted to patch the road before we reset a Lincoln County Berntsen Monument we waited until 4/2/1986 to do so.

c) (d) (e) Plan view of corner with ties to at least 4 witness monuments. If in disagreement with previously established corner, show the distances between the two corners and also indicate the ties to the disputed corner.



(i) I, Sheridan D. Schwark, Registered Land Surveyor No. S-1205 (type or print name) certify that the corner location on this record was determined by me or under my direction and control and that this U.S. Public Land Survey Monument Record is correct and complete to the best of my knowledge and belief.

Sheridan D. Schwark April 2, 1986
Signature Date



Index No. S-17