

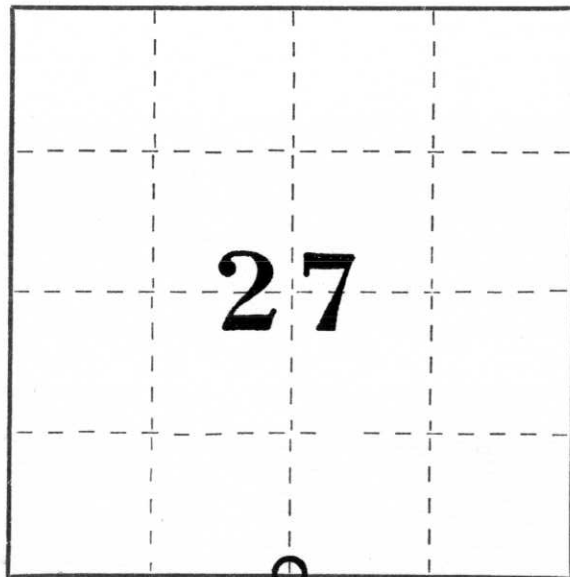
CERTIFIED LAND CORNER RESTORATION

Index No. U-15

State of Wisconsin }  
County of Lincoln } ss.

I, Sheridan D. Schwark, do hereby certify that on the 10th day of April, 1979, I found evidence of the South one-quarter corner of Section 27 Township 31, North, Range 6 East, Fourth, Principal Meridian, as described hereon; and that from this evidence I established a new monument and accessories as described hereon to perpetuate the original location of this corner.

Resident witnesses:



○ = Corner monument restored.

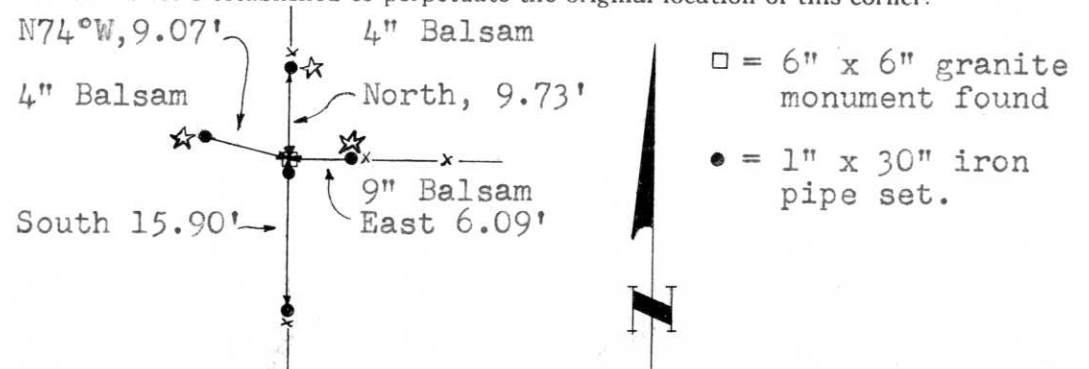
History of original corner establishment:

Date: March, 1852  
Surveyor: A.G. & F.S. Ellis  
Monument set: Wood post  
Bearing Trees: 12" Birch, S51W, 16 links  
10" Hemlock, (bearing and distance not clear)

Description of corner evidence found:

We found a 6" X 6" granite monument at the fence intersection, 1' above grade. The stone was the same type as we've found in other areas in the Town of Scott. The stones were set in 1903 by Louis Kleinschmidt. His map is on record in the Register of Deeds office.

Description of monument and accessories I established to perpetuate the original location of this corner.



Dated at WAUSAU, Wis., this 19<sup>TH</sup> day of APRIL, 19 79.

Signature Sheridan D. Schwark Title Registered Land Surveyor Registration No. S-1205  
(County Surveyor, Registered Land Surveyor, or other duly authorized official)

Office of Register of Deeds, County of \_\_\_\_\_, I hereby certify that the within instrument was filed in this office for record on the \_\_\_\_\_ day of \_\_\_\_\_, 19 \_\_\_\_\_ at \_\_\_\_\_ o'clock \_\_\_\_\_ M.

(Register of Deeds)

By \_\_\_\_\_ Deputy