

U.S. PUBLIC LAND SURVEY MONUMENT RECORD

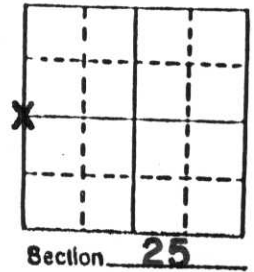
Note: This form is intended and designed to fulfill all requirements of Wisconsin Administrative Code, Chapter A-E 5.02, U.S. Public Land Survey Monument Record (3) (a) (b) (c) (d) (e) (f) (g) (h) (i). An additional sheet may be added if necessary to conform with said requirements.

(a) Corner location: Township 31 North

Range 6 East

Town SCOTT

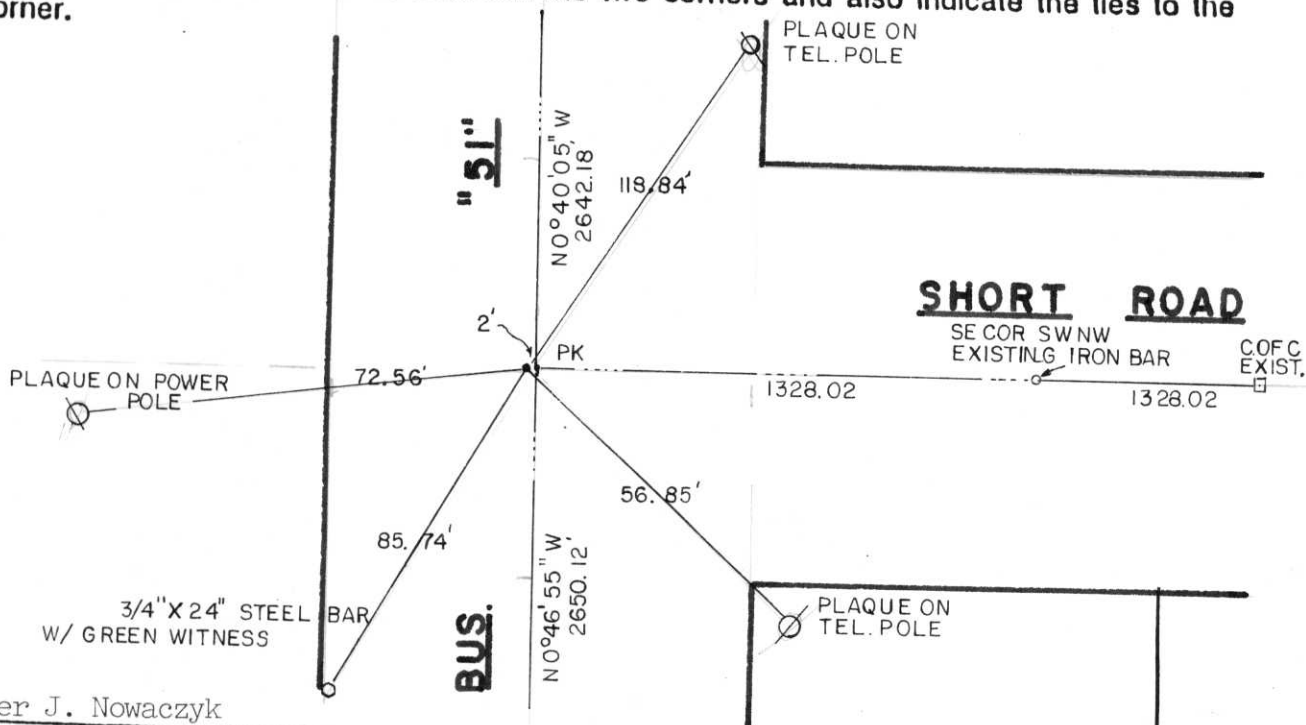
County LINCOLN



b) (f) (g) (h) Description of monument found at this corner and if it was accepted, state all evidence (material, testimonial, occupational, plats, records, other monuments) used as a basis for accepting. If not accepted or if nothing was found, state evidence used as basis for establishing location. If reestablished through lost corner proportionate methods, indicate all monuments, distances and directions used to establish.

Did not dig for corner because existing concrete pavement. Found existing Center of Section and existing SE corner of the SW $\frac{1}{4}$ of the NW $\frac{1}{4}$; extended line from Center of Section through said SE corner of forty at a doubled over distance and set the W $\frac{1}{4}$ corner. This location fit Bus. Hwy "51" stationing plans and County Remonumentation Plans very well. Set and witnessed out PK nail.

c) (d) (e) Plan view of corner with ties to at least 4 witness monuments. If in disagreement with previously established corner, show the distances between the two corners and also indicate the ties to the disputed corner.



(i) I, Chester J. Nowaczyk

(type or print name) certify that the corner location on this record was determined by me or under my direction and control and that this U.S. Public Land Survey Monument Record is correct and complete to the best of my knowledge and belief.

Chester J. Nowaczyk
Signature

Date



Index No. S-21