

# U.S. PUBLIC LAND SURVEY MONUMENT RECORD

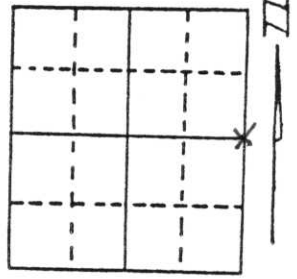
Note: This form is intended and designed to fulfill all requirements of Wisconsin Administrative Code, Chapter A-E 5.02, U.S. Public Land Survey Monument Record (3) (a) (b) (c) (d) (e) (f) (g) (h) (i). An additional sheet may be added if necessary to conform with said requirements.

(a) Corner location: Township 31 North

Range 6 East

Town/City/Village SCOTT

County LINCOLN



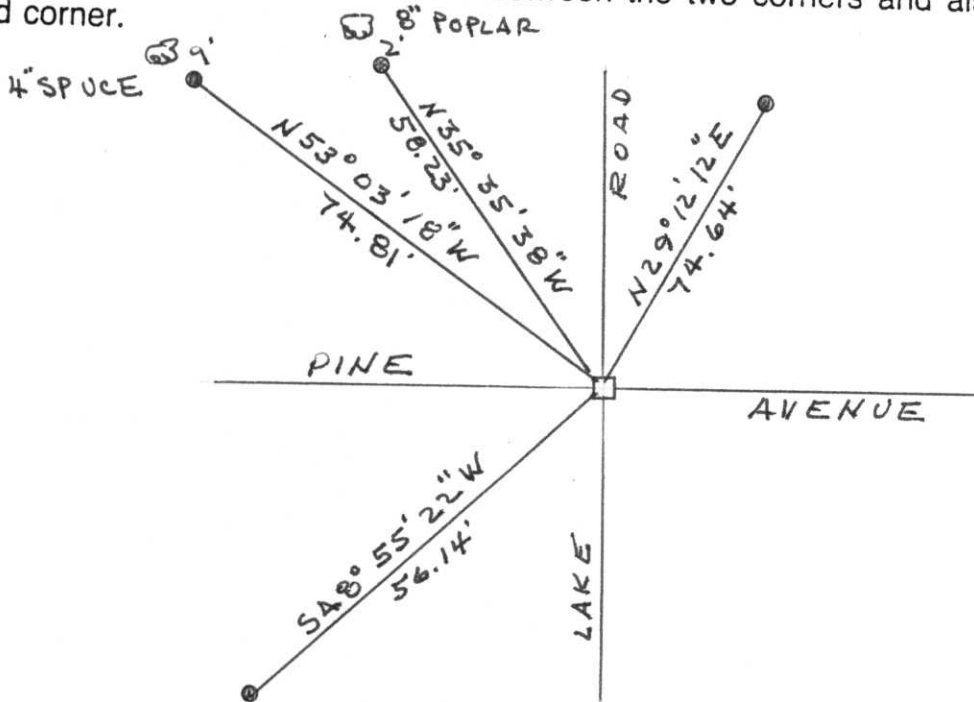
Section 24

(b) (f) (g) (h) Description of monument found at this corner and if it was accepted, state all evidence (material, testimonial, occupational, plats, records, other monuments) used as a basis for accepting. If not accepted or if nothing was found, state evidence used as basis for establishing location. If reestablished through lost corner proportionate methods, indicate all monuments, distances and directions used to establish.

6-18-98

Found square cut granite monument 20 inches below surface, with 1 inch pin on north side.

(c) (d) (e) Plan view of corner with ties to at least 4 witness monuments. If in disagreement with previously established corner, show the distances between the two corners and also indicate the ties to the disputed corner.



•  $\frac{7}{8}$ " x 24" IRON PIN

RECEIVED AT LINCOLN COUNTY  
 COURTHOUSE THIS 28th DAY  
 OF Jan 19 99  
*Pat Miller*  
 AND INFORMATION OFFICE

(i) I, Robert K. Fergot

(type or print name) certify that the corner location on this record was determined by me or under my direction and control and that this U.S. Public Land Survey Monument Record is correct and complete to the best of my knowledge and belief.

Robert K. Fergot

Jan 25, 1999

Signature

Date



Index No. 0-25

CERTIFIED LAND CORNER RESTORATION

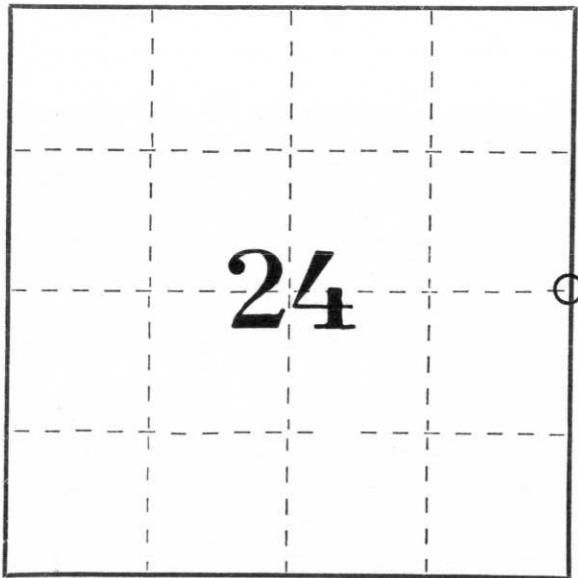
Index No. 0-25

State of Wisconsin }  
County of Lincoln } ss.

I Alan C. Drum, do hereby certify that on the Sixth day of August, 1981, I found evidence of the East 1/4 corner of Section 24 Township 31, North, Range 6E, Fourth, Principal Meridian, as described hereon; and that from this evidence I established a new monument and accessories as described hereon to perpetuate the original location of this corner.

Resident witnesses:

.....  
.....  
.....



○ = Corner monument restored.

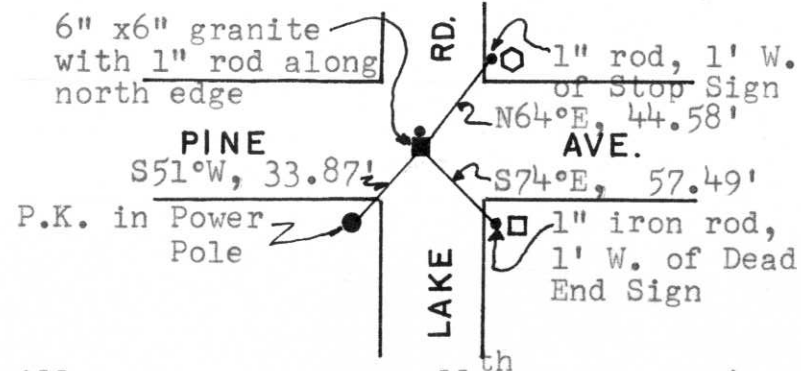
History of original corner establishment:

Wood stake set by original government surveyor

Description of corner evidence found:

Found 6" x 6" granite stone down 13", 1.5' west and 1.5' south of c/l - c/l intersection of Pine Ave. & Lake Rd. Set 1" iron rod along north edge of stone & re-covered with road materials. Set witness markers.

Description of monument and accessories I established to perpetuate the original location of this corner.



Dated at Merrill, Wis., this 11 day of August, 1981

Signature Alan C. Drum Title R.L.S. Registration No. S-1456  
(County Surveyor, Registered Land Surveyor, or other duly authorized official)

Office of Register of Deeds, County of Lincoln, I hereby certify that the within instrument was filed in this office for record on the \_\_\_\_\_ day of \_\_\_\_\_, 19\_\_\_\_ at \_\_\_\_\_ o'clock \_\_\_\_\_ M.

(Register of Deeds)

By \_\_\_\_\_ Deputy