

LINCOLN COUNTY U.S. PUBLIC LAND SURVEY MONUMENT LOCATION RECORD

SECTION 23
TOWNSHIP 31 N
RANGE 6 E

0-19
NO.

LANDMARK BENCHMARK _____
CORNER IDENTITY: BERNTSEN ALUMINUM MONUMENT
FOUND
SET
RESET
RE-TIED

SCOTT

CITY, VILLAGE, TOWN

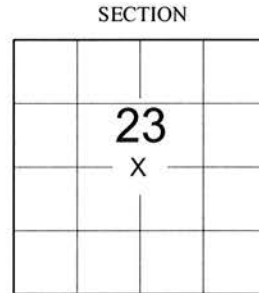
LINCOLN COUNTY COORDINATE: N: 113658.587
E: 388698.085

ELEVATION-(FEET): _____ DATUM: 83 (2011)

WEATHER: P. CLOUDY

DATE OF SURVEY: 10/08/2019 TEMPERATURE: 50 °F

SURVEY PARTY: KEITH WALKOWSKI AND AUSTIN PELOT



LOCATION
(INDICATED BY X)



BASIS FOR MONUMENT LOCATION:

(DESCRIBE METHOD OF SURVEY AND CORNER AUTHENTICATION)

SEARCHED FOR THE CENTER CORNER OF SECTION 23 AND TIES. TIES WERE HEAVED OUT OF THE GROUND AND MOSTLY SIDWAYS. USED DIMENSIONS SHOWN ON THE CTH "Q" RIGHT OF WAY PLAT TO REPOSITION THE CORNER. SET A BERNTSEN ALUMINUM MONUMENT AT THE CORNER ALONG WITH 4 NEW TIES TO PERPETUATE THE CORNER LOCATION AS SHOWN BELOW.

CERTIFIED CORRECT:

Keith J. Walkowski

KEITH J. WALKOWSKI S-2717
Professional Land Surveyor

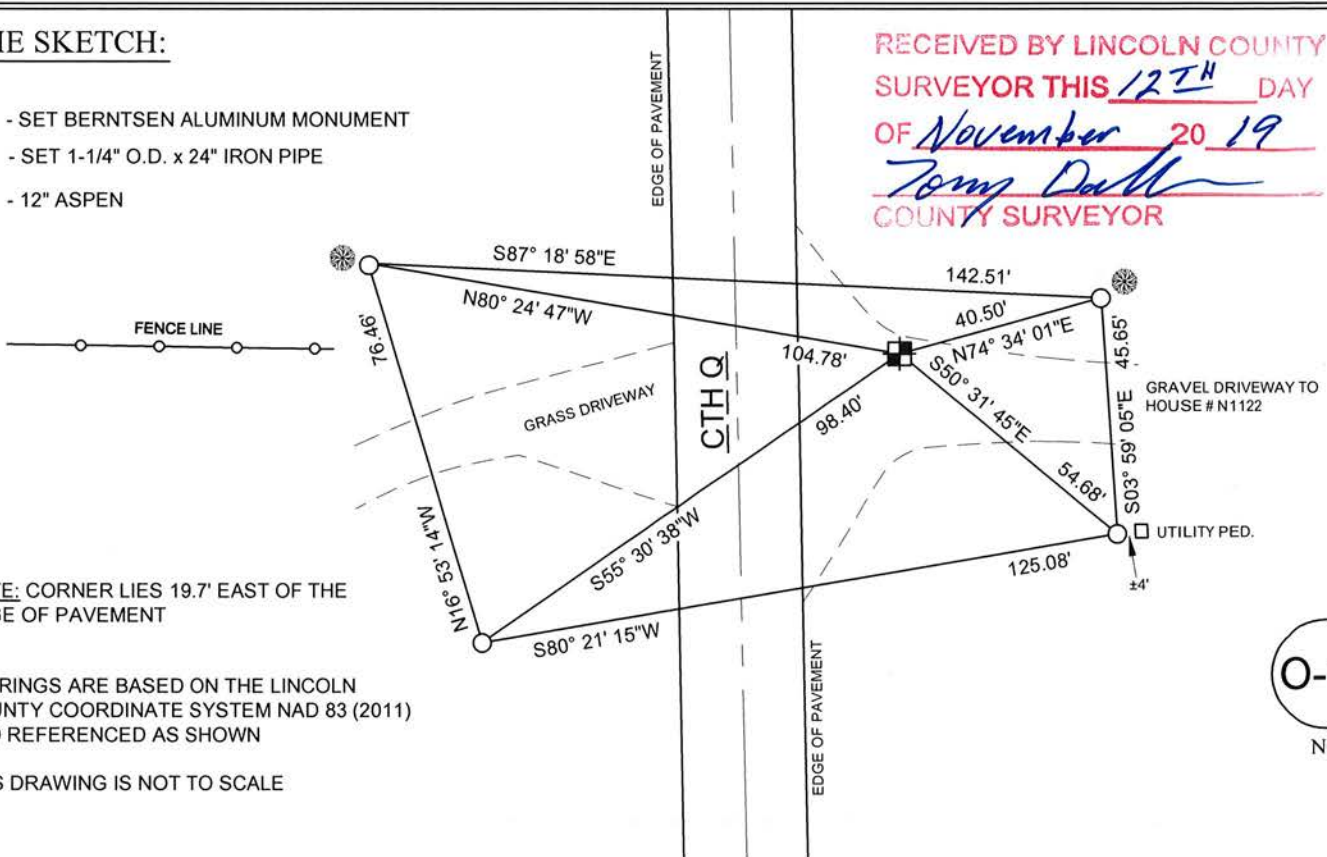
DATE: NOVEMBER 15TH, 2019

FIELD BOOK NO. NA PAGE NO. NA

COMPANY RIVERSIDE LAND SURVEYING LLC

TIE SKETCH:

- SET BERNTSEN ALUMINUM MONUMENT
- SET 1-1/4" O.D. x 24" IRON PIPE
- 12" ASPEN



RECEIVED BY LINCOLN COUNTY
SURVEYOR THIS 12TH DAY
OF November 20 19
Tommy Dahl
COUNTY SURVEYOR

NOTE: CORNER LIES 19.7' EAST OF THE
EDGE OF PAVEMENT

BEARINGS ARE BASED ON THE LINCOLN
COUNTY COORDINATE SYSTEM NAD 83 (2011)
AND REFERENCED AS SHOWN

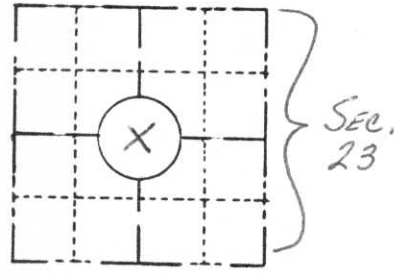
THIS DRAWING IS NOT TO SCALE

0-19
NO.

PRESERVATION OF LANDMARKS
 (Pursuant to Section 59.635(7) Wisconsin Statutes)

Wisconsin Department of Transportation
 E-D-707-87

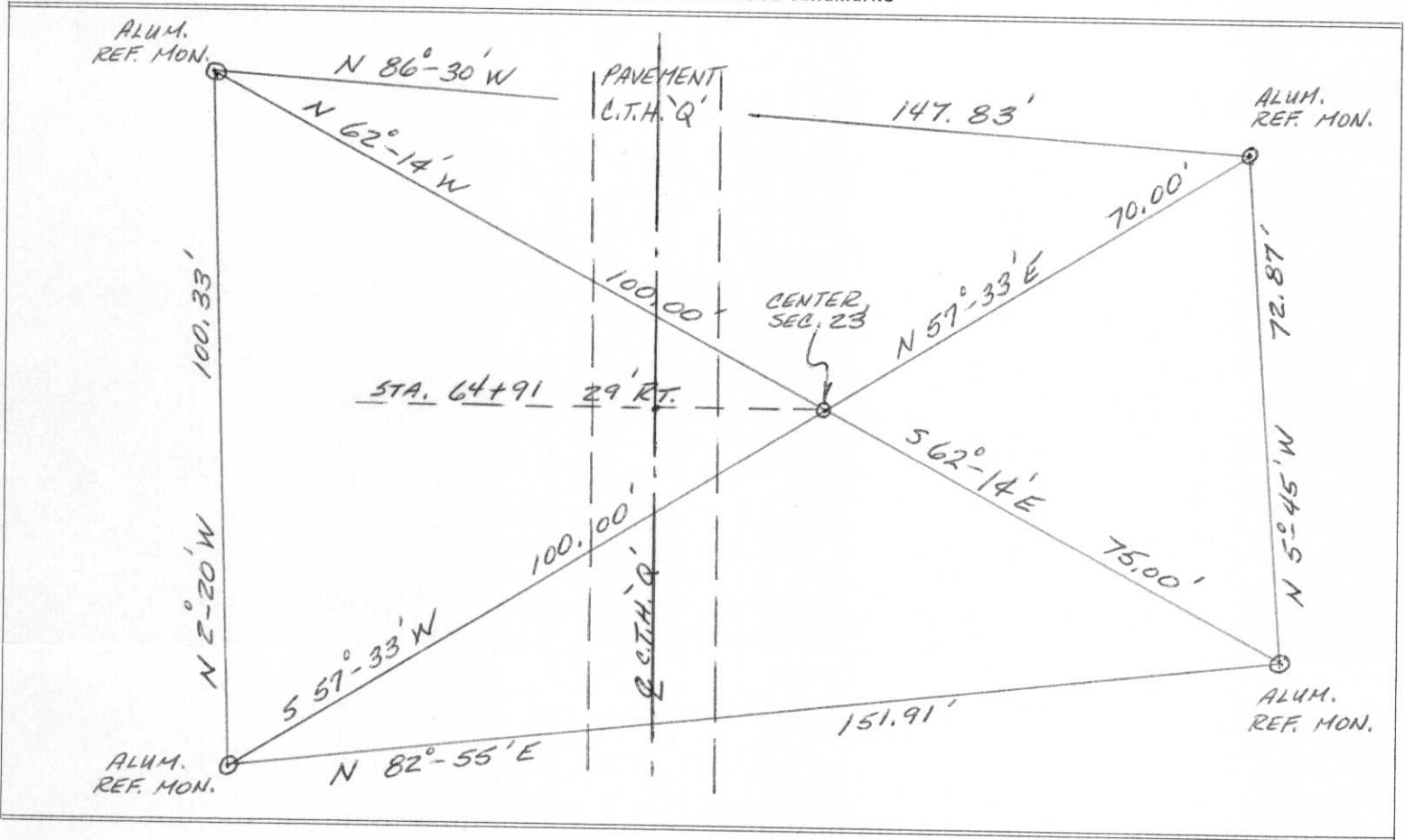
COUNTY <i>LINCOLN</i>		
TOWN <i>SCOTT</i>		
HIGHWAY <i>C.T.H. 'Q'</i>		
SECTION <i>23</i>	TOWNSHIP <i>31N</i>	RANGE <i>6E</i>
TYPE OF LANDMARK <i>2" IRON PIPE</i>		



LOCATION SKETCH
 (Location of landmark indicated by "x")



This space for copy of field notes or ties to the above described landmarks



FILED UNDER PROJECT NUMBER <i>9413-01-70</i>		
SHC DISTRICT OFFICE NUMBER <i>7</i>	CITY <i>RHINELANDER</i>	COUNTY <i>ONEIDA</i>
LOCATED OR ESTABLISHED BY <i>Tom Iden</i>		
NAME <i>Tom Iden</i>		<i>R.C.S 50166</i>
TITLE <i>Dist Const. 2 yr</i>		DATE <i>DEC 1, 1975</i>

COUNTY CLERK'S OFFICE COUNTY OF <i>Lincoln</i> WISCONSIN } ss	
DATE RECEIVED FOR RECORD <i>12/8/75</i>	DATE COPY SENT TO COUNTY SURVEYOR
SIGNATURE OF COUNTY CLERK <i>Ken Oldenburg</i>	

Index No. 0-19