

LINCOLN COUNTY U.S. PUBLIC LAND SURVEY MONUMENT LOCATION RECORD

SECTION 25
TOWNSHIP 31 N
RANGE 6 E

Q-21

NO.

LANDMARK BENCHMARK _____
CORNER IDENTITY: BERNTSEN SNM1 STEEL NAIL MARKER

FOUND
SET
RESET
RE-TIED

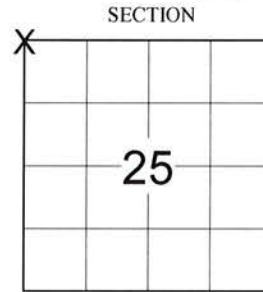
LINCOLN COUNTY COORDINATE: N: 111006.592
E: 391343.255
ELEVATION-(FEET): _____ DATUM: 83 (2011)

WEATHER: P. CLOUDY

DATE OF SURVEY: 10/10/2019 TEMPERATURE: 50 °F

SURVEY PARTY: KEITH WALKOWSKI AND AUSTIN PELOT

SCOTT
CITY, VILLAGE, TOWN

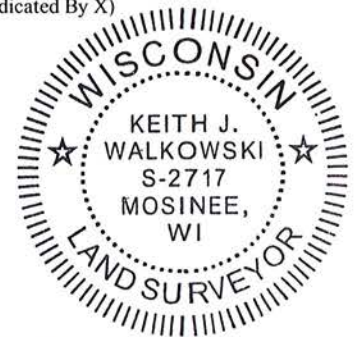


LOCATION
(Indicated By X)



BASIS FOR MONUMENT LOCATION:
(DESCRIBE METHOD OF SURVEY AND CORNER AUTHENTICATION)

SEARCHED FOR THE NORTHWEST CORNER OF SECTION 25 AND FOUND 2 TIES BUT NO CORNER MONUMENT. INTERSECTED THE TIES AND VERIFIED WITH DISTANCE TO ADJOINING SECTION CORNERS. SET A BERNTSEN SNM1 STEEL NAIL MARKER AT THE CORNER AND ADDED ADDITIONAL TIES TO PERPETUATE THE CORNER LOCATION AS SHOWN BELOW.



CERTIFIED CORRECT:

Keith J. Walkowski

KEITH J. WALKOWSKI S-2717
Professional Land Surveyor

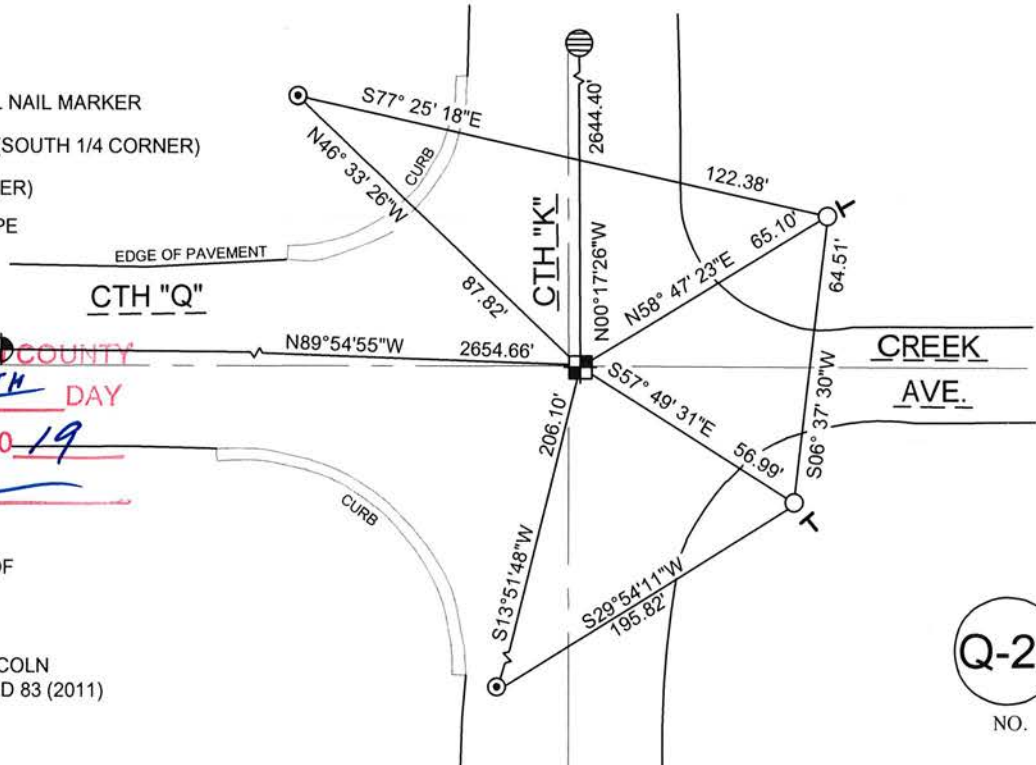
DATE: NOVEMBER 15, 2019

FIELD BOOK NO. NA PAGE NO. NA

COMPANY RIVERSIDE LAND SURVEYING LLC

TIE SKETCH:

- SET BERNTSEN SNM1 STEEL NAIL MARKER
- FOUND STONE MONUMENT (SOUTH 1/4 CORNER)
- FOUND SMP (EAST 1/4 CORNER)
- SET 1-1/4" O.D. x 24" IRON PIPE
- FOUND 3/4" REBAR
- SET VINYL "T" POST



RECEIVED BY LINCOLN COUNTY
SURVEYOR THIS 12TH DAY
OF November 20, 19
Tony Dahl
COUNTY SURVEYOR

NOTE: CORNER LIES 0.25' SOUTH OF
CTH Q AND 2.6' EAST OF CTH K

BEARINGS ARE BASED ON THE LINCOLN
COUNTY COORDINATE SYSTEM NAD 83 (2011)
AND REFERENCED AS SHOWN

THIS DRAWING IS NOT TO SCALE

Q-21

NO.

U.S. PUBLIC LAND SURVEY MONUMENT RECORD

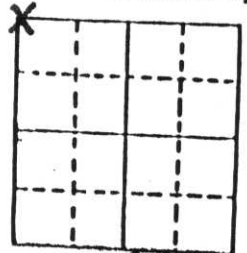
Note: This form is intended and designed to fulfill all requirements of Wisconsin Administrative Code, Chapter A-E 5.02, U.S. Public Land Survey Monument Record (3) (a) (b) (c) (d) (e) (f) (g) (h) (i). An additional sheet may be added if necessary to conform with said requirements.

(a) Corner location: Township 31 North

Range 6 East

Town SCOTT

County LINCOLN

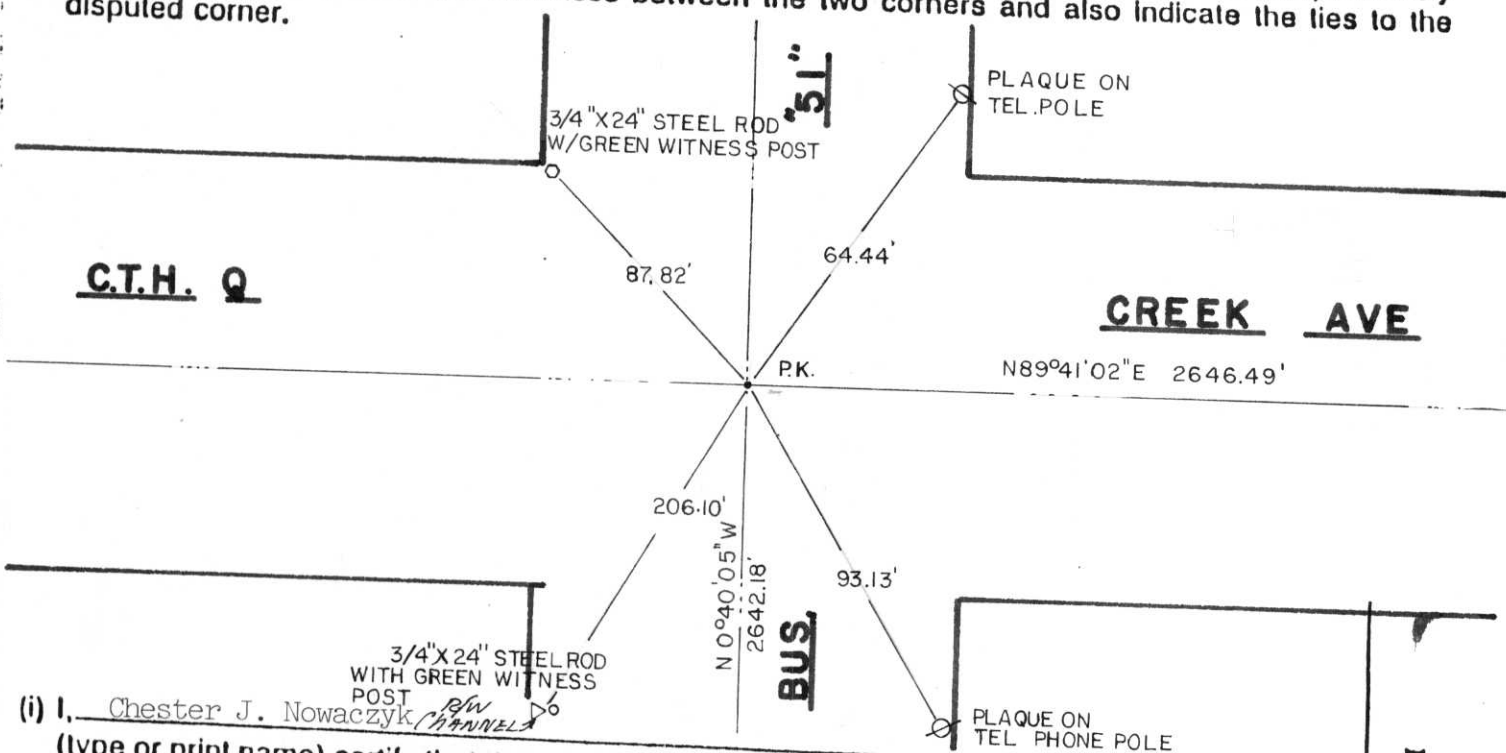


Section 25

b) (f) (g) (h) Description of monument found at this corner and if it was accepted, state all evidence (material, testimonial, occupational, plats, records, other monuments) used as a basis for accepting. If not accepted or if nothing was found, state evidence used as basis for establishing location. If reestablished through lost corner proportionate methods, indicate all monuments, distances and directions used to establish.

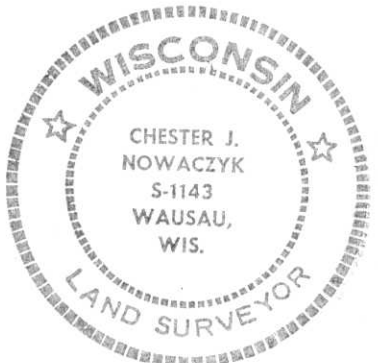
Did not dig for corner because concrete pavement. Found existing hole in the concrete pavement with the remains of metal in it. Measured to the N $\frac{1}{4}$ and W $\frac{1}{4}$ corners and this fit Bus. Hwy "51" and County Remonumentation Plans very well. Set PK nail and witnessed out.

c) (d) (e) Plan view of corner with ties to at least 4 witness monuments. If in disagreement with previously established corner, show the distances between the two corners and also indicate the ties to the disputed corner.



(i) I, Chester J. Nowaczyk (type or print name) certify that the corner location on this record was determined by me or under my direction and control and that this U.S. Public Land Survey Monument Record is correct and complete to the best of my knowledge and belief.

Chester J. Nowaczyk Signature _____ Date _____



Index No. Q-21