

U.S. PUBLIC LAND SURVEY MONUMENT RECORD

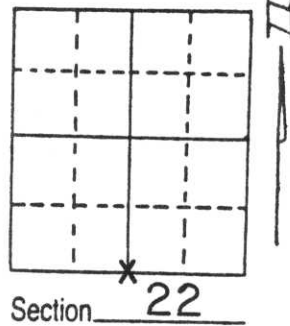
Note: This form is intended and designed to fulfill all requirements of Wisconsin Administrative Code, Chapter A-E 5.02, U.S. Public Land Survey Monument Record (3) (a) (b) (c) (d) (e) (f) (g) (h) (i). An additional sheet may be added if necessary to conform with said requirements.

(a) Corner location: Township 31 North

Range 6 East

Town/City/Village TOWN OF SCOTT

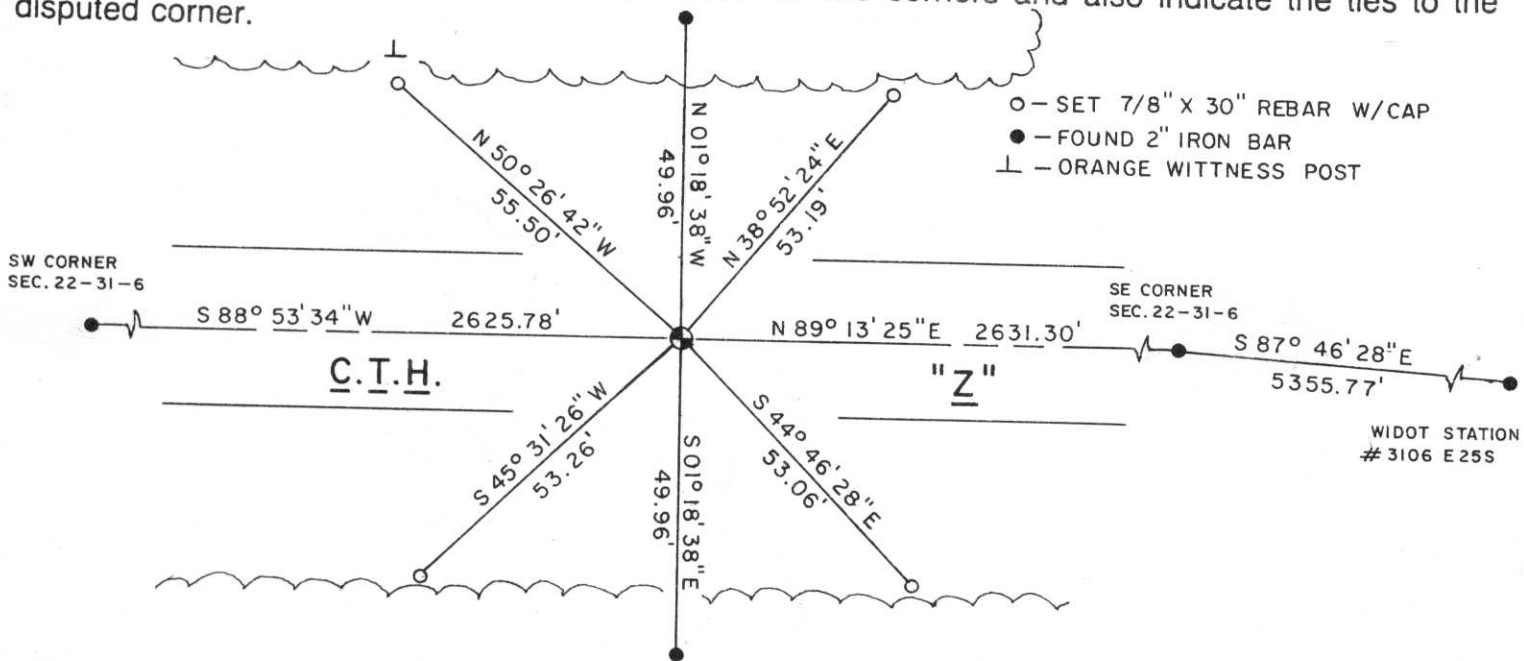
County LINCOLN



(b) (f) (g) (h) Description of monument found at this corner and if it was accepted, state all evidence (material, testimonial, occupational, plats, records, other monuments) used as a basis for accepting. If not accepted or if nothing was found, state evidence used as basis for establishing location. If reestablished through lost corner proportionate methods, indicate all monuments, distances and directions used to establish.

DUG WITH BACKHOE AND RECOVERED BOTTOM PORTION OF A 7"x 7" RED GRANITE STONE MONUMENT UPRIGHT AND INTACT ABOUT 30 INCHES BELOW ROADWAY SURFACE. TOP OF STONE HAD BEEN SHEARED OFF AND WAS NOT RECOVERED. ALSO RECOVERED WERE TWO 2" ROUND SOLID IRON BARS OR SHAFTS TO NORTH AND SOUTH OF STONE. MONUMENT FOUND PRESUMED TO BE ONE SET BY LOUIS KLEINSCHMIDT DURING RESURVEY OF TOWN OF SCOTT IN 1903. REMONUMENTATION MAP AT COUNTY SURVEYOR'S OFFICE INDICATE A STONE WAS PLACED AT THIS CORNER DURING 1903 SURVEY. SET A LINCOLN COUNTY STANDARD BERNTSEN MONUMENT OVER STONE SUCH THAT TOP OF MONUMENT WAS SITUATED ABOUT 6" BELOW BLACKTOP ROADWAY SURFACE. ALSO SET 3/4" x 24" IRON BAR ALONG NORTH FACE OF STONE AND A 3" x 8" MAGNETIZED METAL STRAP ATOP STONE TO AID IN FUTURE RECOVERY.

(c) (d) (e) Plan view of corner with ties to at least 4 witness monuments. If in disagreement with previously established corner, show the distances between the two corners and also indicate the ties to the disputed corner.



(i) I, LaVERNE H. MOSHER
 (type or print name) certify that the corner location on this record was determined by me or under my direction and control and that this U.S. Public Land Survey Monument Record is correct and complete to the best of my knowledge and belief.

LaVerne H. Mosher
 Signature

FEBRUARY 25, 1998
 Date



Index No. Q-15