

# U.S. PUBLIC LAND SURVEY MONUMENT RECORD

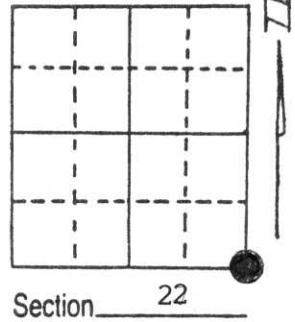
Note: This form is intended and designed to fulfill all requirements of Wisconsin Administrative Code, Chapter A-E 5.02, U.S. Public Land Survey Monument Record (3) (a) (b) (c) (d) (e) (f) (g) (h) (i). An additional sheet may be added if necessary to conform with said requirements.

(a) Corner location: Township 31 North

Range 6 East

Town/City/Village TN. OF SCOTT

County LINCOLN



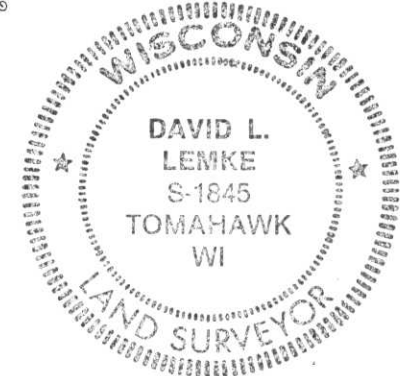
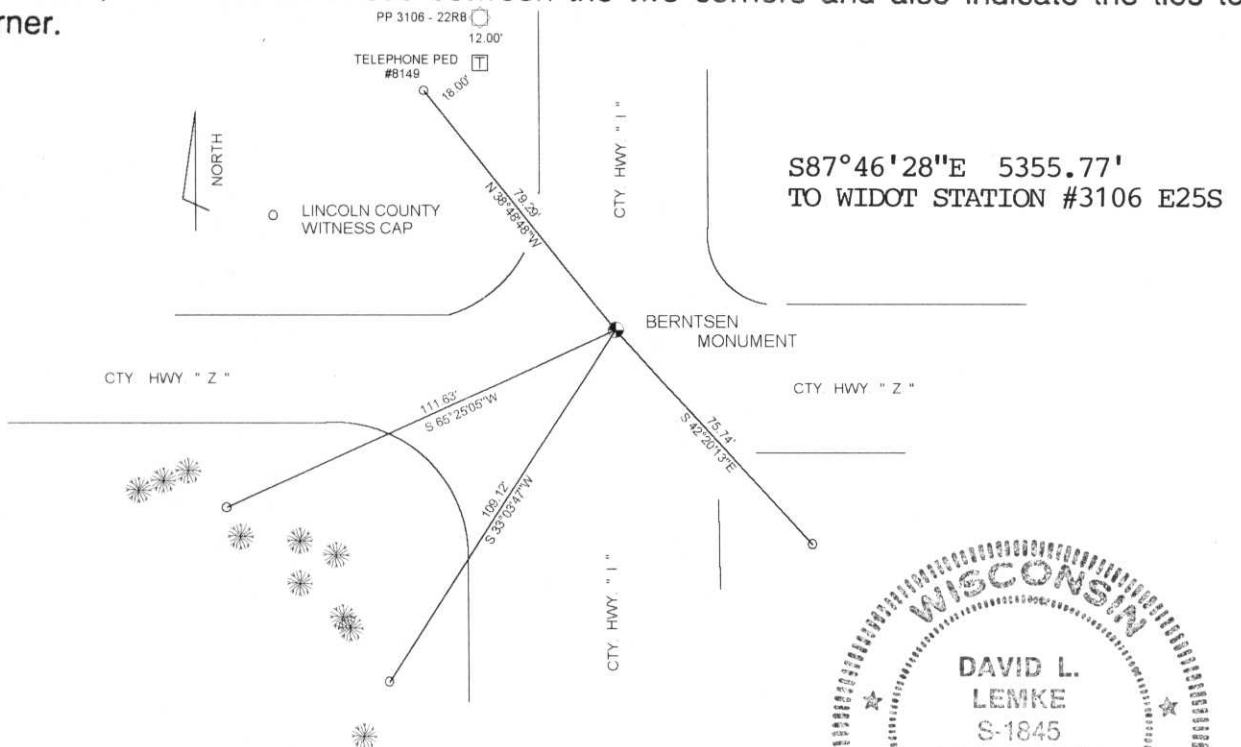
(b) (f) (g) (h) Description of monument found at this corner and if it was accepted, state all evidence (material, testimonial, occupational, plats, records, other monuments) used as a basis for accepting. If not accepted or if nothing was found, state evidence used as basis for establishing location. If reestablished through lost corner proportionate methods, indicate all monuments, distances and directions used to establish.

NOVEMBER OF 1985 SHERIDAN SCHWARK RECOVERED A 6"x6" GRANITE STONE PRESUMED TO BE SET BY LOUIS KLEINSCHMIDT . HE RESET THE CORNER WITH A BERNTSEN MONUMENT IN APRIL OF 1986.

IN JUNE OF 1996 I FOUND THE BERNTSEN AND THE POWER POLE TIE ESTABLISHED BY SHERIDAN.

**RECEIVED AT LINCOLN COUNTY  
COURTHOUSE THIS 14th DAY  
OF Oct 19 96  
*Paul Grube*  
**TAX DESCRIPTION OFFICE****

(c) (d) (e) Plan view of corner with ties to at least 4 witness monuments. If in disagreement with previously established corner, show the distances between the two corners and also indicate the ties to the disputed corner.



(i) I, DAVID L. LEMKE  
(type or print name) certify that the corner location on this record was determined by me or under my direction and control and that this U.S. Public Land Survey Monument Record is correct and complete to the best of my knowledge and belief.

OCTOBER 2, 1996

Signature

Date

Index No. Q-17

# U.S. PUBLIC LAND SURVEY MONUMENT RECORD

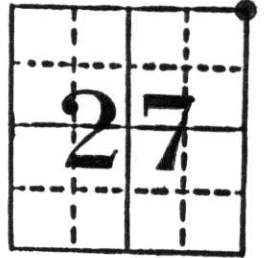
**Note:** This form is intended and designed to fulfill all requirements of Wisconsin Administrative Code, Chapter A-E 5.02, U.S. Public Land Survey Monument Record (3) (a) (b) (c) (d) (e) (f) (g) (h) (i). An additional sheet may be added if necessary to conform with said requirements.

(a) Corner location: Township 31 North

Range 6 East

Town Scott

County Lincoln

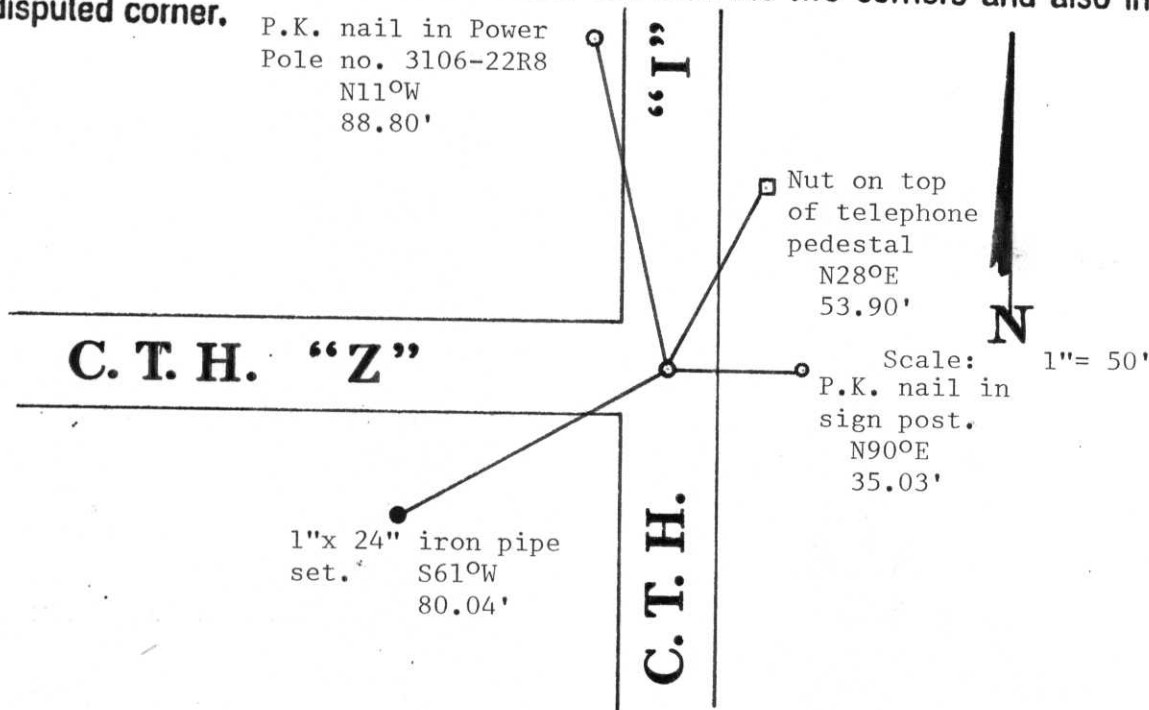


Section 27

b) (f) (g) (h) Description of monument found at this corner and if it was accepted, state all evidence (material, testimonial, occupational, plats, records, other monuments) used as a basis for accepting. If not accepted or if nothing was found, state evidence used as basis for establishing location. If reestablished through lost corner proportionate methods, indicate all monuments, distances and directions used to establish.

We dug the intersection on 11/11/1985 and found a 6" x 6" granite monument which we assume was set during the resurvey of the Town of Scott by Louis Kleinschmidt. We removed the granite and reset a Lincoln County Berntsen Monument with the references shown below on April 2, 1986 due to the County Highway department wanting to patch the road before we set the monument.

c) (d) (e) Plan view of corner with ties to at least 4 witness monuments. If in disagreement with previously established corner, show the distances between the two corners and also indicate the ties to the disputed corner.



(f) I, Sheridan D. Schwark, Registered Land Surveyor no. S-1205

(type or print name) certify that the corner location on this record was determined by me or under my direction and control and that this U.S. Public Land Survey Monument Record is correct and complete to the best of my knowledge and belief.

Sheridan D. Schwark  
Signature

April 2, 1986

Date



Index No. Q-17