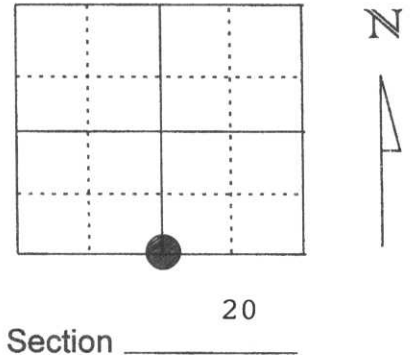


# U.S. PUBLIC LAND SURVEY MONUMENT RECORD

Note: This form is intended and designed to fulfill all requirements of Wisconsin Administrative Code, Chapter A-E 5.02, U.S. Public Land Survey Monument Record (3) (a) (b) (c) (d) (e) (f) (g) (h) (l). An additional sheet may be added if necessary to conform with said requirements.

(a) Corner location: Township 31 North  
 Range 6 East  
 Town/City/Village TN. OF SCOTT  
 County Lincoln

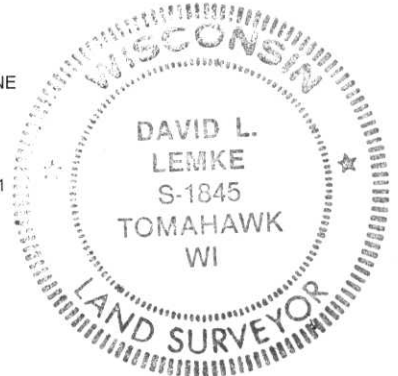
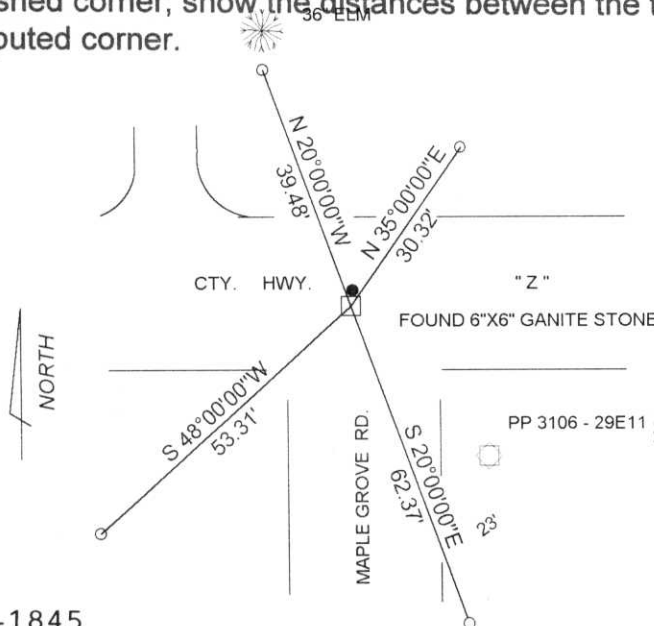


(b) (f) (g) (h) Description of monument found at this corner and if it was accepted, state all evidence (material, testimonial, occupational, plats, records, other monuments) used as a basis for accepting. If not accepted or if nothing was found, state evidence used as basis for establishing location. If reestablished through lost corner proportionate methods, indicate all monuments, distances and directions used to establish.

FOUND A 6"X6" GRANITE STONE 1' SOUTH C/L HWY. "Z" ON C/L OF MAPLE GROVE ROAD. 18" BELOW PAVEMENT. SET 1" IRON BAR ON NORTH SIDE OF STONE AND WITNESS CAPS AS SHOWN.

(c) (d) (e) Plan view of corner with ties to at least 4 witness monuments. If in disagreement with previously established corner, show the distances between the two corners and also indicate the ties to the disputed corner.

RECEIVED AT LINCOLN COUNTY COURTHOUSE THIS 26 DAY OF April 1998  
 Tax Description Office  
*Pat Priole*



DAVID LEMKE S-1845

(l) I, DAVID LEMKE S-1845 ○ LINCOLN COUNTY WITNESS CAP  
 (type or print name) certify that the corner location on this record was determined by me or under my direction and control and that this U.S. Public Land Survey Monument Record is correct and complete to the best of my knowledge and belief.

*David Lemke*

MAR. 30 1998

Signature

Date