

CERTIFIED LAND CORNER RESTORATION

Index No. M-11

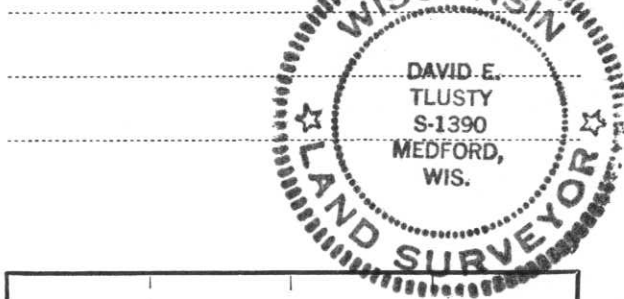
State of Wisconsin }
County of Lincoln } ss.

I David E. Tlusty, do hereby certify that on the 18th day of April, 1980, I found evidence of the South 1/4 corner of Section 16 Township 31, North, Range 6 East, Fourth Principal Meridian, as described hereon; and that from this evidence I established a new monument and accessories as described hereon to perpetuate the original location of this corner.

History of original corner establishment:
This corner was re-established by the re-survey of part of the Town of Scott, completed in June of 1903 by L. Kleinschmidt and Herman Rusch.

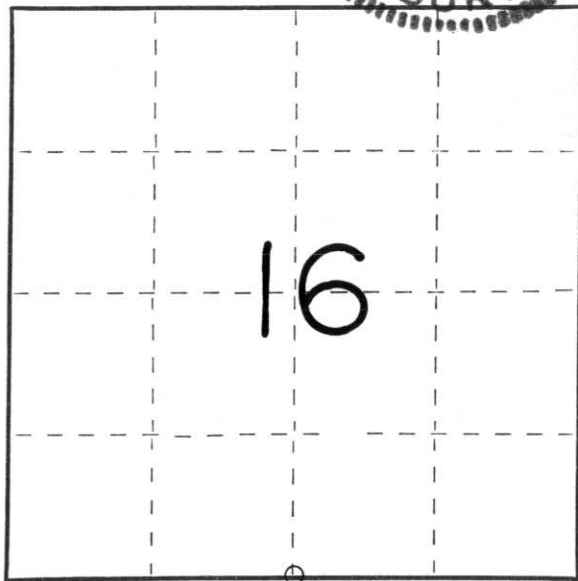
Description of corner evidence found:
On October 3, 1979, Sheridan Schwark found and removed a 6" x 6" x 35" red granite monument located at the South 1/4 corner of Section 16.

Resident witnesses:



Description of monument and accessories I established to perpetuate the original location of this corner.
From temporary ties by Sheridan Schwark, I set a Lincoln County Berntsen Monument for the South 1/4 corner of Section 16, and re-tied as shown on the reverse side of this sheet.

NOTE: This Certified Land Corner Restoration supersedes a previous Certified Land Corner Restoration dated July 12, 1979.



○ = Corner monument restored.

Dated at Medford, Wis., this 27th day of May, 1980.

Signature David E. Tlusty Title Registered Land Surveyor Registration No. 1390
(County Surveyor, Registered Land Surveyor, or other duly authorized official)

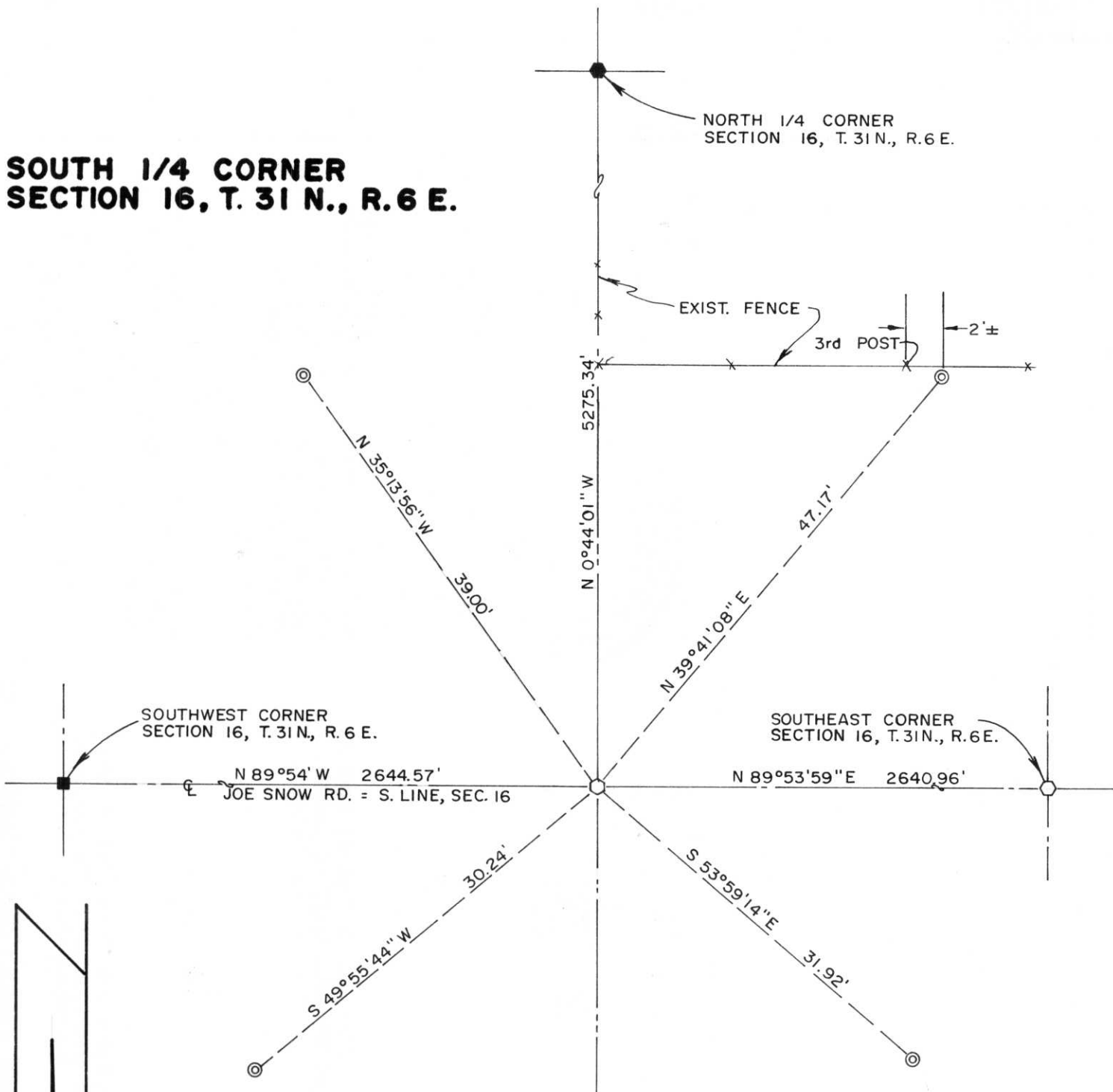
Office of Register of Deeds, County of _____, I hereby certify that the within instrument was filed in this office for record on the _____ day of _____, 19____ at _____ o'clock _____ M.

(Register of Deeds)

By _____ Deputy

Redrafted to correct Tie Sheet
Submitted July 20, 1979

**SOUTH 1/4 CORNER
SECTION 16, T. 31 N., R. 6 E.**



- Lincoln County Berntsen Monument found in place
- Lincoln County Berntsen Monument set
- ⊙ 2" x 30" Iron pipe set
- Stone monument found in place

RECEIVED AT LINCOLN COUNTY
COURTHOUSE THIS 28th DAY
OF May 19 80.
Hal Arabe
TAX DESCRIPTION OFFICE

CERTIFIED LAND CORNER RESTORATION

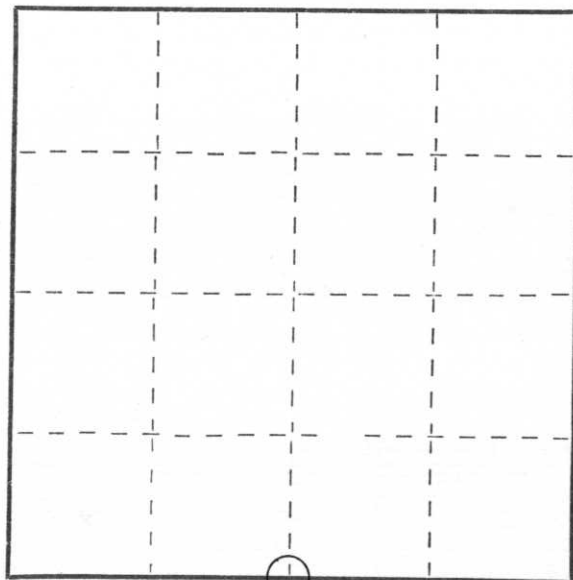
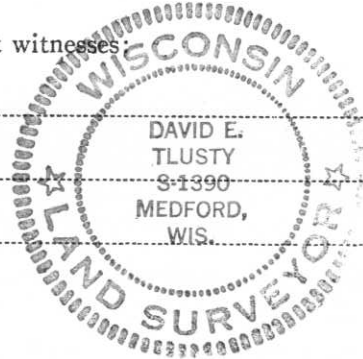
Index No. M-11

State of Wisconsin }
County of Lincoln } ss.

I David E. Tlusty do hereby certify that on the 6th day of July, 19 79, I found evidence of the South 1/4 corner of Section 16 Township 31, North, Range 6 East, Fourth, Principal Meridian, as described hereon; and that from this evidence I established a new monument and accessories as described hereon to perpetuate the original location of this corner.

Resident witnesses

.....
.....
.....
.....
.....
.....



○ = Corner monument restored.

History of original corner establishment:

This corner was re-established by the resurvey of part of the Town of Scott, completed in June, 1903, by L. Kleinschmidt and Herman Rusch.

Description of corner evidence found:

Permission to dig for this corner was requested from Mr. Louis Kleinschmidt, Town Chairman, Town of Scott. Mr. Kleinschmidt would or could not give this permission, therefore this corner was re-established by single proportionate measurement between the SE and SW corner of Section 16. A Lincoln County Berntsen monument was set at this location.

See reverse side for witness monument types and locations.

Description of monument and accessories I established to perpetuate the original location of this corner.

See reverse side.

Dated at Medford, Wis., this 12 day of July, 19 79.

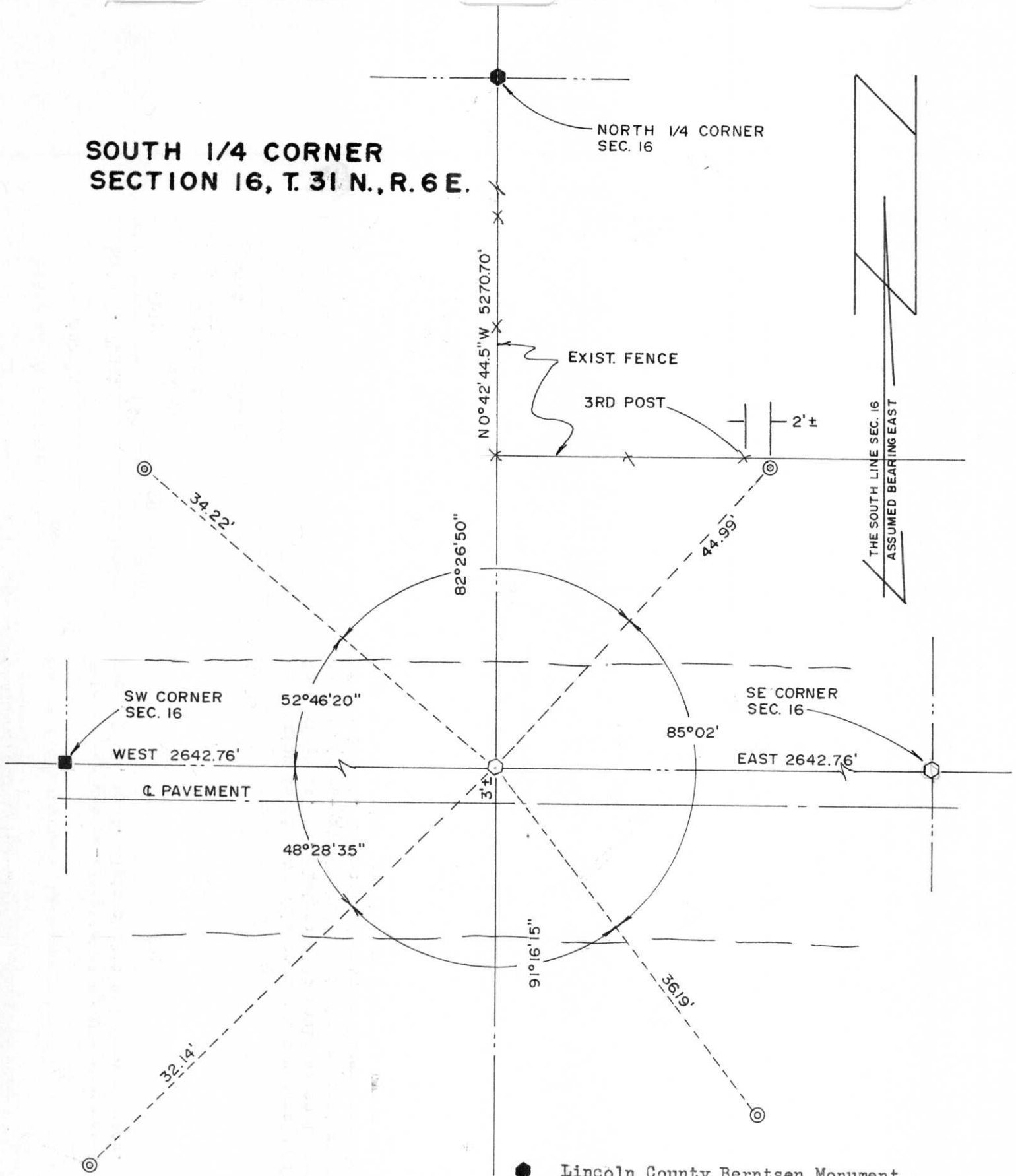
Signature David E. Tlusty Title Registered Land Surveyor Registration No. S-1390
(County Surveyor, Registered Land Surveyor, or other duly authorized official)

Office of Register of Deeds, County of Lincoln, I hereby certify that the within instrument was filed in this office for record on the _____ day of _____, 19 _____ at _____ o'clock _____ M.

.....
(Register of Deeds)

By _____ Deputy

**SOUTH 1/4 CORNER
SECTION 16, T. 31 N., R. 6 E.**



- Lincoln County Berntsen Monument found in place
- Lincoln County Berntsen Monument set
- ⊙ 2"x30" Iron pipe set
- Stone monument found in place

RECEIVED AT LINCOLN COUNTY
COURTHOUSE THIS 20 DAY
OF July 1979.
Pat V. Ruelke
TAX DESCRIPTION OFFICE