

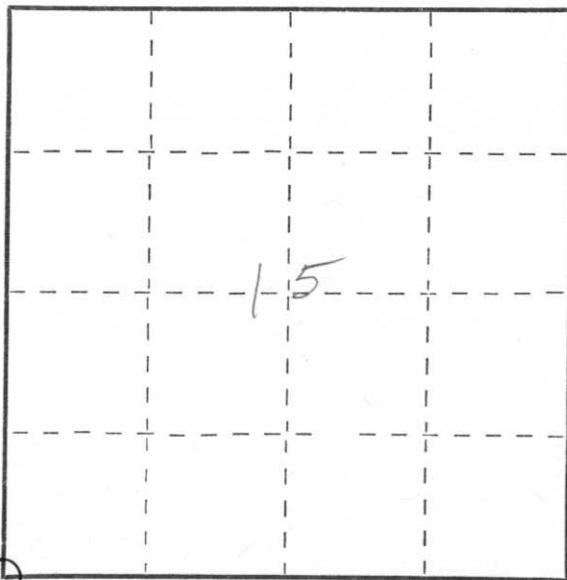
CERTIFIED LAND CORNER RESTORATION

Index No. M-13

State of Wisconsin }
County of Lincoln } ss.

I David E. Tlusty, do hereby certify that on the 6th day of July, 19 79, I found evidence of the Southwest corner of Section 15 Township 31, North, Range 6 East, Fourth, Principal Meridian, as described hereon; and that from this evidence I established a new monument and accessories as described hereon to perpetuate the original location of this corner.

Resident witness



○ = Corner monument restored.

History of original corner establishment:

This corner was re-established by the resurvey of part of the Town of Scott, completed in June, 1903, by L. Kleinschmidt and Herman Rusch

Description of corner evidence found:

Found P.K. nail in place. Permission to dig for this corner was requested from Mr. Louis Kleinschmidt, Town Chairman, Town of Scott. Mr. Kleinschmidt would or could not give this permission. We then checked the distances from the found P.K. nail to other monuments and apparent property lines in the area and on the basis of these measurements accepted the P.K. nail as the location of this section corner. We removed the P.K. nail and replaced it with a Lincoln County Berntsen monument.

Description of monument and accessories I established to perpetuate the original location of this corner.

See reverse side.

Dated at Medford, Wis., this 17th day of July, 19 79.

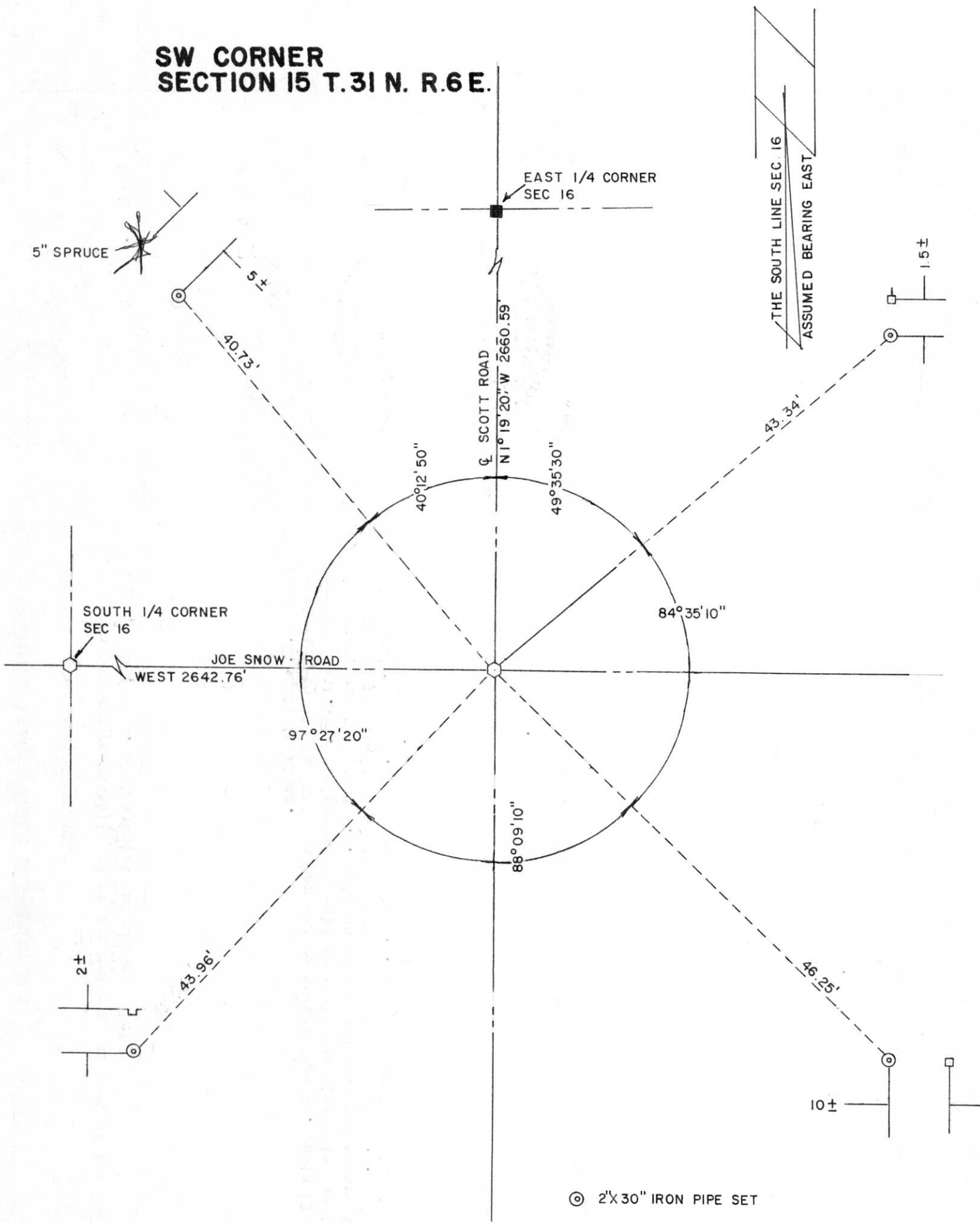
Signature David E. Tlusty Title Registered Land Surveyor Registration No. S-1390
(County Surveyor, Registered Land Surveyor, or other duly authorized official)

Office of Register of Deeds, County of _____, I hereby certify that the within instrument was filed in this office for record on the _____ day of _____, 19 _____ at _____ o'clock _____ M.

(Register of Deeds)

By _____ Deputy

**SW CORNER
SECTION 15 T.31 N. R.6 E.**



- ⊙ 2'x30" IRON PIPE SET
- TELEPHONE RISER BOX
- ⊞ EXISTING POWER POLE
- ⬡ LINCOLN COUNTY BERNTSEN MONUMENT SET
- STONE MONUMENT FOUND IN PLACE
- ⌋ UNDERGROUND CABLE SIGN

RECEIVED AT LINCOLN COUNTY
COURTHOUSE THIS 20 DAY
OF July 1979.
Pat Riecke
TAX DESCRIPTION OFFICE