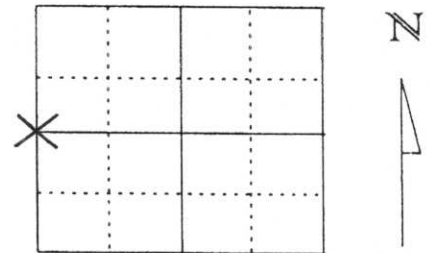


U.S. PUBLIC LAND SURVEY MONUMENT RECORD

Note: This form is intended and designed to fulfill all requirements of Wisconsin Administrative Code, Chapter A-E 5.02, U.S. Public Land Survey Monument Record (3) (a) (b) (c) (d) (e) (f) (g) (h) (l). An additional sheet may be added if necessary to conform with said requirements.

(a) Corner location: Township 31 North
 Range 6 East
 Town/City/Village SCOTT
 County Lincoln

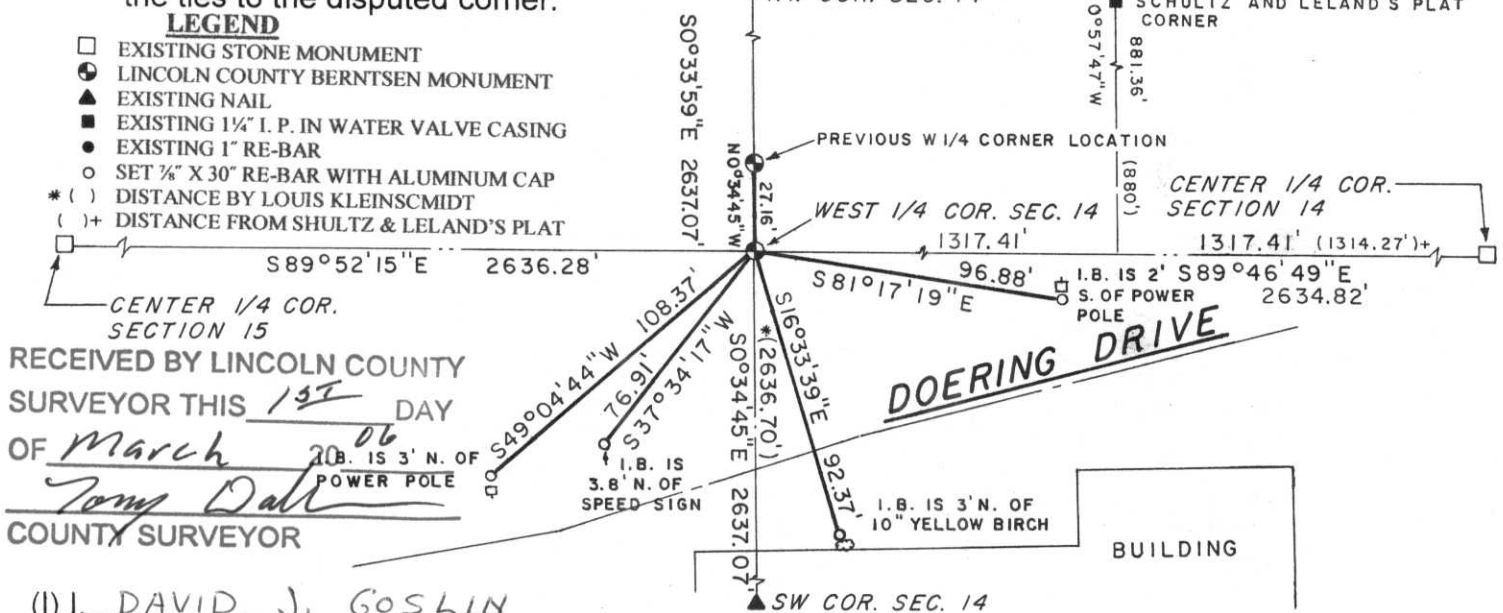


Section 14

(b) (f) (g) (h) Description of monument found at this corner and if it was accepted, state all evidence (material, testimonial, occupational, plats, records, other monuments) used as a basis for accepting. If not accepted or if nothing was found, state evidence used as basis for establishing location. If reestablished through lost corner proportionate methods, indicate all monuments, distances and directions used to establish.

IN MARCH OF 1852 F. S. ELLIS SET 1/4 SECTION POST WITH THE FOLLOWING TIES: HEMLOCK 12 S18°W, 25 LINKS AND BIRCH 10 N40°W, 29 LINKS. IN 1903 LOUIS KLEINSCHMIDT SET A STONE MONUMENT FOR WEST 1/4 CORNER. PRIOR TO 1978 BECHER-HOPPE ENGINEERS SET A 2" IRON PIPE FOR WEST 1/4 CORNER. IN APRIL OF 1978 S. SCHWARK S-1205 ACCEPTED 2" IRON PIPE SET BY BECHER-HOPPE ENGINEERS AND SET A LINCOLN COUNTY BERNTSEN MONUMENT AND TIED OUT. WE MEASURED SECTIONS 14 AND 15 INCLUDING BOTH EXISTING CENTER OF SECTIONS. WE ALSO LOCATED EXISTING ROAD CENTERLINES AND SCHULTZ AND LELAND'S PLAT CORNERS. AFTER ANALYZING THE INFORMATION COLLECTED, I CONCLUDED THE LOCATION FOR THE WEST 1/4 CORNER WAS NOT CORRECT. WE COULD NOT DIG FOR THE STONE SET BY KLEINSCHMIDT BECAUSE CORNER LOCATION WAS IN A LARGE FILL AREA. I DECIDED TO SET THE WEST 1/4 CORNER ON A SINGLE PROPORTIONATE MEASUREMENT BETWEEN THE SW AND NW CORNERS BUT HOLDING THE ALIGNMENT FROM THE SW CORNER TO THE PREVIOUS WEST 1/4 CORNER LOCATION. THE NEW WEST 1/4 CORNER POSITION FITS KLEINSCHMIDT'S DISTANCE TO THE SOUTH, FITS DISTANCES FROM SCHULTZ AND LELANDS PLAT TO THE EAST. FITS THE CENTERLINE OF DOERING DRIVE TO THE WEST AND IS IN LINE WITH THE CENTER 1/4 CORNER OF SECTION 14 AND THE WEST 1/4 CORNER OF SECTION 14. WE SET A LINCOLN COUNTY BERNTSEN MONUMENT AND TIED OUT AS SHOWN BELOW.

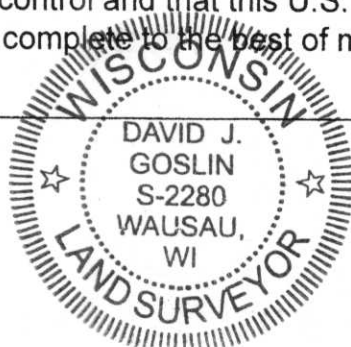
(c) (d) (e) Plan view of corner with ties to at least 4 witness monuments. If in disagreement with previously established corner, show the distances between the two corners and also indicate the ties to the disputed corner.



RECEIVED BY LINCOLN COUNTY SURVEYOR THIS 13TH DAY OF March 2006
Tom Dal
 COUNTY SURVEYOR

(l) I, DAVID J. GOSLIN
 (type or print name) certify that the corner location on this record was determined by me or under my direction and control and that this U.S. Public Land Survey Monument Record is correct and complete to the best of my knowledge and belief.

David J. Goslin
 Signature



2-27-06
 Date