

U.S. PUBLIC LAND SURVEY MONUMENT RECORD

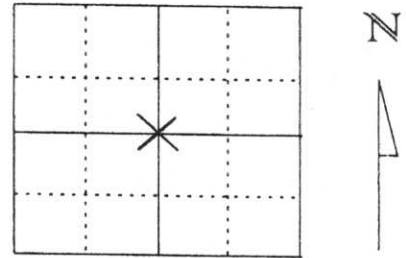
Note: This form is intended and designed to fulfill all requirements of Wisconsin Administrative Code, Chapter A-E 5.02, U.S. Public Land Survey Monument Record (3) (a) (b) (c) (d) (e) (f) (g) (h) (i). An additional sheet may be added if necessary to conform with said requirements.

(a) Corner location: Township 31 North

Range 6 East

Town/City/Village MERRILL

County Lincoln

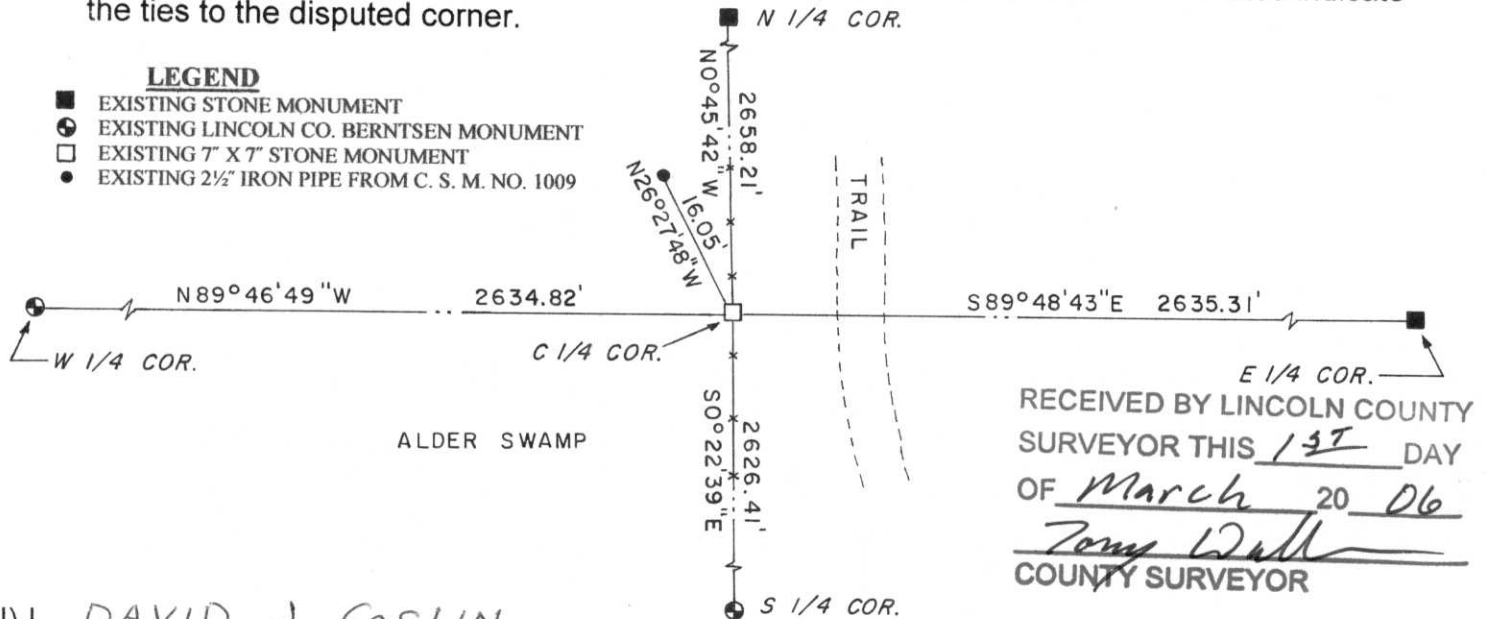


Section 14

(b) (f) (g) (h) Description of monument found at this corner and if it was accepted, state all evidence (material, testimonial, occupational, plats, records, other monuments) used as a basis for accepting. If not accepted or if nothing was found, state evidence used as basis for establishing location. If reestablished through lost corner proportionate methods, indicate all monuments, distances and directions used to establish.

G. R. STURDEVANT SURVEYED PART OF GOVERNMENT LOT 5 OF SECTION 14 (DATE UNKNOWN) AND SET A 4" X 6" X 24" STONE MONUMENT. HIS MAP IS ON FILE AT THE LINCOLN COUNTY SURVEYORS OFFICE. WE SURVEYED INTO CORNER LOCATION AND FOUND A 7" X 7" X 24" STONE MONUMENT HEAVED UP. WE RE-SET STONE AND SURROUNDED WITH ROCKS. STONE IS ON AN OLD NORTH-SOUTH FENCE LINE WHICH IS MOSTLY DOWN. STONE HAS AN "X" ON TOP AND ON THE EAST SIDE C 1/4 IS CARVED.

(c) (d) (e) Plan view of corner with ties to at least 4 witness monuments. If in disagreement with previously established corner, show the distances between the two corners and also indicate the ties to the disputed corner.



(I) I, DAVID J. GOSLIN
(type or print name) certify that the corner location on this record was determined by me or under my direction and control and that this U.S. Public Land Survey Monument Record is correct and complete to the best of my knowledge and belief.

David J. Goslin
Signature



2-27-06
Date

Index No. K-19