

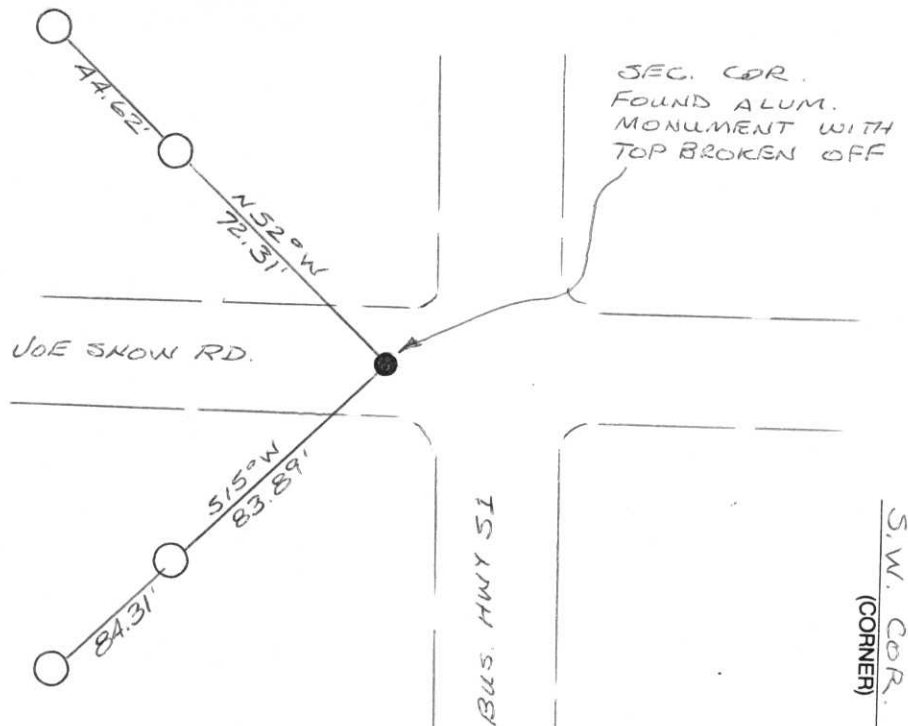
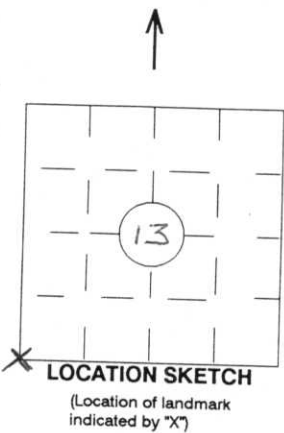
RECORD AND CERTIFICATION OF U.S. PUBLIC LAND SURVEY CONTROL STATION

Wisconsin Department of Transportation

ED716 687

District 7	Project ID 9675-05-00	Located By R.B. JOHNSON - SURVEY CREW CHIEF		
Corner S.W. COR. SEC. 13	Township 31N	Range (E,W) 6E	County LINCOLN	
Wisconsin Coordinates	East (X)	North (Y)	Elevation (Z)	Zone
Control Station Name	East (X)	North (Y)	Elevation (Z)	Zone
Horizontal - NORTH AMERICAN, 1927	CONTROL DATUM		Vertical - MEAN SEA LEVEL, 1929 ADJUSTMENT	
Horizontal - _____	SURVEY CONTROL		Vertical - _____	
Order	Order		Order	

SKETCH



I hereby certify that on the date of APRIL 1, 1996 the above corner was located by a marker and/or references established by EDWIN ABENDROTH (registered land surveyor) S-798 (registration no.)

I further certify that to perpetuate the location of said corner, on the date of APRIL 1, 1996 at the exact location thereof, a permanent marker or witness monuments consisting of FOUR 3" X 30" BERNTSEN MAGNETIC ALUMINUM MONUMENTS were located as shown above.

Signature (District Survey Supervisor) Dave Finley

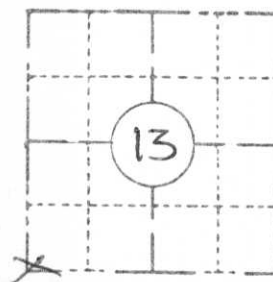
RECEIVED AT LINCOLN COUNTY COURTHOUSE THIS 17 DAY OF APRIL 1996 TAX DESCRIPTION OFFICE

S.W. COR. (CORNER) 13 (SECTION) 31N (TOWN) 6E (RANGE)

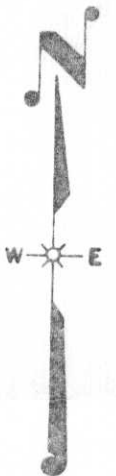
FIELD SURVEY NOTES
PRESERVATION OF LANDMARKS
 (Pursuant to Section 59.635(7) Wisconsin Statutes
 E-D-707-69

State of Wisconsin / Department of Transportation

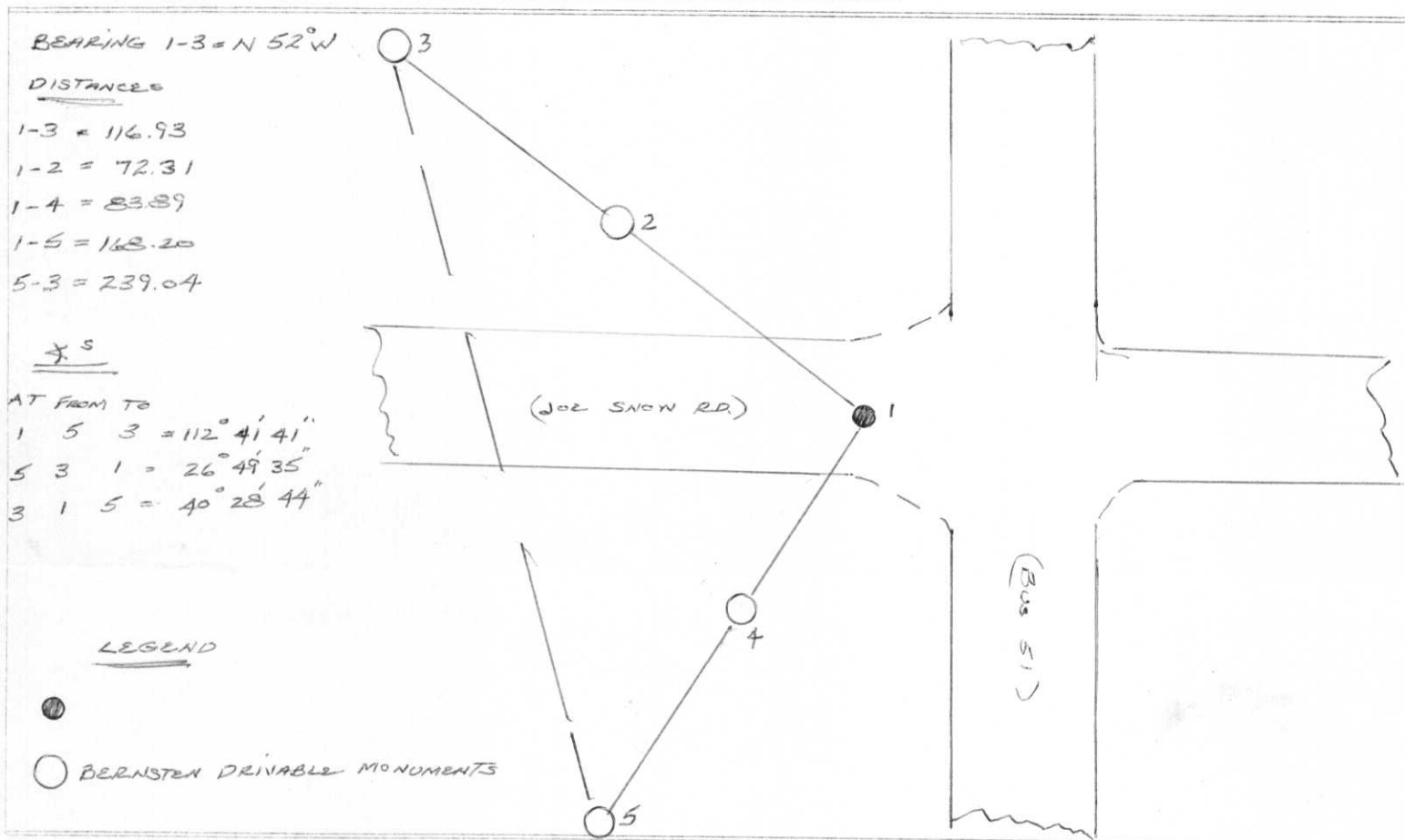
COUNTY		
TOWN		
HIGHWAY		
SECTION	TOWNSHIP	RANGE
TYPE OF LANDMARK		



LOCATION SKETCH
 (Location of landmark indicated by "x")



This space for copy of field notes or ties to the above described landmarks



FILED UNDER PROJECT	RECEIVED AT LINCOLN COUNTY COURTHOUSE THIS 17 DAY OF 1997		COUNTY CLERK'S OFFICE
DISTRICT OFFICE NUMBER	CITY	STATE	COUNTY OF WISCONSIN } SS
LOCATED OR ESTABLISHED BY	DATE RECEIVED FOR RECORD	DATE COPY SENT TO COUNTY SURVEYOR	
NAME OF <i>Patricia</i>	SIGNATURE OF COUNTY CLERK <i>Patricia</i>		
TITLE TAX DESCRIPTION OFFICE	DATE <i>4-17-1997</i> Property TAX Coordinator		

CERTIFIED LAND CORNER RESTORATION

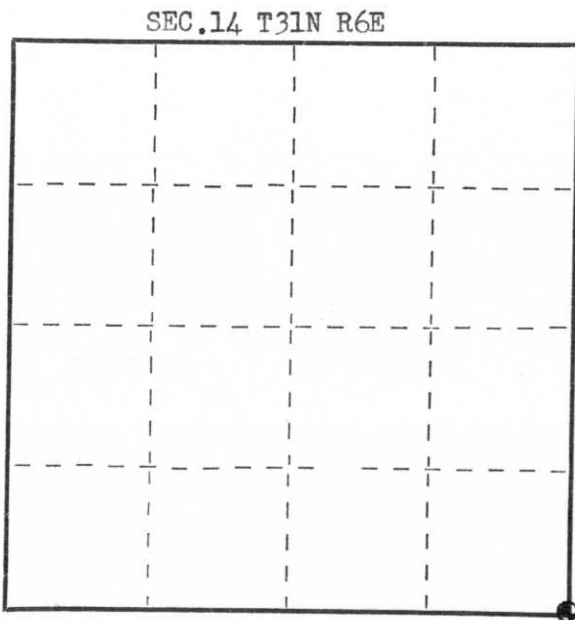
Index No. M-21

State of Wisconsin }
County of Lincoln } ss.

I Edwin R. Abendroth, do hereby certify that on the 10th day of Sept., 1976, I found evidence of the SE corner of Section 14 Township 31 6 E, North, Range 6 E, Fourth, Principal Meridian, as described hereon; and that from this evidence I established a new monument and accessories as described hereon to perpetuate the original location of this corner.

Resident witnesses:

.....
.....
.....



○ = Corner monument restored.

History of original corner establishment:

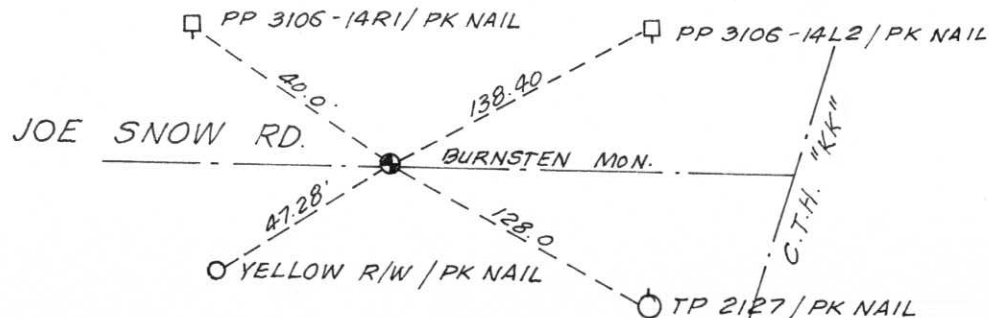
Wooden Post was established at the corner location as the result of the original Gov't. survey. No positive evidence of the original corner was discovered.

A stone monument was established during a remonumentation program. We did not find any evidence of this stone monument.

Description of corner evidence found:

As we excavated with the backhole we uncovered several broken, rotted pieces of an old wood post. We also discovered broken pieces of crockery scattered about the excavation site. However We were unable to determine the source of this material. We made the determination that the corner was lost.

Description of monument and accessories I established to perpetuate the original location of this corner.



Dated at Wausau, Wis., this 20th day of September, 1976

Signature Edwin R. Abendroth Title Reg. Land Surveyor Registration No. S-798
(County Surveyor, Registered Land Surveyor, or other duly authorized official)

Office of Register of Deeds, County of Lincoln, I hereby certify that the within instrument was filed in this office for record on the _____ day of _____, 19____ at _____ o'clock _____ M.

(Register of Deeds)

By _____ Deputy

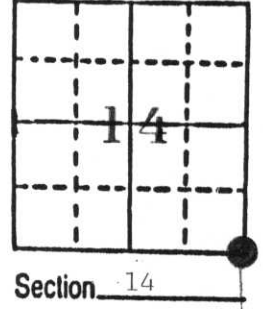
U.S. PUBLIC LAND SURVEY MONUMENT RECORD

Note: This form is intended and designed to fulfill all requirements of Wisconsin Administrative Code, Chapter A-E 5.02, U.S. Public Land Survey Monument Record (3) (a) (b) (c) (d) (e) (f) (g) (h) (i). An additional sheet may be added if necessary to conform with said requirements.

(a) Corner location: Township 31 North
 Range 6 East

Town Merrill

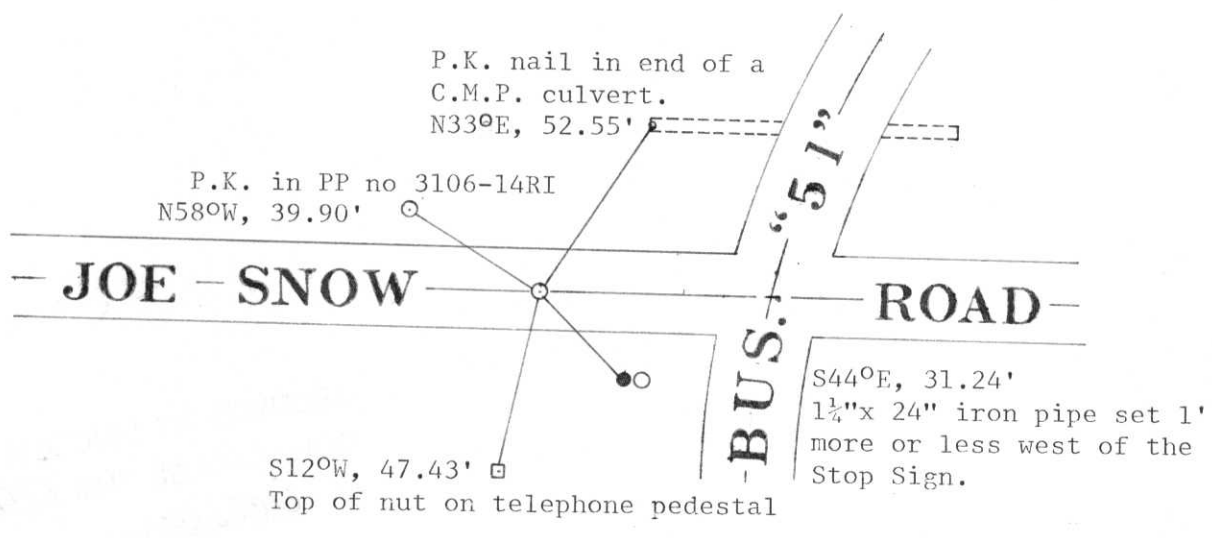
County Lincoln



b) (f) (g) (h) Description of monument found at this corner and if it was accepted, state all evidence (material, testimonial, occupational, plats, records, other monuments) used as a basis for accepting. If not accepted or if nothing was found, state evidence used as basis for establishing location. If reestablished through lost corner proportionate methods, indicate all monuments, distances and directions used to establish.

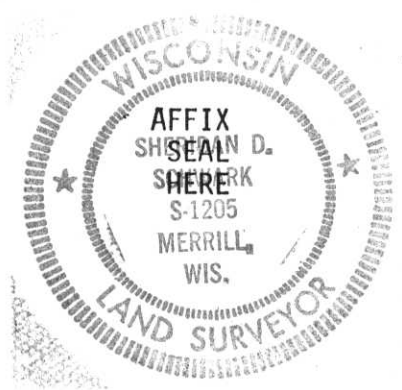
The Lincoln County Berntsen Monument which marks this corner was placed by Ed Abendroth, Registered Land Surveyor, on Sept. 20, 1976. When we attempted to use this corner we found that the corner was still in place approximately 1' under the road surface, however three of the references had been destroyed. Therefore we established the following references for the already existant corner.

c) (d) (e) Plan view of corner with ties to at least 4 witness monuments. If in disagreement with previously established corner, show the distances between the two corners and also indicate the ties to the disputed corner.



(i) I, Sheridan D. Schwark
 (type or print name) certify that the corner location on this record was determined by me or under my direction and control and that this U.S. Public Land Survey Monument Record is correct and complete to the best of my knowledge and belief.

Sheridan D. Schwark Signature
 October 3, 1985 Date



Index No. M-21