

# U.S. PUBLIC LAND SURVEY MONUMENT RECORD

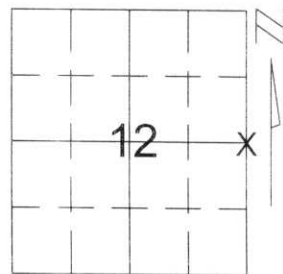
Note: This form is intended and designed to fulfill all requirements of Wisconsin Administrative Code, Chapter A-E 5.02, U.S. Public Land Survey Monument Record (3)(a)(b)(c)(d)(e)(f)(g)(h)(i). An additional sheet may be added if necessary to conform with said requirements.

(a) Corner location: Township 31 North

Range 6 East

Town/City/Village MERRILL

County LINCOLN



Section 12

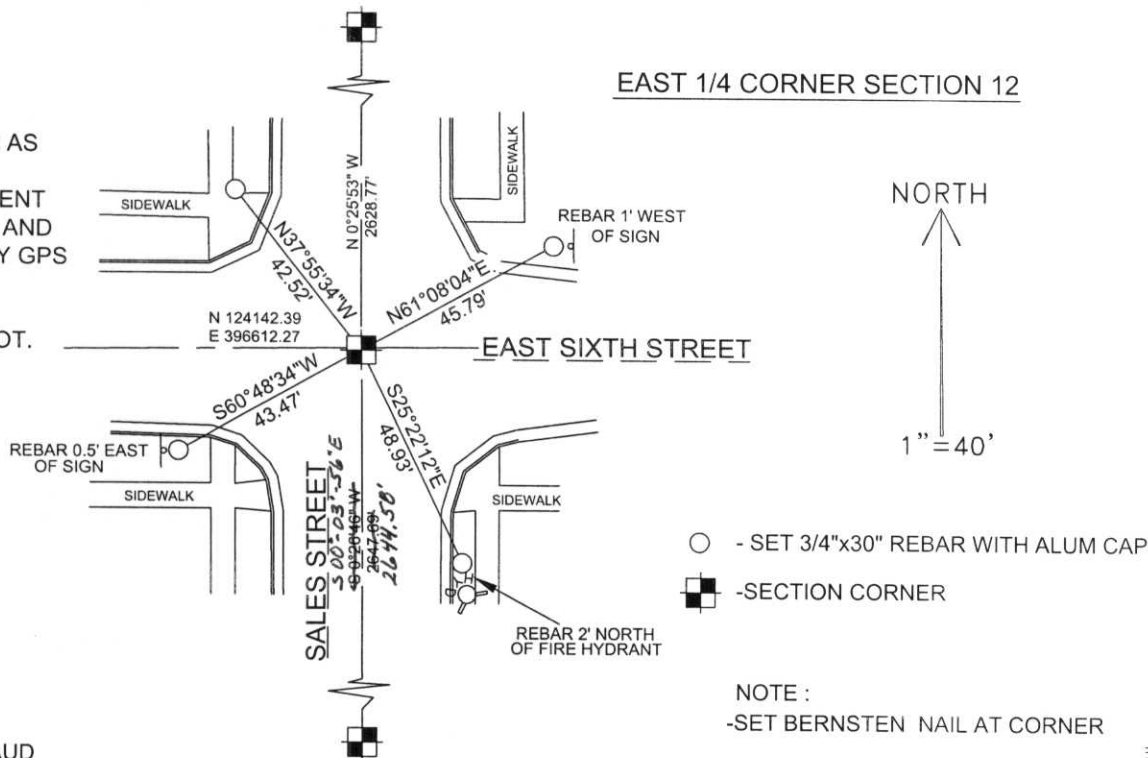
(b)(f)(g)(h) Description of monument found at this corner and if it was accepted, state all evidence (material, testimonial, occupational, plats, records, other monuments) used as a basis for accepting. If not accepted or if nothing was found, state evidence used as basis for establishing location. If reestablished through lost corner proportionate methods, indicate all monuments, distances and directions used to establish.

I MEASURED EXTENSIVELY THROUGHOUT SECTIONS 12 AND SECTION 7 TO THE EAST. THE CORNERS ALONG THE NORTH LINE OF THESE SECTIONS ARE IN AND ARE ACCEPTED. THE MAIN EVIDENCE LEFT OF THE ORIGINAL LOCATION OF THIS CORNER ARE THE CENTERLINES OF STREETS THROUGHOUT THESE SECTIONS WHICH GENERALLY FALL ALONG 1/16TH LINES. I FOUND THAT THE LOCATION OF THESE CENTERLINES FIT VERY WELL TO EACH OTHER AS WELL AS THE ORIGINAL GOVERNMENT SURVEY OF SECTIONS 12 AND 7. I ACCEPTED THE CENTERLINE-CENTERLINE INTERSECTION OF SALES STREET AND EAST 6TH STREET TO BE THE BEST AVAILABLE EVIDENCE OF THE CORNER'S ORIGINAL LOCATION.

RECEIVED AT LINCOLN COUNTY  
COURTHOUSE THIS 23<sup>RD</sup> DAY  
OF July 20 01  
Tony Dallen  
LAND INFORMATION OFFICE

(c)(d)(e) Plan view of corner with ties to at least 4 witness monuments. If in disagreement with previously established corner, show the distances between the two corners and also indicate the ties to the disputed corner.

COORDINATES AND BEARINGS ARE REFERENCED TO THE LINCOLN COUNTY COORDINATE SYSTEM AS DEVELOPED BY THE WISCONSIN DEPARTMENT OF TRANSPORTATION AND WERE DETERMINED BY GPS OBSERVATIONS ON CONTROL POINTS AS SUPPLIED BY THE WDOT.



(i) I, DAVID A. RENAUD  
(type or print name) certify that the corner location on this record was determined by me or under my direction and control and that this U.S. Public Land Survey Monument Record is correct and complete to the best of my knowledge and belief.

David A. Renaud 6/25/01  
Signature Revised 12/13/01 ARD Date



Index No. 6-25