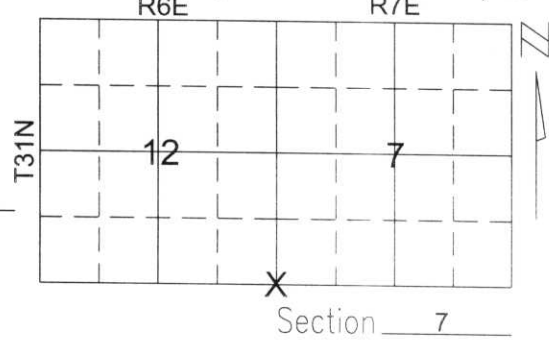


# U.S. PUBLIC LAND SURVEY MONUMENT RECORD

Note: This form is intended and designed to fulfill all requirements of Wisconsin Administrative Code, Chapter A-E 5.02, U.S. Public Land Survey Monument Record (3)(a)(b)(c)(d)(e)(f)(g)(h)(i). An additional sheet may be added if necessary to conform with said requirements.

(a) Corner location: Township 31 North  
 Range 7 East  
 Town/City/Village MERRILL  
 County LINCOLN



(b)(f)(g)(h) Description of monument found at this corner and if it was accepted, state all evidence (material, testimonial, occupational, plats, records, other monuments) used as a basis for accepting. If not accepted or if nothing was found, state evidence used as basis for establishing location. If reestablished through lost corner proportionate methods, indicate all monuments, distances and directions used to establish.

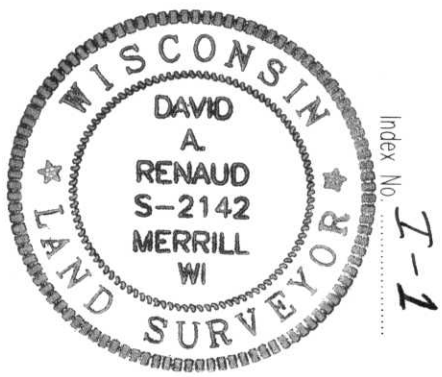
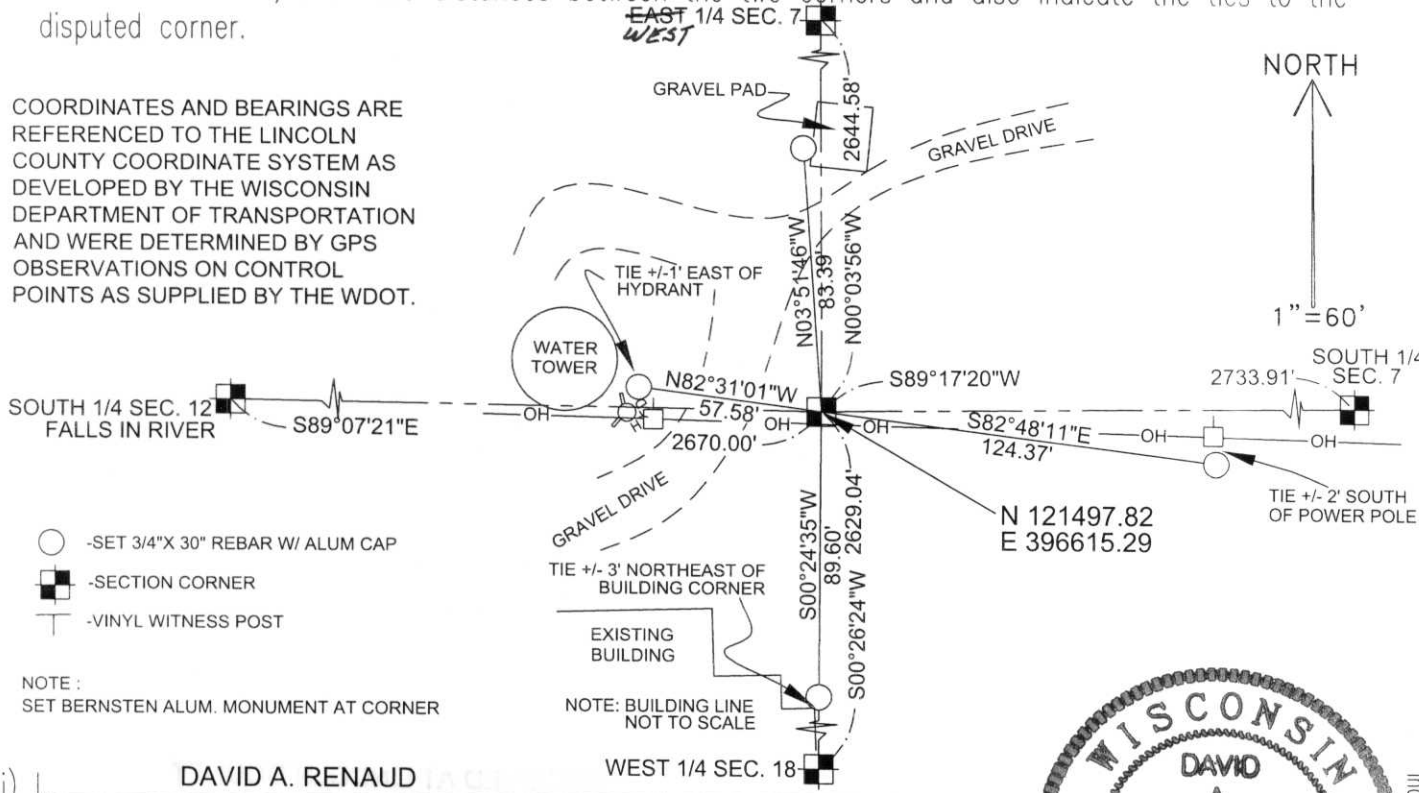
I MEASURED EXTENSIVELY THROUGHOUT SECTIONS 12 AND SECTION 7 TO THE EAST. THE CORNERS ALONG THE NORTH LINE OF THESE SECTIONS ARE IN AND ARE ACCEPTED. THE MAIN EVIDENCE LEFT OF THE ORIGINAL LOCATION OF THIS CORNER ARE THE CENTERLINES OF STREETS THROUGHOUT THESE SECTIONS WHICH GENERALLY FALL ALONG 1/16TH LINES. I FOUND THAT THE LOCATION OF THESE CENTERLINES FIT VERY WELL TO EACH OTHER AS WELL AS THE ORIGINAL GOVERNMENT SURVEY OF SECTIONS 12 AND 7. I FOUND AN OLD RAILROAD RIGHT-OF-WAY PLAT DATED FROM 1917 THAT SHOWS THIS CORNER TO BE 196.4 FEET SOUTH OF THE INTERSECTION OF SALES STREET AND THE MAINLINE RAILROAD TRACK. I ALSO FOUND AN UNRECORDED ASSESSOR'S PLAT AT THE CITY OF MERRILL ENGINEERING DEPARTMENT THAT SHOWS THE SECTION LINE TO BE 470 FEET WEST OF A FOUND IRON PIPE ON THE SOUTH LINE OF MAIN ST. THIS IRON PIPE IS WITHIN 1 FOOT OF THE EXISTING CENTERLINE OF SALES ST. NORTH OF MAIN ST. I ACCEPTED THE CENTERLINE OF SALES STREET LYING NORTH OF MAIN ST. EXTENDED SOUTH AS THE EAST & WEST LOCATION OF THE CORNER. I ACCEPTED THE RAILROAD RIGHT-OF-WAY PLAT AS THE BEST AVAILABLE EVIDENCE OF THE CORNER'S NORTH & SOUTH LOCATION AS LITTLE OR NO OCCUPATIONAL EVIDENCE OR OTHERWISE EXISTS ALONG THE SOUTH LINES OF SECTIONS 12 & 7.

**NOTE!** THIS SHEET AND THE LOCATION OF THE SECTION CORNER AS SHOWN HEREON IS INTENDED TO CORRECT AND SUPERCEDE THE LOCATION OF THIS CORNER AS SHOWN BY THE U.S. PUBLIC LAND SURVEY MONUMENT RECORD DATED JUNE 25, 2001 AND FILED WITH THE LINCOLN COUNTY SURVEYOR'S OFFICE ON MYSELF. THE JUNE 25TH SHEET LOCATED THE CORNER'S EAST AND WEST POSITION OFF THE CENTERLINE OF SALES ST. SOUTH OF MAIN ST., WHICH IS INCORRECT.

D.A.R. **DR**

(c)(d)(e) Plan view of corner with ties to at least 4 witness monuments. If in disagreement with previously established corner, show the distances between the two corners and also indicate the ties to the disputed corner.

COORDINATES AND BEARINGS ARE REFERENCED TO THE LINCOLN COUNTY COORDINATE SYSTEM AS DEVELOPED BY THE WISCONSIN DEPARTMENT OF TRANSPORTATION AND WERE DETERMINED BY GPS OBSERVATIONS ON CONTROL POINTS AS SUPPLIED BY THE WDOT.



(i) I, DAVID A. RENAUD  
 (type or print name) certify that the corner location on this record was determined by me or under my direction and control and that this U.S. Public Land Survey Monument Record is correct and complete to the best of my knowledge and belief.

David A. Renaud December 12, 2001  
 Signature Date