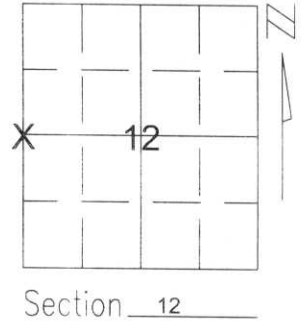


# U.S. PUBLIC LAND SURVEY MONUMENT RECORD

Note: This form is intended and designed to fulfill all requirements of Wisconsin Administrative Code, Chapter A-E 5.02, U.S. Public Land Survey Monument Record (3)(a)(b)(c)(d)(e)(f)(g)(h)(i). An additional sheet may be added if necessary to conform with said requirements.

(a) Corner location: Township 31 North  
 Range 6 East

Town/City/Village MERRILL  
 County LINCOLN



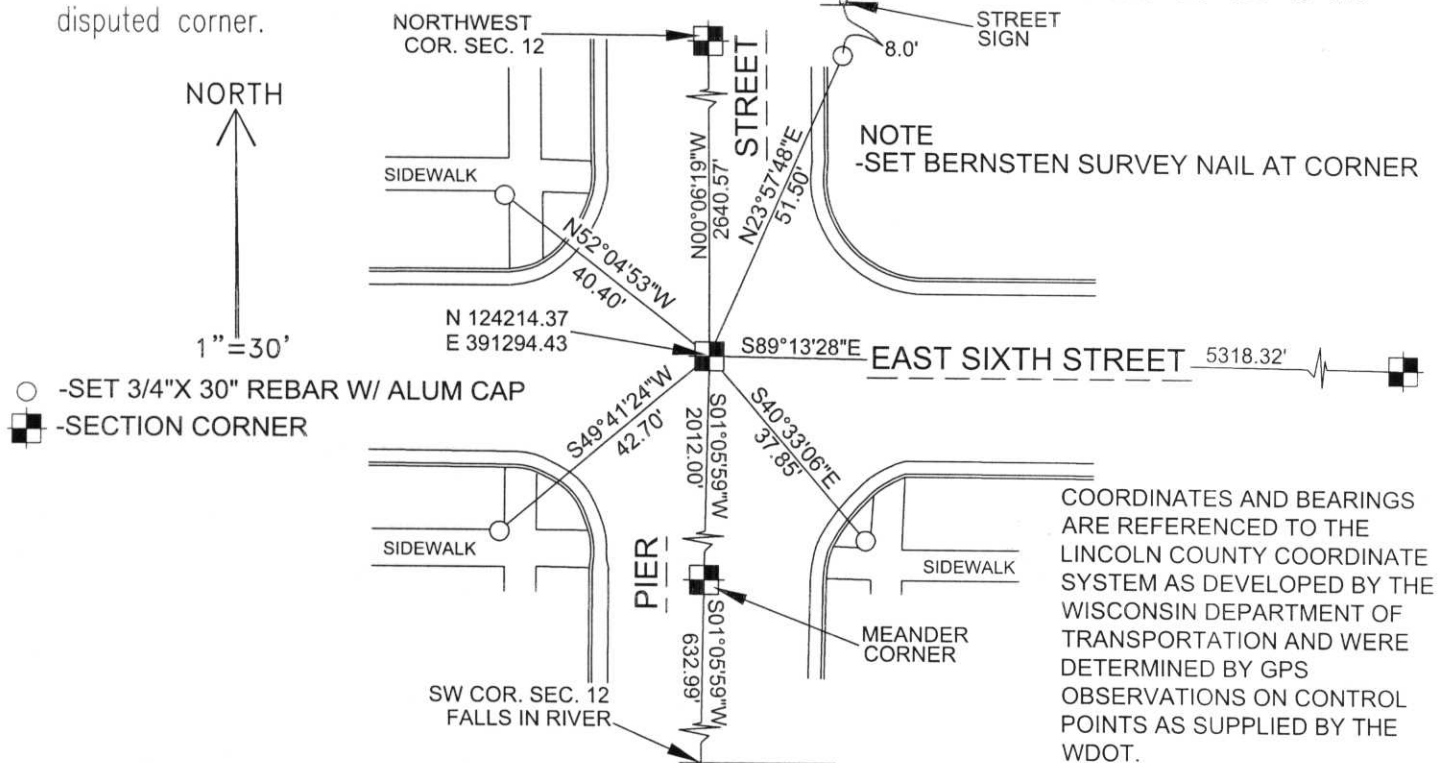
Section 12

(b)(f)(g)(h) Description of monument found at this corner and if it was accepted, state all evidence (material, testimonial, occupational, plats, records, other monuments) used as a basis for accepting. If not accepted or if nothing was found, state evidence used as basis for establishing location. If reestablished through lost corner proportionate methods, indicate all monuments, distances and directions used to establish.

I MEASURED EXTENSIVELY THROUGHOUT SECTION 12. THE CORNERS ALONG THE NORTH LINE OF THIS SECTION ARE IN AND ARE ACCEPTED. THE MAIN EVIDENCE LEFT OF THE ORIGINAL LOCATION OF THIS CORNER ARE THE CENTERLINES OF STREETS THROUGHOUT THIS SECTION WHICH GENERALLY FALL ALONG 1/16TH LINES. I FOUND THAT THE LOCATION OF THESE CENTERLINES FIT VERY WELL TO EACH OTHER AS WELL AS THE ORIGINAL GOVERNMENT SURVEY OF SECTION 12. I ACCEPTED THE CENTERLINE-CENTERLINE INTERSECTION OF PIER STREET AND EAST 6TH STREET TO BE THE BEST AVAILABLE EVIDENCE OF THE CORNER'S ORIGINAL LOCATION.

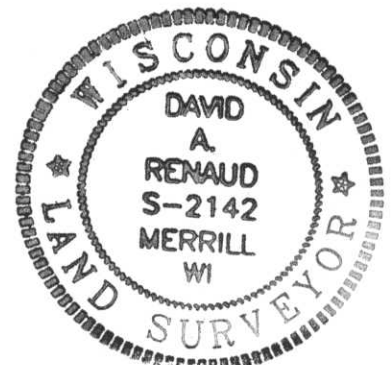
RECEIVED AT LINCOLN COUNTY  
 COURTHOUSE THIS 23<sup>RD</sup> DAY  
 OF July 20 01  
*Tom Dabner*  
 LAND INFORMATION OFFICE

(c)(d)(e) Plan view of corner with ties to at least 4 witness monuments. If in disagreement with previously established corner, show the distances between the two corners and also indicate the ties to the disputed corner.



(i) I, David A. Renaud, WI R.L.S. S-2142  
 (type or print name) certify that the corner location on this record was determined by me or under my direction and control and that this U.S. Public Land Survey Monument Record is correct and complete to the best of my knowledge and belief.

*David A. Renaud* 6/25/01  
 Signature Date



Index No. 6-21