

CERTIFIED LAND CORNER RESTORATION

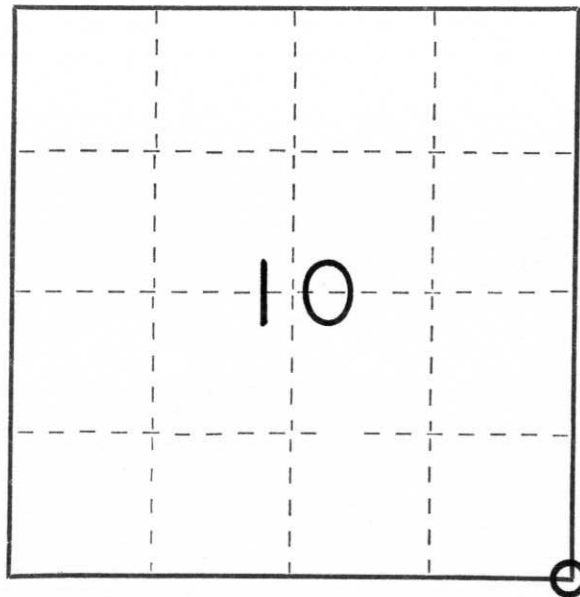
Index No. I-17

State of Wisconsin }  
County of Lincoln } ss.

I Sheridan D. Schwark, do hereby certify that on the 30th day of June, 1978, I found evidence of the Southeast corner of Section 10 Township 31, North, Range 6 East, Fourth, Principal Meridian, as described hereon; and that from this evidence I established a new monument and accessories as described hereon to perpetuate the original location of this corner.

Resident witnesses:

.....  
.....  
.....



○ = Corner monument restored.

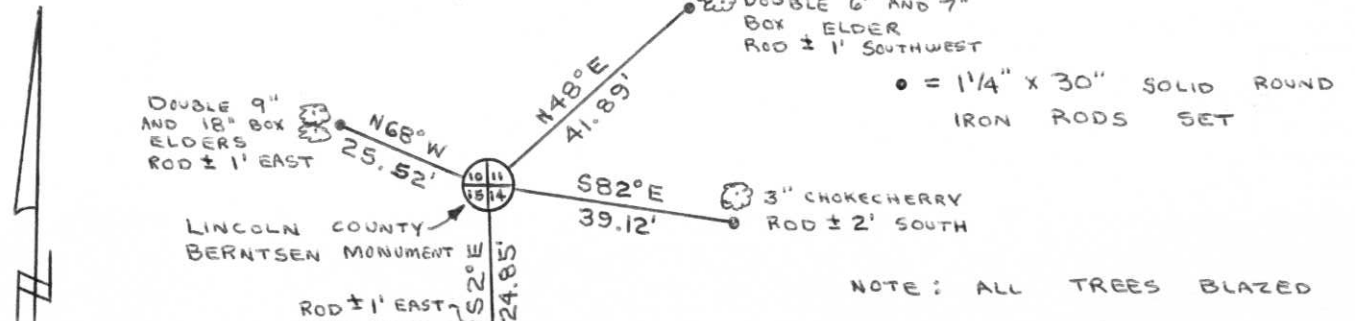
History of original corner establishment:

Date: March, 1852  
Surveyor: A.G. & F.S. Ellis  
Monument: Wood post  
Witnesses: 8" Ironwood, S40°E, 20 links  
14" Elm, N58°W, 23 links

Description of corner evidence found:

We reestablished the corner by doubling the distance between the S 1/4 corner and the 1/16th corner on a straight line. The 1/16 corner was reestablished using an old set of reference measurements found in the City Engineer's office taken by George Sturdevant - the surveyor who surveyed J.M. Smith & Co.s Third Addition.

Description of monument and accessories I established to perpetuate the original location of this corner.



NOTE: ALL TREES BLAZED

Dated at MERRILL, Wis., this 7th day of AUGUST, 1978.

Signature Sheridan D. Schwark Title Registered Land Surveyor Registration No. S-1205  
(County Surveyor, Registered Land Surveyor, or other duly authorized official)

Office of Register of Deeds, County of \_\_\_\_\_, I hereby certify that the within instrument was filed in this office for record on the \_\_\_\_\_ day of \_\_\_\_\_, 19\_\_\_\_ at \_\_\_\_\_ o'clock \_\_\_\_\_ M.

(Register of Deeds)

By \_\_\_\_\_ Deputy