

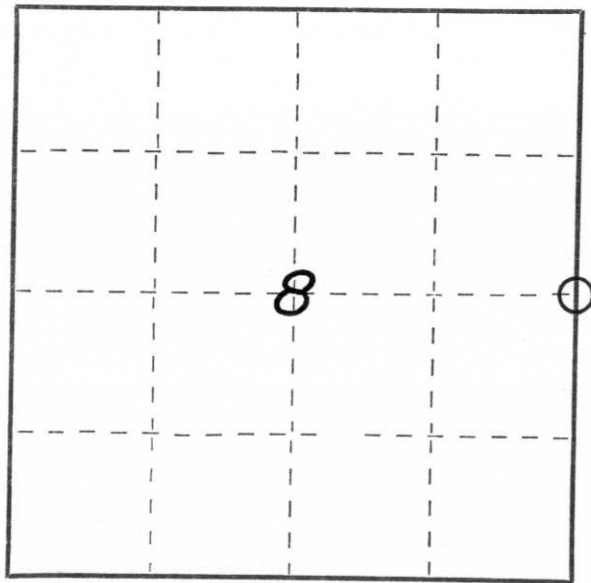
CERTIFIED LAND CORNER RESTORATION

Index No. G-9

State of Wisconsin }  
 County of Lincoln } ss.

I Sheridan D. Schwark, do hereby certify that on the 6th day of July, 1979, I found evidence of the east one-quarter corner of Section 8 Township 31 North, Range 6 East, Fourth, Principal Meridian, as described hereon; and that from this evidence I established a new monument and accessories as described hereon to perpetuate the original location of this corner.

Resident witnesses:  
 \_\_\_\_\_  
 \_\_\_\_\_  
 \_\_\_\_\_



○ = Corner monument restored.

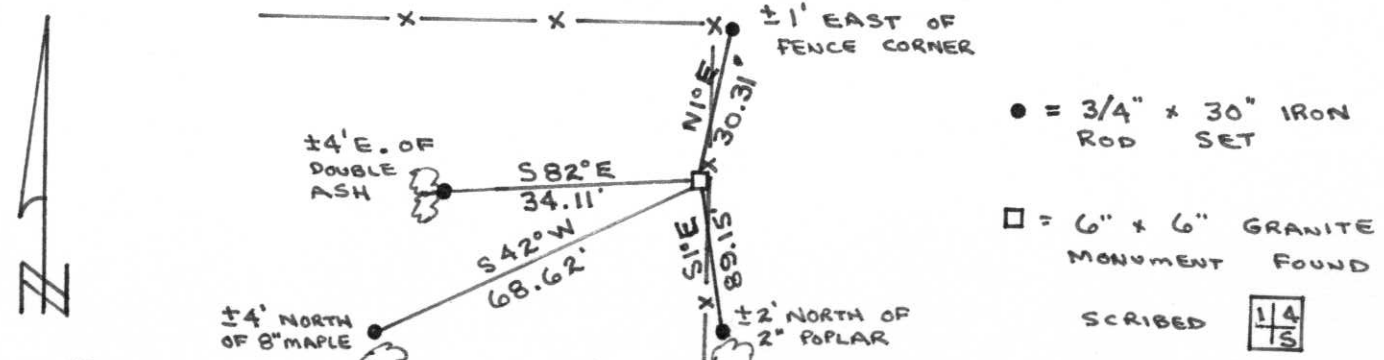
History of original corner establishment:

Date: March 1852  
 Surveyor: A.G. & F.S. Ellis  
 Monument: Wood Post  
 Witnesses: 10" Hemlock N87E 20 links  
               10" Hemlock N62W 21 links

Description of corner evidence found:

About 30 feet south of a fence corner and on the southwest side of the second post from the corner we found a 6"x6" granite monument, somewhat tipped. We set it upright and mounded rocks and sod around it. Adjacent landowner Roth said the stone is in its original position. It was initially set by Louis Kleindschmidt in 1903. His map is on record in the Lincoln County Register of Deeds Office.

Description of monument and accessories I established to perpetuate the original location of this corner.



Dated at Wausau, Wis., this 13th day of August, 1979.

Signature Sheridan D. Schwark Title Registered Land Surveyor Registration No. S-1205  
 (County Surveyor, Registered Land Surveyor, or other duly authorized official)

Office of Register of Deeds, County of \_\_\_\_\_, I hereby certify that the within instrument was filed in this office for record on the \_\_\_\_\_ day of \_\_\_\_\_, 19\_\_\_\_ at \_\_\_\_\_ o'clock \_\_\_\_\_ M.

\_\_\_\_\_  
 (Register of Deeds)  
 By \_\_\_\_\_ Deputy