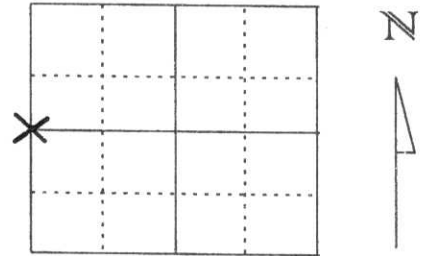


U.S. PUBLIC LAND SURVEY MONUMENT RECORD

Note: This form is intended and designed to fulfill all requirements of Wisconsin Administrative Code, Chapter A-E 5.02, U.S. Public Land Survey Monument Record (3) (a) (b) (c) (d) (e) (f) (g) (h) (i). An additional sheet may be added if necessary to conform with said requirements.

(a) Corner location: Township 31 North
 Range 6 East
 Town/City/Village MERRILL
 County Lincoln

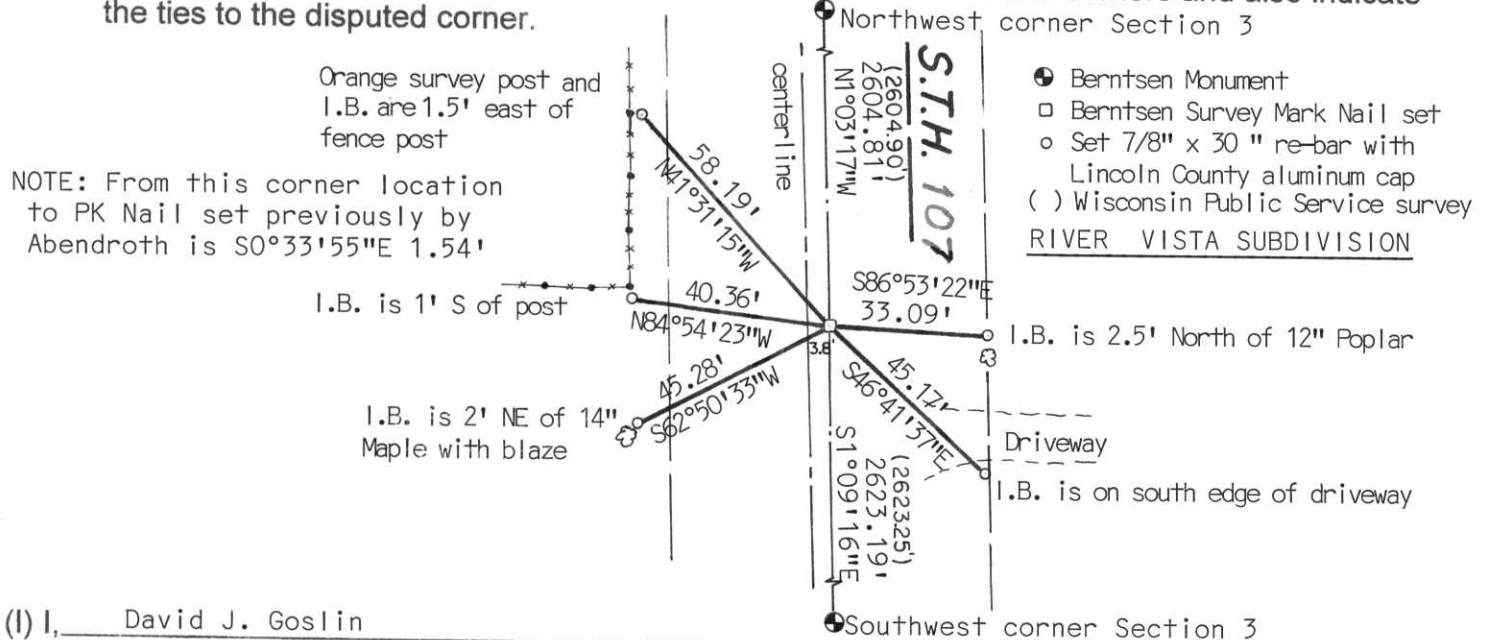


Section 3

(b) (f) (g) (h) Description of monument found at this corner and if it was accepted, state all evidence (material, testimonial, occupational, plats, records, other monuments) used as a basis for accepting. If not accepted or if nothing was found, state evidence used as basis for establishing location. If reestablished through lost corner proportionate methods, indicate all monuments, distances and directions used to establish.

Corner had been described as a 1" iron pipe on a survey by Wisconsin Public Service and a Subdivision named River Vista and other surveys in the area. Edwin Abendroth S-798 re-set this corner after 1" iron pipe was destroyed. He reestablished corner using River Vista Plat and set PK Nail. We found PK Nail but felt nail was not in the right location. We also tied into River Vista Plat to establish this corner and found it should move 1.54 feet north of PK Nail. Our new location matched distances from the plat of survey by Wisconsin Public Service Corp. of Section 4, T31N, R6E. Accepted our new location as the location of the West $\frac{1}{4}$ corner as monumented by the 1" iron pipe.

(c) (d) (e) Plan view of corner with ties to at least 4 witness monuments. If in disagreement with previously established corner, show the distances between the two corners and also indicate the ties to the disputed corner.



(i) I, David J. Goslin
 (type or print name) certify that the corner location on this record was determined by me or under my direction and control and that this U.S. Public Land Survey Monument Record is correct and complete to the best of my knowledge and belief.

David J. Goslin
 Signature



May 8, 2001

RECEIVED AT LINCOLN COUNTY
 COURT HOUSE THIS 10 DAY
 OF May 2001
Tony Dallman
 LAND INFORMATION OFFICE

Index No. 2-13

U.S. PUBLIC LAND SURVEY MONUMENT RECORD

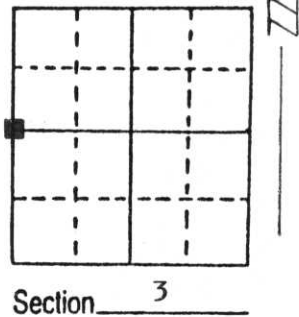
Note: This form is intended and designed to fulfill all requirements of Wisconsin Administrative Code, Chapter A-E 5.02, U.S. Public Land Survey Monument Record (3) (a) (b) (c) (d) (e) (f) (g) (h) (i). An additional sheet may be added if necessary to conform with said requirements.

(a) Corner location: Township 31 North

Range 6 East

Town/City/Village MERRILL

County LINCOLN



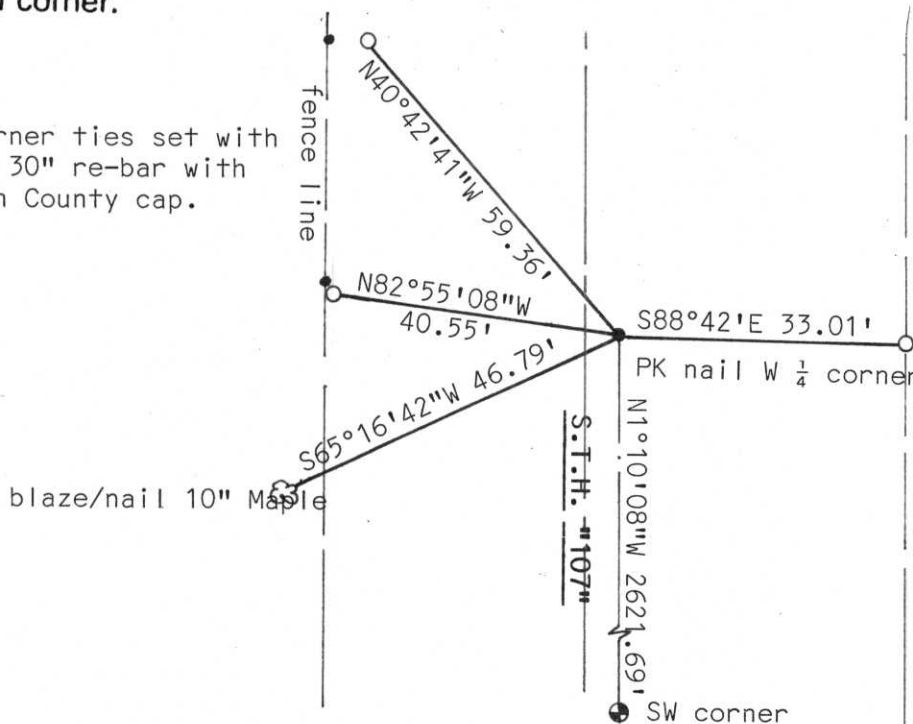
(b) (f) (g) (h) Description of monument found at this corner and if it was accepted, state all evidence (material, testimonial, occupational, plats, records, other monuments) used as a basis for accepting. If not accepted or if nothing was found, state evidence used as basis for establishing location. If reestablished through lost corner proportionate methods, indicate all monuments, distances and directions used to establish.

Measured from recorded subdivision "River Vista" to corner location and found magnetic response under pavement Highway 107. Checked distance to SW corner Section 3 from map by Public Service Co. map. Distance checked favorably 2623.25' record and 2621.69' measured.
Set PK nail and tied corner.

**RECEIVED AT LINCOLN COUNTY
COURTHOUSE THIS 28th DAY
OF Sept. 19 95
Pat Priebe
TAX DESCRIPTION OFFICE**

(c) (d) (e) Plan view of corner with ties to at least 4 witness monuments. If in disagreement with previously established corner, show the distances between the two corners and also indicate the ties to the disputed corner.

All corner ties set with 3/4" X 30" re-bar with Lincoln County cap.



(i) I, Edwin R. Abendroth RLS S-798 9-26-95

(type or print name) certify that the corner location on this record was determined by me or under my direction and control and that this U.S. Public Land Survey Monument Record is correct and complete to the best of my knowledge and belief.

Edwin R. Abendroth 9-26-95

Signature

Date



Index No. 4-13



24 2:21 PM



24 2:20 PM



24 2:21 PM