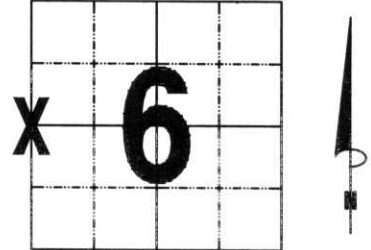


# U.S. PUBLIC LAND SURVEY MONUMENT RECORD

NOTE: THIS FORM IS INTENDED AND DESIGNED TO FULFILL ALL REQUIREMENTS OF WISCONSIN ADMINISTRATIVE CODE, CHAPTER LAND SURVEY MONUMENT RECORD (3) (a) (b) (c) (d) (e) (f) (g) (h) (i). AN ADDITIONAL SHEET MAY BE ADDED IF NECESSARY TO CONFORM WITH SAID REQUIREMENTS. A-E 7.06 U.S. PUBLIC

(a) CORNER LOCATION: TOWNSHIP 31 NORTH  
 RANGE 7 EAST/WEST  
 TOWN/CITY/VILLAGE MERRILL  
 COUNTY LINCOLN



SECTION 6

(b) (f) (g) (h) DESCRIPTION OF MONUMENT FOUND AT THIS CORNER AND IF IT WAS ACCEPTED, STATE ALL EVIDENCE (MATERIAL, TESTIMONIAL, OCCUPATIONAL, PLATS, RECORDS, OTHER MONUMENTS) USED AS BASIS FOR ACCEPTING. IF NOT ACCEPTED OR IF NOTHING WAS FOUND, STATE EVIDENCE USED AS BASIS FOR ESTABLISHING LOCATION. IF REESTABLISHED THROUGH LOST CORNER PROPORTIONATE METHODS, INDICATE ALL MONUMENTS, DISTANCES AND DIRECTIONS USED TO ESTABLISH. INDICATE TYPE OF MONUMENT FOUND OR SET AND SIGN POST.

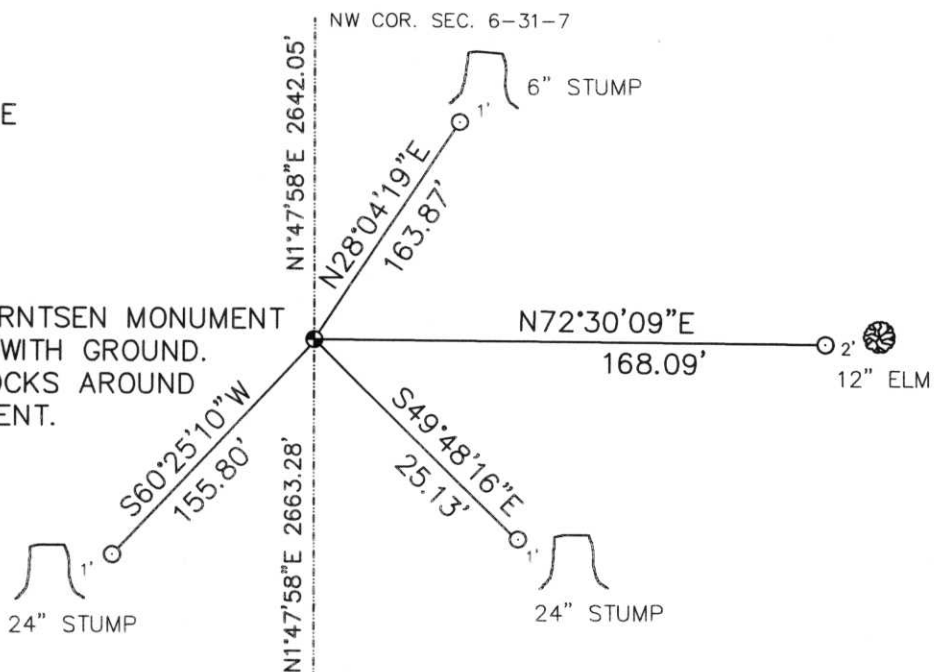
THIS CORNER FALLS IN THE OLD WARD PAPER MILL, MILL POND. I DID SEVERAL SURVEYS ON LANDS EAST OF HERE, AND THERE WERE IRONS SET ON THE EAST WEST 1/4 LINE. I TIED INTO SEVERAL OF THESE IRONS, ON AN OLD EAST WEST FENCE HEDGE LINE, EXTENDED IT TO THE INTERSECTION WITH A STRAIGHT LINE FROM THE SOUTHWEST CORNER TO THE NORTHWEST CORNER. THIS MATCHED THE PAPER CORNER THAT ABENDROTH HAS ON HIS SECTION SUMMARY, WITHIN LESS THAN A FOOT. HELD THIS FOR CORNER. SEARCHED EXISTING STUMPS AROUND SITE FOR BT MARKS, FOUND NONE. SEARCHED AREA WITH MAGNETIC LOCATOR, FOUND NOTHING.

SET LINCOLN COUNTY BERNTSEN MONUMENT, PUT MOUND OF ROCKS AROUND MONUMENT. SET CARSONITE SIGN ON NORTH SIDE. TIED OUT.

(c) (d) (e) PLAN VIEW OF CORNER WITH TIES TO AT LEAST 4 WITNESS MONUMENTS. IF IN DISAGREEMENT WITH PREVIOUSLY ESTABLISHED CORNER, SHOW THE DISTANCES BETWEEN THE TWO CORNERS AND ALSO INDICATE THE TIES TO THE DISPUTED CORNER.

ALL WITNESS CORNERS ARE  
 3/4" x 30" REBAR WITH  
 ALUMINUM CAP

SET BERNTSEN MONUMENT  
 FLUSH WITH GROUND.  
 PUT ROCKS AROUND  
 MONUMENT.



RECEIVED AT LINCOLN COUNTY  
 COURTHOUSE THIS 12 DAY  
 OF June 2000  
*Tony Dallman*  
 LAND INFORMATION OFFICE

(i) I, DAVID L. OSTERBRINK RLS NO. S-2014  
 (TYPE OR PRINT NAME) CERTIFY THAT THE CORNER  
 LOCATION ON THIS RECORD WAS DETERMINED BY ME  
 OR UNDER MY DIRECTION AND CONTROL AND THAT  
 THIS U.S. PUBLIC LAND SURVEY MONUMENT RECORD  
 IS CORRECT AND COMPLETE TO THE BEST OF MY  
 KNOWLEDGE AND BELIEF.

*David L. Osterbrink* 6-1-00  
 SIGNATURE DATE



INDEX NO. 4-1



19 3:45 PM



19 3:46 PM



19 3:47 PM