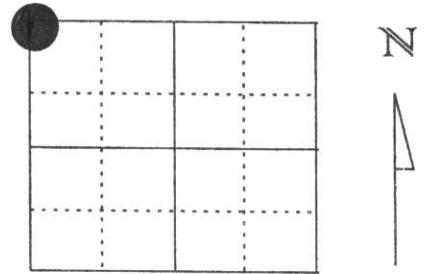


U.S. PUBLIC LAND SURVEY MONUMENT RECORD

Note: This form is intended and designed to fulfill all requirements of Wisconsin Administrative Code, Chapter A-E 5.02, U.S. Public Land Survey Monument Record (3) (a) (b) (c) (d) (e) (f) (g) (h) (l). An additional sheet may be added if necessary to conform with said requirements.

(a) Corner location: Township 31 North
 Range 7 East
 Town/City/Village CITY OF MERRILL
 County Lincoln



Section 7

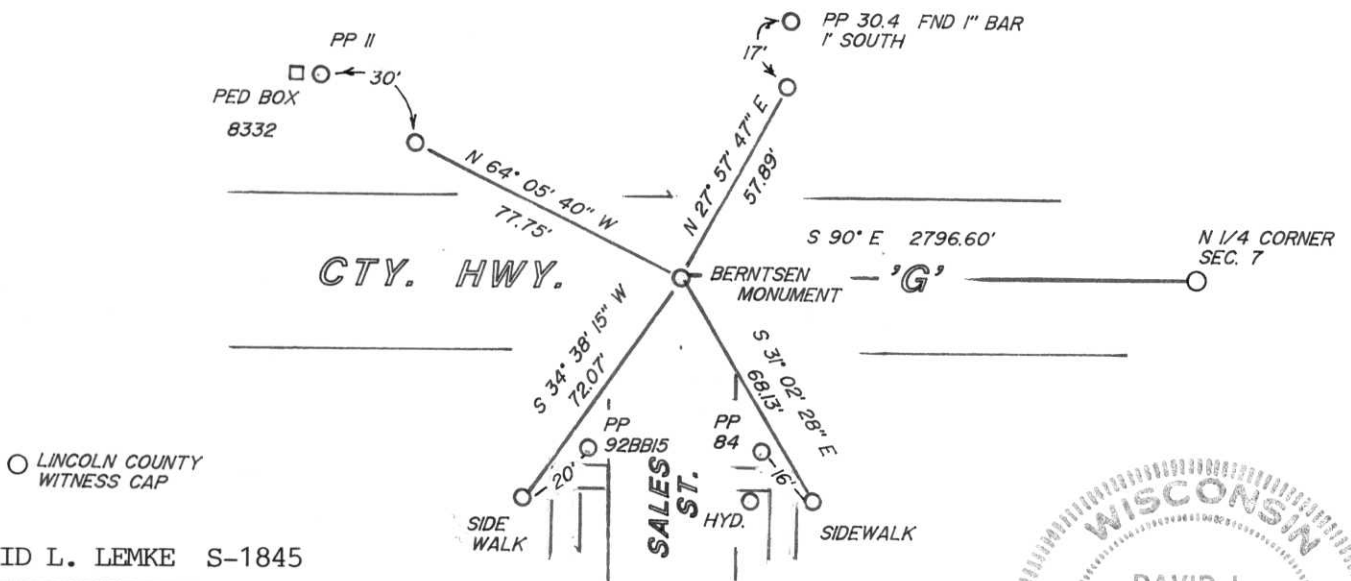
(b) (f) (g) (h) Description of monument found at this corner and if it was accepted, state all evidence (material, testimonial, occupational, plats, records, other monuments) used as a basis for accepting. If not accepted or if nothing was found, state evidence used as basis for establishing location. If reestablished through lost corner proportionate methods, indicate all monuments, distances and directions used to establish.

NOVEMBER 1977 SHERIDAN SCHWARK SET A BERNTSEN MONUMENT AT THE INTERSECTION OF HWY. 17 - CTY. HWY. 'G' - AND SALES STREET. 4 WITNESS TIES WERE ESTABLISHED TO THE CORNER POSITION.

I FOUND 3 OF THE WITNESS TIES SET BY SHERIDAN AND RESET 4 ADDITIONAL TO THE CORNER POSITION AS SHOWN.

**RECEIVED AT LINCOLN COUNTY
 COURTHOUSE THIS 10th DAY
 OF June 19 99
Pat Prude
LAND INFORMATION OFFICE**

(c) (d) (e) Plan view of corner with ties to at least 4 witness monuments. If in disagreement with previously established corner, show the distances between the two corners and also indicate the ties to the disputed corner.



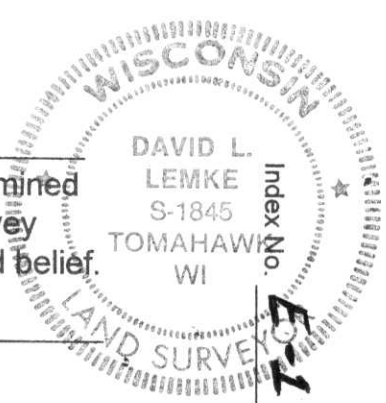
(l) I, DAVID L. LEMKE S-1845

(type or print name) certify that the corner location on this record was determined by me or under my direction and control and that this U.S. Public Land Survey Monument Record is correct and complete to the best of my knowledge and belief.

Signature

Date

JUNE 9, 1999



CERTIFIED LAND CORNER RESTORATION

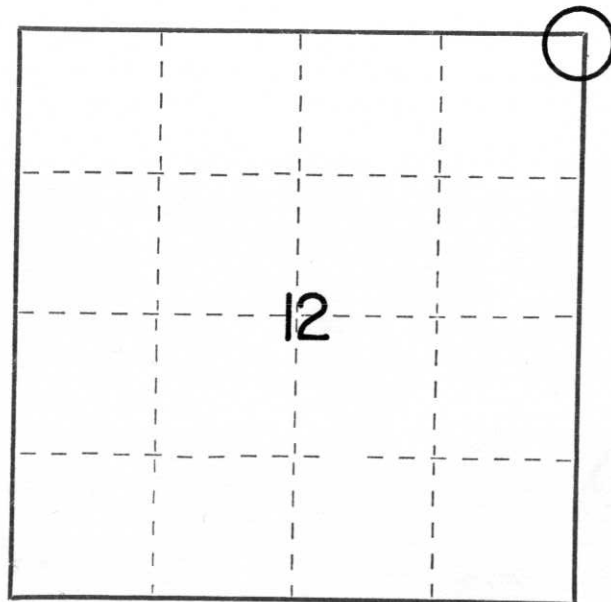
Index No. E-25

State of Wisconsin }
County of Lincoln } ss.

I Sheridan D. Schwark, do hereby
certify that on the 27th day
of November, 1977, I found
evidence of the northeast
corner of Section 12
Township 31, North, Range
6 East, Fourth, Principal Meridian,
as described hereon; and that from this evidence
I established a new monument and accessories
as described hereon to perpetuate the original
location of this corner.

Resident witnesses:

.....
.....
.....



○ = Corner monument restored.

History of original corner establishment:

Date: June, 1851
Surveyor: James M. Marsh
Monument: wood post
Witnesses: 12" birch, S68°E, 40 links
10" elm, S13°W, 10 links
10" hemlock, N22°W, 10 links
12" birch, N20°E, 19 links

Description of corner evidence found:

The Wisconsin Highway Division reworked the area in 1935 and found no evidence of any monuments. We reset the corner according to the Highway Division survey by William Kuldifff using improvement lines.

Description of monument and accessories I established to perpetuate the original location of this corner.

Set a Lincoln County Berntsen Monument in the intersection of S.T.H. "17" and Sales Street, with the following witness monuments:

- 3/4" x 30" round iron rod, \pm 1' south of P.P. no. 2375-5517, bearing N66°W, 108.02'
- " " " " " " " " " 30.4, bearing N22°E, 73.51'
- " " " " " east of a 4" white pine, bearing S38°W, 97.02'
- Center of the top nut of hydrant no. 307, bearing S25°E, 62.48'

Dated at MERRILL, Wis., this 28TH day of NOVEMBER, 1977.

Signature Sheridan D. Schwark Title Registered Land Surveyor Registration No. S-1205
(County Surveyor, Registered Land Surveyor, or other duly authorized official)

Office of Register of Deeds, County of _____, I hereby certify that the within
instrument was filed in this office for record on the _____ day of _____, 19____
at _____ o'clock _____ M.

.....
(Register of Deeds)

By _____ Deputy