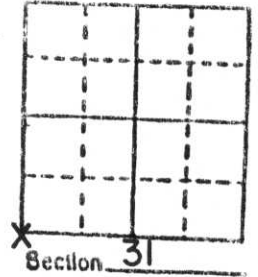


U.S. PUBLIC LAND SURVEY MONUMENT RECORD

Note: This form is intended and designed to fulfill all requirements of Wisconsin Administrative Code, Chapter A-E 5.02, U.S. Public Land Survey Monument Record (3) (a) (b) (c) (d) (e) (f) (g) (h) (i). An additional sheet may be added if necessary to conform with said requirements.

(a) Corner location: Township 31 North
 Range 6 East

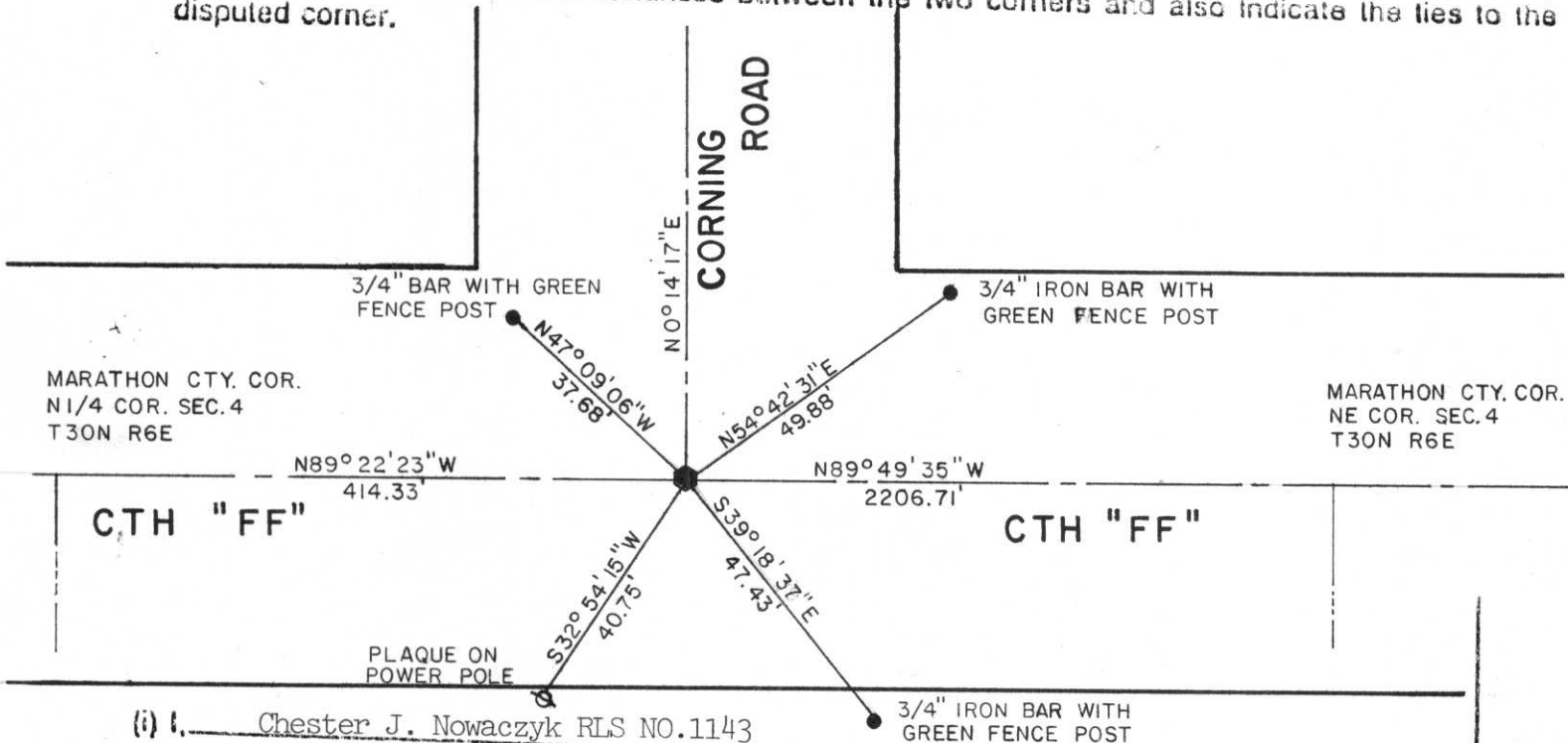
Town _____
 County LINCOLN



b) (f) (g) (h) Description of monument found at this corner and if it was accepted, state all evidence (material, testimonial, occupational, plats, records, other monuments) used as a basis for accepting. If not accepted or if nothing was found, state evidence used as basis for establishing location. If reestablished through lost corner proportionate methods, indicate all monuments, distances and directions used to establish.

Excavated for corner and found nothing. An extensive traverse was run along the County line locating all existing Marathon and Lincoln County corners. Fence lines were also located. The corner location was determined from this field work and comparing to original and re-monumentation notes.
 Set 1 3/16" iron bar 30" long.

c) (d) (e) Plan view of corner with ties to at least 4 witness monuments. If in disagreement with previously established corner, show the distances between the two corners and also indicate the ties to the disputed corner.



MARATHON CTY. COR.
 N1/4 COR. SEC. 4
 T30N R6E

MARATHON CTY. COR.
 NE COR. SEC. 4
 T30N R6E

(i) I, Chester J. Nowaczyk RLS NO. 1143
 (type or print name) certify that the corner location on this record was determined by me or under my direction and control and that this U.S. Public Land Survey Monument Record is correct and complete to the best of my knowledge and belief.

Chester J. Nowaczyk 11-2-90
 Signature Date



Index No. 2-1