

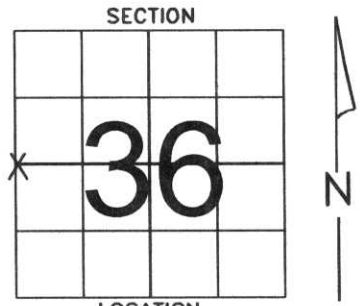
# LINCOLN COUNTY U.S. PUBLIC LAND SURVEY MONUMENT LOCATION RECORD

SECTION 36  
TOWNSHIP 31  
RANGE 5  
CORNING  
CITY, TOWN, VILLAGE

NO.  

LANDMARK       BENCHMARK  
CORNER IDENTITY: 6 X 6 LIMESTONE  
STATE PLANE COORDINATE    N: \_\_\_\_\_  
ZONE: \_\_\_\_\_      E: \_\_\_\_\_  
ELEVATION-(FEET): \_\_\_\_\_      DATUM: \_\_\_\_\_  
THETA ANGLE: \_\_\_\_\_      WEATHER: CLOUDY  
DATE OF SURVEY: 5/13/04      TEMPERATURE: 63° F  
SURVEY PARTY: KRUEGER, WADZINSKI

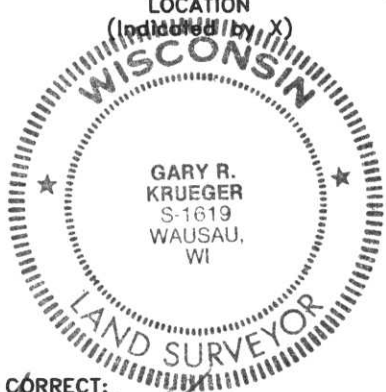
FOUND   
SET   
RE-SET   
RE-TIED



## BASIS FOR MONUMENT LOCATION:

(DESCRIBE METHOD OF SURVEY AND CORNER AUTHENTICATION)

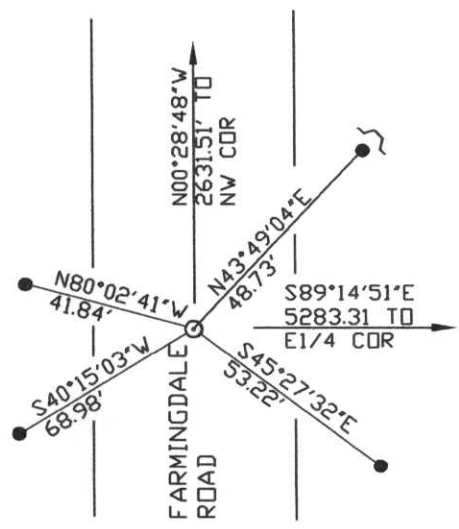
DUG FOR CORNER WITH BACKHOE, FOUND IT 2 FEET BELOW SURFACE, SET A RR SPIKE OVER THE TOP OF IT. ORIGINAL SURVEY BY RICH CHANEY IN 1852.



SEAL  
CERTIFIED CORRECT:  
*Gary R. Krueger*  
GARY R. KRUEGER  
Registered Land Surveyor  
5/25/04  
DATE: \_\_\_\_\_

## TIE SKETCH:

SHOW MINIMUM OF FOUR(4) HORIZONTAL TIE DISTANCES TO FIXED WITNESS MONUMENTS. DESCRIBE ALL MONUMENTS FOUND OR SET. CORRECT ALL DISTANCES SHOWN TO STANDARD TEMPERATURE OF 68\* F.



- SET 7/8" X 30" REBAR W/CAPS
- ⌋ SET WITNESS POST
- ⊙ SET RR SPIKE OVER LIMESTONE

RECEIVED BY LINCOLN COUNTY  
SURVEYOR THIS 13<sup>th</sup> DAY  
OF June 20 04  
*Tony Wall*  
COUNTY SURVEYOR

NO.  

W-21