

U.S. PUBLIC LAND SURVEY MONUMENT RECORD

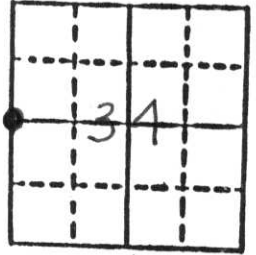
Note: This form is intended and designed to fulfill all requirements of Wisconsin Administrative Code, Chapter A-E 5.02, U.S. Public Land Survey Monument Record (3) (a) (b) (c) (d) (e) (f) (g) (h) (i). An additional sheet may be added if necessary to conform with said requirements.

(a) Corner location: Township 31 North

Range 5 East

Town _____

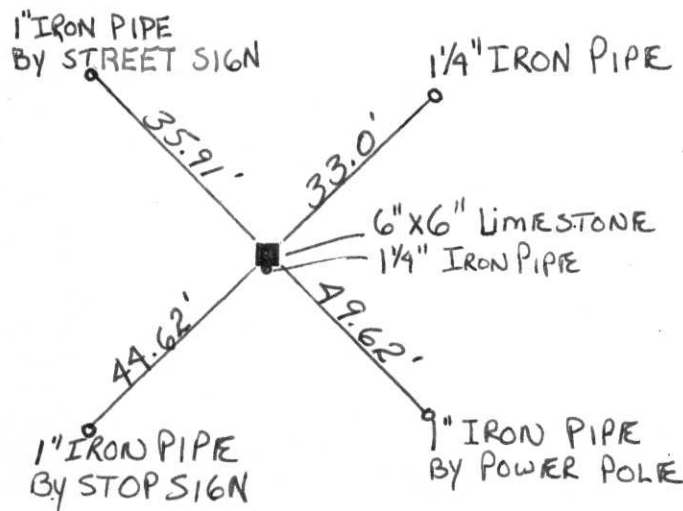
County LINCOLN



Section 34

b) (f) (g) (h) Description of monument found at this corner and if it was accepted, state all evidence (material, testimonial, occupational, plats, records, other monuments) used as a basis for accepting. If not accepted or if nothing was found, state evidence used as basis for establishing location. If reestablished through lost corner proportionate methods, indicate all monuments, distances and directions used to establish. **FOUND 6" X 6" LIMESTONE MONUMENT WITH A 1/4" IRON PIPE ON SOUTH SIDE OF MONUMENT. MONUMENT FOUND AT INTERSECTION OF CENTER RD. & GREENDALE DR.**

c) (d) (e) Plan view of corner with ties to at least 4 witness monuments. If in disagreement with previously established corner, show the distances between the two corners and also indicate the ties to the disputed corner.



(f) I, EDWIN R. ABENDROTH

(type or print name) certify that the corner location on this record was determined by me or under my direction and control and that this U.S. Public Land Survey Monument Record is correct and complete to the best of my knowledge and belief.

Edwin R. Abendroth Aug. 1, 1986

Signature

Date



Index No W-13

CERTIFIED LAND CORNER RESTORATION

Index No. W-13

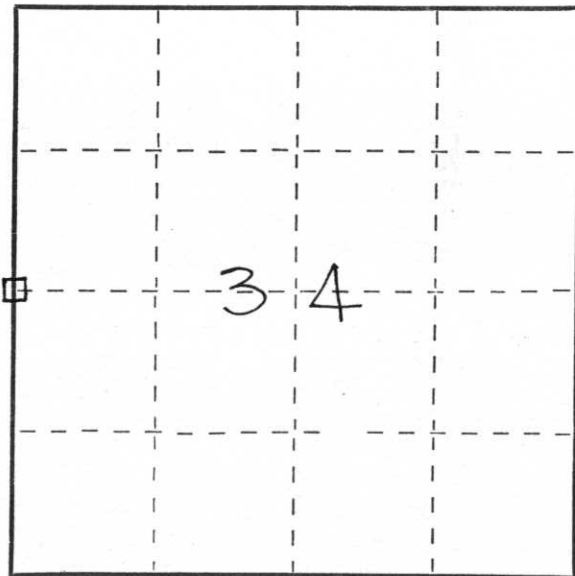
State of Wisconsin }
County of LINCOLN } ss.

History of original corner establishment:
WOOD POST SET IN ORIGINAL SURVEY

I EDWIN R. ABENDROTH do hereby
certify that on the 11TH day
of JULY, 1986, I found
evidence of the WEST 1/4 CORNER
corner of SECTION 34
Township 31, North, Range
5 EAST, Fourth, Principal Meridian,
as described hereon; and that from this evidence
I established a new monument and accessories
as described hereon to perpetuate the original
location of this corner.

Resident witnesses:

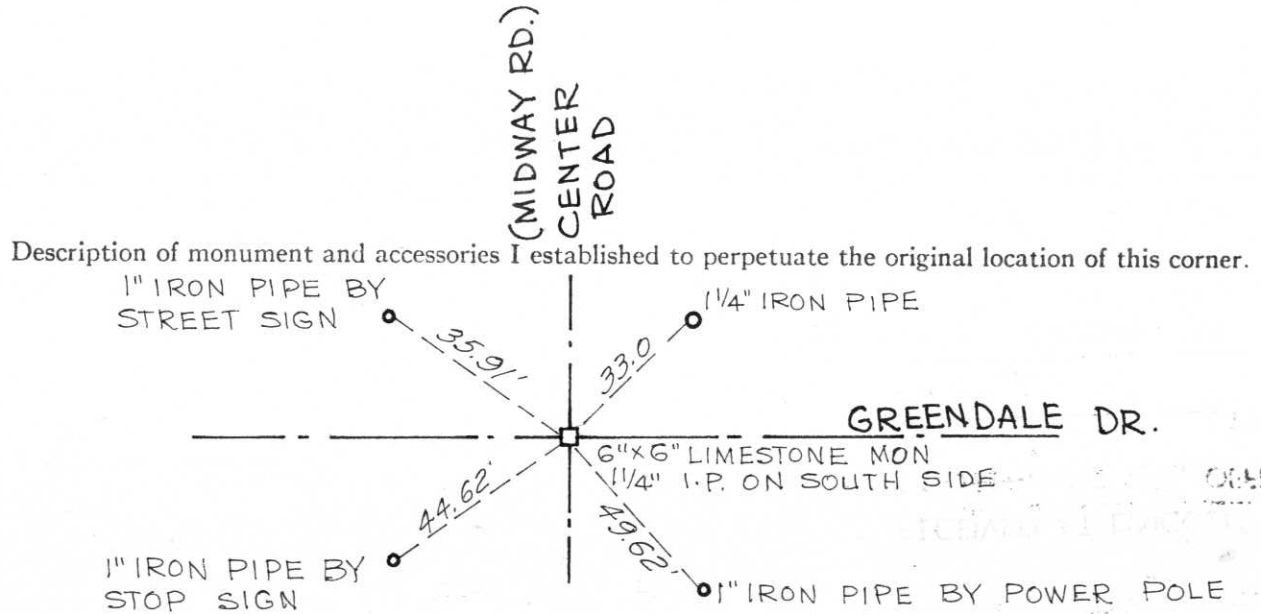
.....
.....
.....



○ = Corner monument restored.

Description of corner evidence found:

FOUND 6"x6" LIMESTONE 6" BELOW ROAD SURFACE IN GOOD
CONDITION.



Description of monument and accessories I established to perpetuate the original location of this corner.

Dated at WAUSAU, Wis., this 11TH day of JULY, 1986.

Signature Edwin R. Abendroth Title REG. LAND SURVEYOR Registration No. S-798
(County Surveyor, Registered Land Surveyor, or other duly authorized official)

Office of Register of Deeds, County of LINCOLN, I hereby certify that the within
instrument was filed in this office for record on the day of, 19.....
at o'clock M.

.....
(Register of Deeds)
By Deputy





