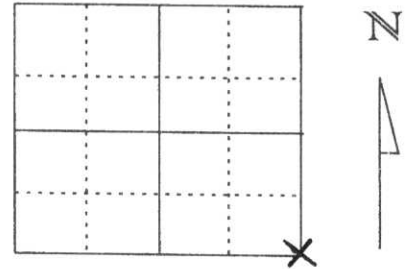


# U.S. PUBLIC LAND SURVEY MONUMENT RECORD

Note: This form is intended and designed to fulfill all requirements of Wisconsin Administrative Code, Chapter A-E 5.02, U.S. Public Land Survey Monument Record (3) (a) (b) (c) (d) (e) (f) (g) (h) (l). An additional sheet may be added if necessary to conform with said requirements.

(a) Corner location: Township 31 North  
 Range 5 East  
 Town/City/Village CORNING  
 County Lincoln



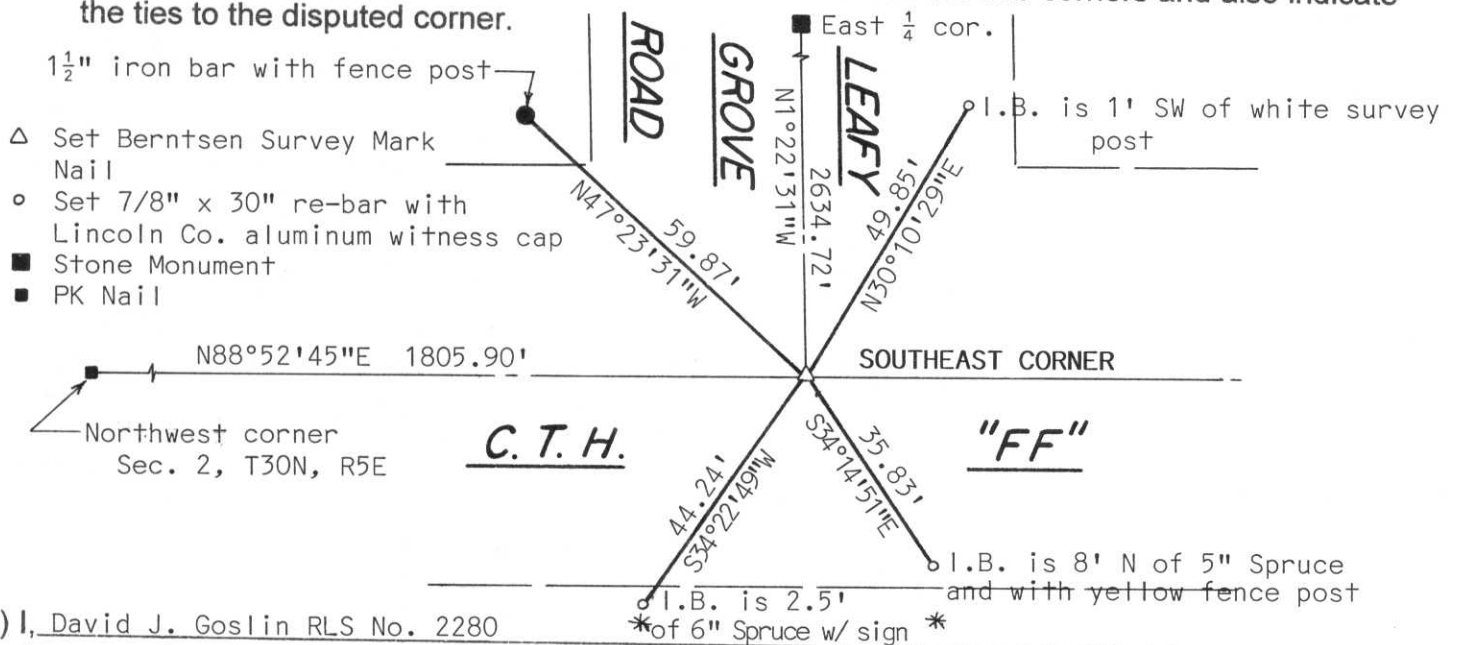
Section 32

(b) (f) (g) (h) Description of monument found at this corner and if it was accepted, state all evidence (material, testimonial, occupational, plats, records, other monuments) used as a basis for accepting. If not accepted or if nothing was found, state evidence used as basis for establishing location. If reestablished through lost corner proportionate methods, indicate all monuments, distances and directions used to establish.

In October of 1979, this corner location was dug prior to re-construction of C.T.H. "FF" by Robert Fergot and James Dickinson of the Marathon County Highway Department and a Stone Monument was found at this location. They had tied the corner with two ties. We found the two existing ties and set a Berntsen Survey Mark Nail from those existing ties. We then pounded the existing NW tie down so it was flush with the ground and pulled the existing SE tie because of its inaccessibility. Set three new ties as shown below.

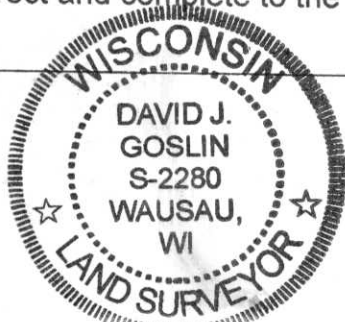
RECEIVED AT LINCOLN COUNTY  
 COURTHOUSE THIS 23 DAY  
 OF Jan. 2001  
Tony Dallman  
 LAND INFORMATION OFFICE

(c) (d) (e) Plan view of corner with ties to at least 4 witness monuments. If in disagreement with previously established corner, show the distances between the two corners and also indicate the ties to the disputed corner.



(l) I, David J. Goslin RLS No. 2280  
 (type or print name) certify that the corner location on this record was determined by me or under my direction and control and that this U.S. Public Land Survey Monument Record is correct and complete to the best of my knowledge and belief.

David J. Goslin  
 Signature



1-19-01  
 Date

Index No. 1-9

(revised 2/97)

CERTIFIED LAND CORNER RESTORATION

Index No. Y-9

State of Wisconsin }  
County of LINCOLN } ss.

History of original corner establishment:

I FRANCIS X FOX, do hereby certify that on the \_\_\_\_\_ day of \_\_\_\_\_, 1971, I found evidence of the SW corner of SECTION 33 Township 31, North, Range 5 EAST, Fourth, Principal Meridian, as described hereon; and that from this evidence I established a new monument and accessories as described hereon to perpetuate the original location of this corner.

Description of corner evidence found:

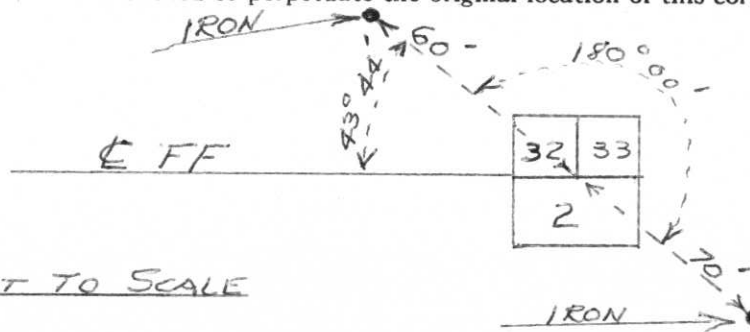
CORNER STONE

Resident witnesses:

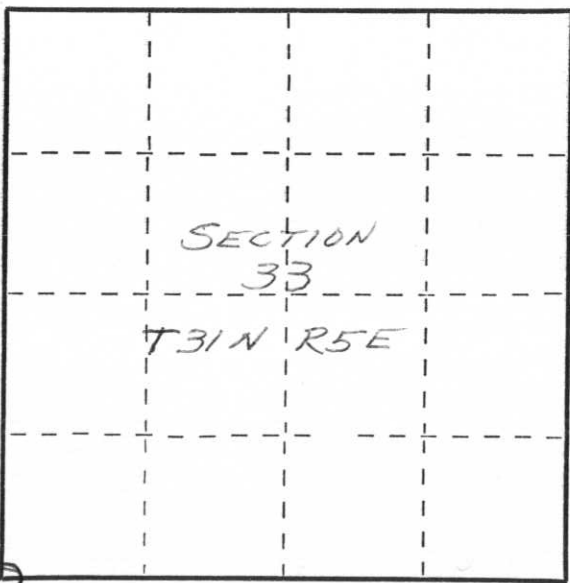
27.

Description of monument and accessories I established to perpetuate the original location of this corner.

SET 2 REFERENCE IRONS AS SHOWN



NOT TO SCALE



○ = Corner monument restored.

Dated at MERRILL, Wis., this 6TH day of DECEMBER, 1972.

Signature Francis X. Fox Title HIGHWAY COMMISSIONER Registration No. S-0046  
(County Surveyor, Registered Land Surveyor, or other duly authorized official)

Office of Register of Deeds, County of \_\_\_\_\_, I hereby certify that the within instrument was filed in this office for record on the \_\_\_\_\_ day of \_\_\_\_\_, 19\_\_\_\_ at \_\_\_\_\_ o'clock \_\_\_\_\_ M.

(Register of Deeds)

By \_\_\_\_\_ Deputy





