

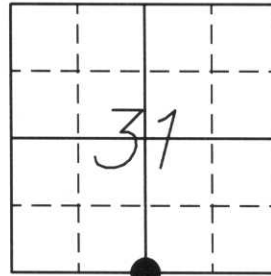
U.S. PUBLIC LAND SURVEY MONUMENT RECORD

Note: This form is intended and designed to fulfill all requirements of Wisconsin Administrative Code, Chapter A-E 5.02, U.S. Public Land Survey Monument Record (3) (a) (b) (c) (d) (e) (f) (g) (h) (i). An additional sheet may be added if necessary to conform with said requirements.

(a) Corner location: Township 31 North
 Range 5 East

Town/City/Village CORNING

County LINCOLN



Section 31

(b) (f) (g) (h) Description of monument found at this corner and if it was accepted, state all evidence (material, testimonial, accupational, plats, records, other monument(s) used as a basis for accepting. If not accepted or if nothing was found, state evidence used as a basis for establishing location. If reestablished through last corner proportionate methods, indicate all monuments, distances and directions used to establish.

History of original corner established:

Original Survey June, 1851 by J. M. Marsh
 Original corner witnessed by:
 8" Hemlock, N55°E, 16 links
 8" Hemlock, N20°E, 19 links
 14" Hemlock, N11°W, 23 links
 12" Birch, N12°W, 32 links

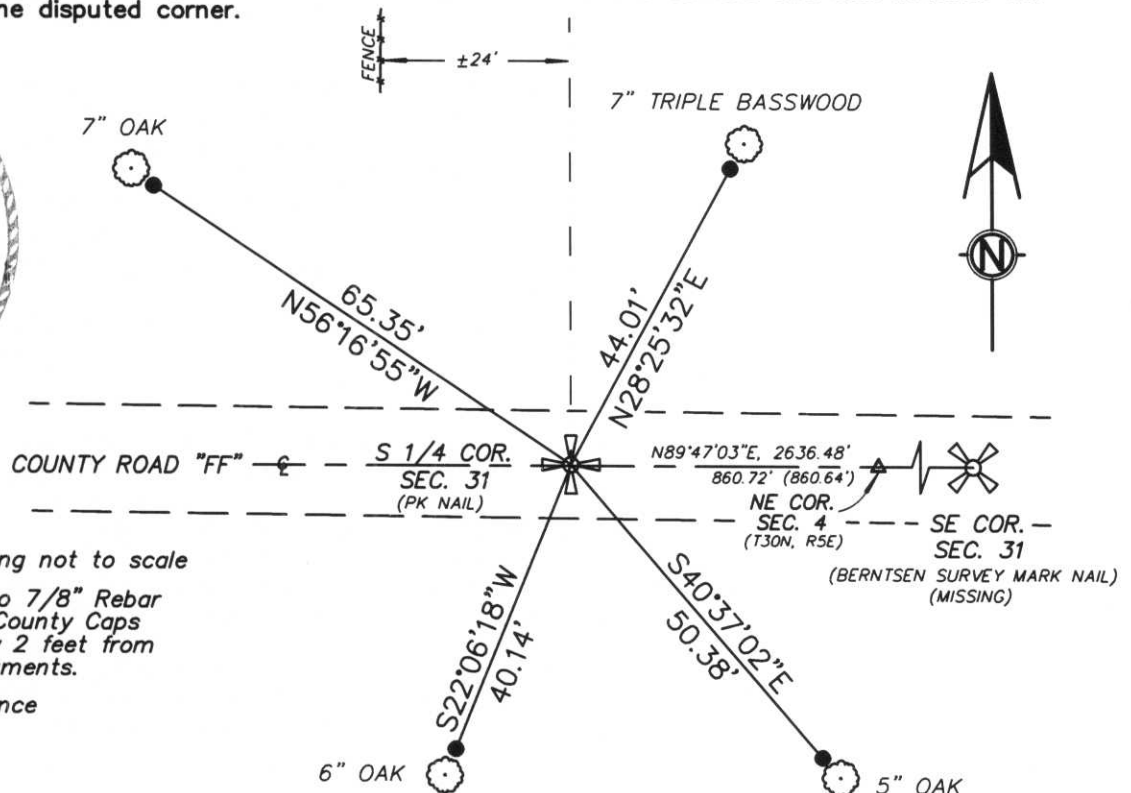
RECEIVED BY LINCOLN COUNTY
 SURVEYOR THIS 17TH DAY
 OF May 20 05
Tony Dahl
 COUNTY SURVEYOR

Corner was revisited October 25, 1979 by Robert K. Fergot where he found nothing. Original distance was 860.64 feet from the NE corner of Section 4 to the South, Mr. Fergot proportioned it as 860.09 feet.

Description of corner evidence found:

We found a PK nail along the centerline of County Road "FF". Distance to the NE corner of Section 4 to the South is 860.72 feet. It fits the original distance quite well and misses Mr. Fergots proportioned distance by 0.63 foot. A fenceline running to the North however, lies approximately 24 feet to the West. We accepted this position and tied to 7/8" Rebar with Lincoln County Caps.

(c) (d) (e) Plan view of corner with ties to at least 4 witness monuments. If in disagreement with previous established corner, show the distance between the two corners and also indicate the ties to the disputed corner.



NOTE: Drawing not to scale

- All ties are to 7/8" Rebar with Lincoln County Caps approximately 2 feet from witness monuments.

(860.64') Original distance

(i) I, William W. Nutter RLS, S-2299

(type or print name) certify that the corner location on this record was determined by me or under my direction and control and that this U.S. Public Land Survey Monument Record is correct and complete to the best of my knowledge and belief.

William W. Nutter, RLS - 2299
 Signature

4-29-2005
 Date

Index No. 9-3





