

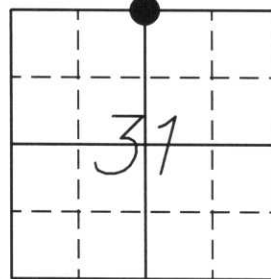
U.S. PUBLIC LAND SURVEY MONUMENT RECORD

Note: This form is intended and designed to fulfill all requirements of Wisconsin Administrative Code, Chapter A-E 5.02, U.S. Public Land Survey Monument Record (3) (a) (b) (c) (d) (e) (f) (g) (h) (i). An additional sheet may be added if necessary to conform with said requirements.

(a) Corner location: Township 31 North
 Range 5 East

Town/City/Village CORNING

County LINCOLN



Section 31

(b) (f) (g) (h) Description of monument found at this corner and if it was accepted, state all evidence (material, testimonial, occupational, plats, records, other monument(s) used as a basis for accepting. If not accepted or if nothing was found, state evidence used as a basis for establishing location. If reestablished through last corner proportionate methods, indicate all monuments, distances and directions used to establish.

History of original corner established:

Original Survey October, 1852 by Richard O. Chaney

Original corner witnessed by:

11" Hemlock, N16°E, 36 links

14" Hemlock, S6°E, 30 links

Corner was revisited by unknown, who set a berntsen monument.

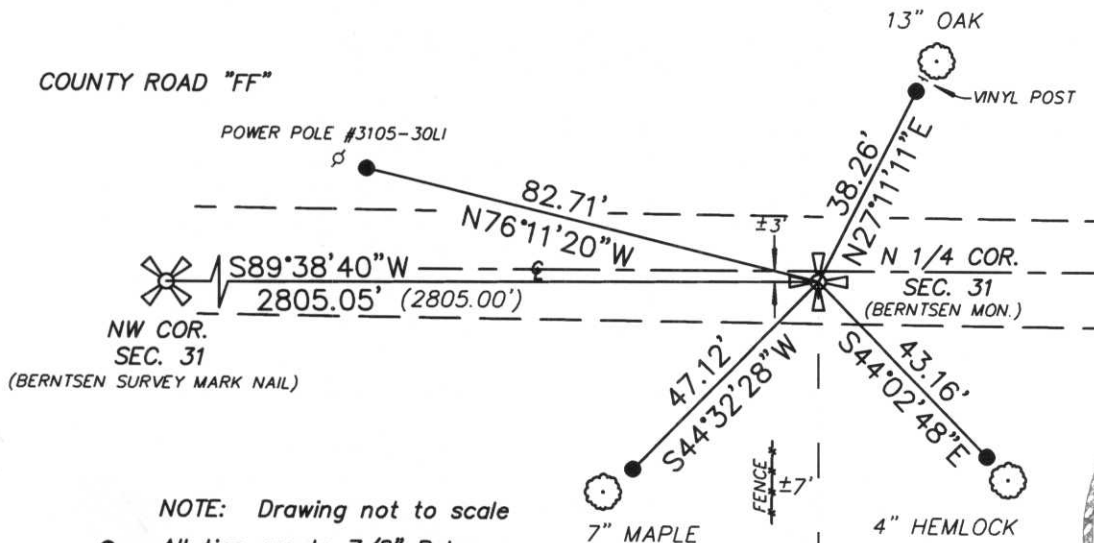
Description of corner evidence found:

We found a Berntsen Monument approximately 3 feet south of the centerline of Highland Avenue. Distance to the NW corner of Section 31 is 2805.05 feet. It fits the original distance of 2805 feet quite well.

A fenceline running to the South however, lies approximately 7 feet to the West.

We accepted this position and tied to 7/8" Rebar with Lincoln County Caps.

(c) (d) (e) Plan view of corner with ties to at least 4 witness monuments. If in disagreement with previous established corner, show the distance between the two corners and also indicate the ties to the disputed corner.



NOTE: Drawing not to scale

- All ties are to 7/8" Rebar with Lincoln County Caps approximately 2 feet from witness monuments.

(2805.00') Original distance

RECEIVED BY LINCOLN COUNTY SURVEYOR THIS 17TH DAY OF May 2005
Tom Dalt
 COUNTY SURVEYOR



(i) I, William W. Nutter RLS, S-2299

(type or print name) certify that the corner location on this record was determined by me or under my direction and control and that this U.S. Public Land Survey Monument Record is correct and complete to the best of my knowledge and belief.

William W. Nutter, RLS-2299

Signature

4-29-2005

Date

Index No. 0-3



FOR THE DISTRICT OF
COLUMBIA
PENNSYLVANIA
HARRISBURG



