

CERTIFIED LAND CORNER RESTORATION

Index No. 5-9

State of Wisconsin }  
County of Lincoln } ss.

I Edwin R. Abendroth, do hereby certify that on the 20th day of July, 1983, I found evidence of the West 1/4 corner of Section 28 Township 31, North, Range 5 East, Fourth, Principal Meridian, as described hereon; and that from this evidence I established a new monument and accessories as described hereon to perpetuate the original location of this corner.

Resident witnesses:  
.....  
.....  
.....

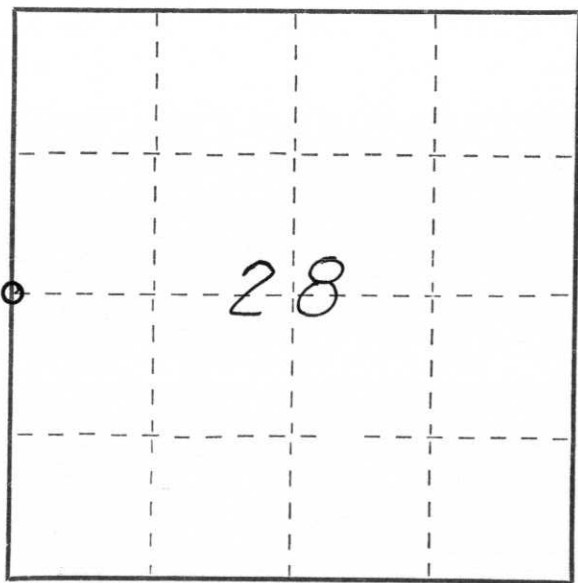
History of original corner establishment:  
Date: October 1852  
Surveyor: Rick A. Chaney  
Monument: Wood Post  
Witnesses: No original witnesses found

Description of corner evidence found:  
We excavated the road intersection and the fence line intersection and found a 6" X 6" stone monument with cross in good condition. Set 2" iron pipe at northside to aid in location. Set out several witness monuments.

Description of monument and accessories I established to perpetuate the original location of this corner.



SEE BACK OF SHEET



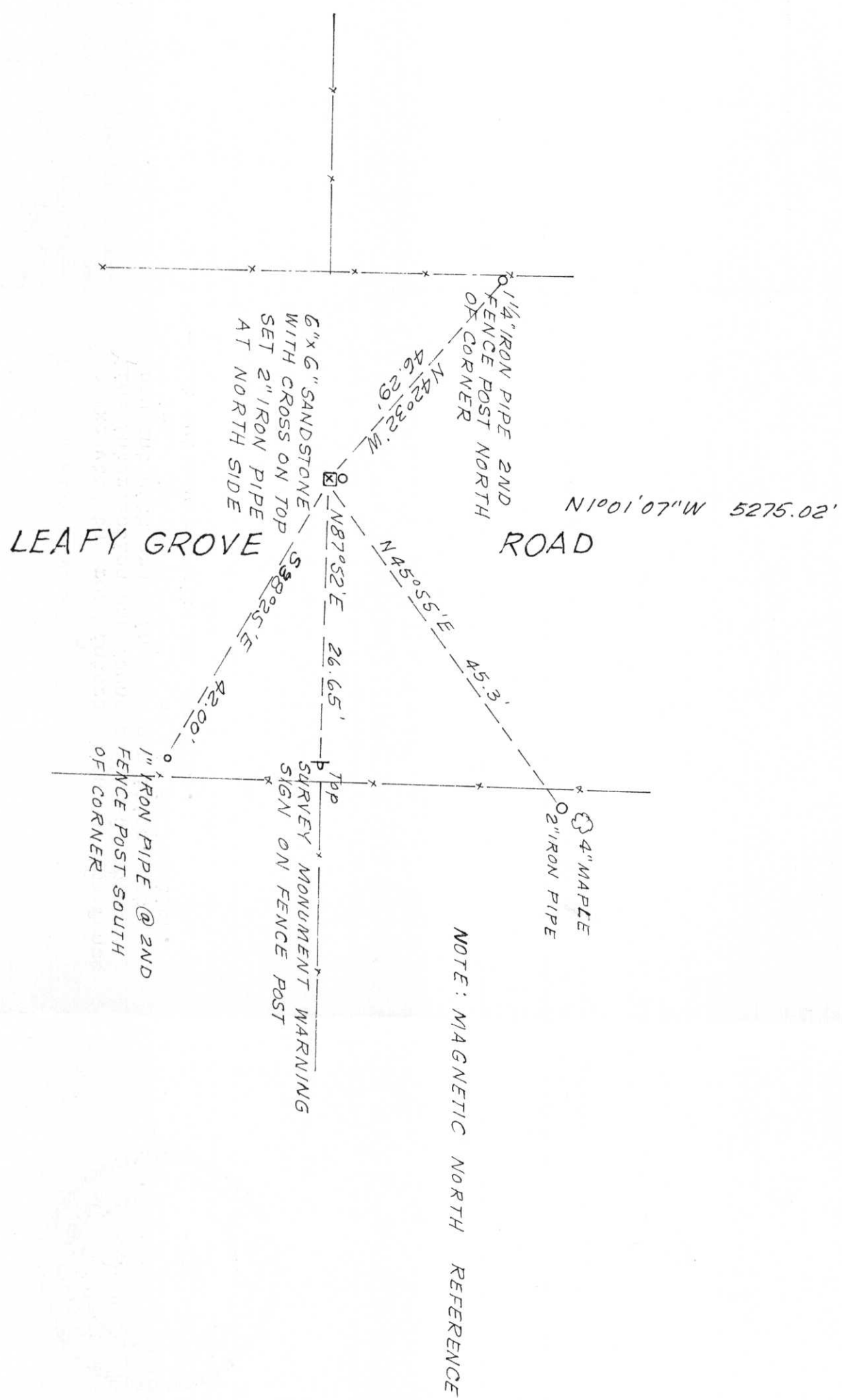
○ = Corner monument restored.

Dated at Wausau, Wis., this 28th day of July, 1983.  
Signature Edwin R. Abendroth surveyor Registration No. S-798  
(County Surveyor, Registered Land Surveyor, or other duly authorized official)

Office of Register of Deeds, County of....., I hereby certify that the within instrument was filed in this office for record on the..... day of....., 19..... at..... o'clock..... M..

.....  
(Register of Deeds)  
By..... Deputy

RECEIVED AT LINCOLN COUNTY  
 COURTHOUSE THIS 29th DAY  
 OF July 1983  
*Pat Phicker*  
 TAX DESCRIPTION OFFICE



NOTE: MAGNETIC NORTH REFERENCE

CERTIFIED LAND CORNER RESTORATION

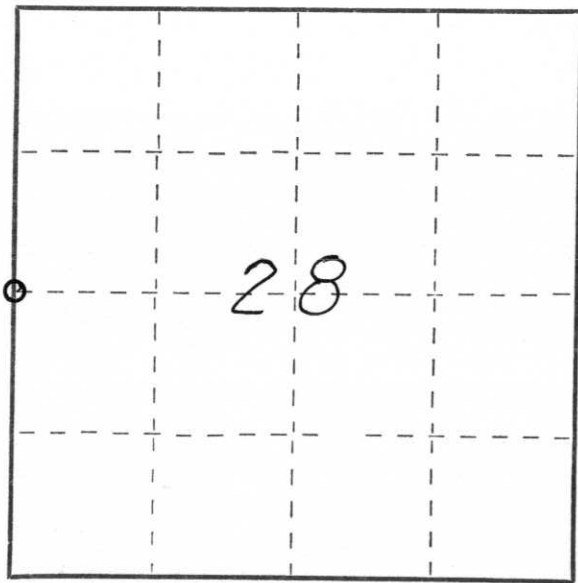
Index No. 5-9

State of Wisconsin }  
County of Lincoln } ss.

I Edwin R. Abendroth, do hereby  
certify that on the 20th day  
of July, 1983, I found  
evidence of the West 1/4  
corner of Section 28  
Township 31, North, Range  
5 East, Fourth, Principal Meridian,  
as described hereon; and that from this evidence  
I established a new monument and accessories  
as described hereon to perpetuate the original  
location of this corner.

Resident witnesses:

.....  
.....  
.....



○ = Corner monument restored.

History of original corner establishment:

Date: October 1852  
Surveyor: Rick A. Chaney  
Monument: Wood Post  
Witnesses: No original witnesses found

Description of corner evidence found:

We excavated the road intersection and the fence  
line intersection and found a 6" X 6" stone  
monument with cross in good condition. Set  
2" iron pipe at northside to aid in location.  
Set out several witness monuments.

Description of monument and accessories I established to perpetuate the original location of this corner.



SEE BACK OF SHEET

Dated at Wausau, Wis., this 28th day of July, 1983.

Signature Edwin R. Abendroth surveyor Registration No. S-798  
(County Surveyor, Registered Land Surveyor, or other duly authorized official)

Office of Register of Deeds, County of \_\_\_\_\_, I hereby certify that the within  
instrument was filed in this office for record on the \_\_\_\_\_ day of \_\_\_\_\_, 19\_\_\_\_  
at \_\_\_\_\_ o'clock \_\_\_\_\_ M.

.....  
(Register of Deeds)

By \_\_\_\_\_ Deputy