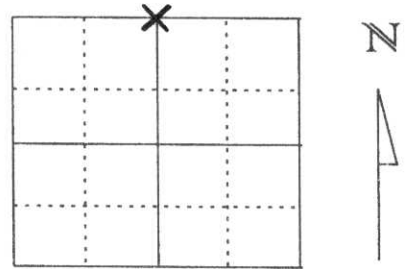


U.S. PUBLIC LAND SURVEY MONUMENT RECORD

Note: This form is intended and designed to fulfill all requirements of Wisconsin Administrative Code, Chapter A-E 5.02, U.S. Public Land Survey Monument Record (3) (a) (b) (c) (d) (e) (f) (g) (h) (l). An additional sheet may be added if necessary to conform with said requirements.

(a) Corner location: Township 31 North
 Range 5 East
 Town/City/Village CORNING
 County Lincoln



Section 32

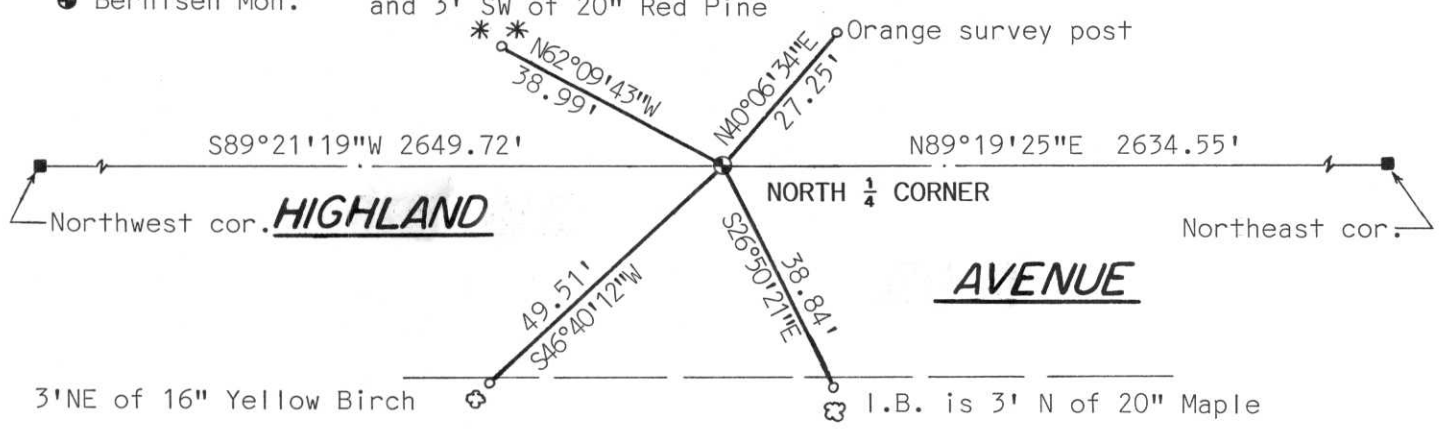
(b) (f) (g) (h) Description of monument found at this corner and if it was accepted, state all evidence (material, testimonial, occupational, plats, records, other monuments) used as a basis for accepting. If not accepted or if nothing was found, state evidence used as basis for establishing location. If reestablished through lost corner proportionate methods, indicate all monuments, distances and directions used to establish.

Dug with Lincoln County Backhoe in Greendale Road at the approximate corner location. Found a 1.5 foot piece of a stone monument 0.3' below road surface. Continued digging and found a second 1 foot piece of stone. Continued digging and found the base of the 5"x5" Stone Monument which was 1' long. Base of stone was upright and we held the position and set a Lincoln County Berntsen Monument in place of Stone base. Berntsen Monument is 1' below road surface.

RECEIVED AT LINCOLN COUNTY
 COURTHOUSE THIS 23 DAY
 OF Jan. 2001
Tony Dallman
 LAND INFORMATION OFFICE

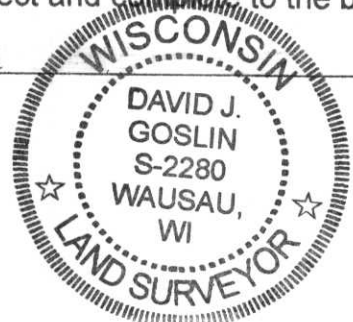
(c) (d) (e) Plan view of corner with ties to at least 4 witness monuments. If in disagreement with previously established corner, show the distances between the two corners and also indicate the ties to the disputed corner.

- Set 7/8" x 30" re-bar with Lincoln County aluminum witness cap
- Stone Monument
- Berntsen Mon.



(l) I, David J. Goslin RLS No. 2280
 (type or print name) certify that the corner location on this record was determined by me or under my direction and control and that this U.S. Public Land Survey Monument Record is correct and complete to the best of my knowledge and belief.

David J. Goslin
 Signature



1-19-00
 Date

Index No. 11-7