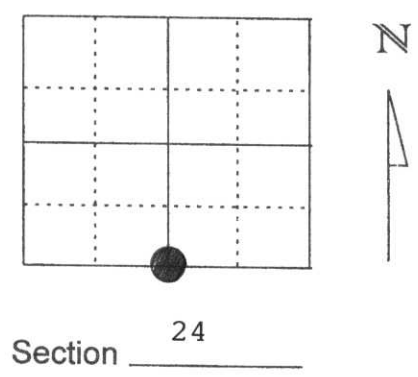


U.S. PUBLIC LAND SURVEY MONUMENT RECORD

Note: This form is intended and designed to fulfill all requirements of Wisconsin Administrative Code, Chapter A-E 5.02, U.S. Public Land Survey Monument Record (3) (a) (b) (c) (d) (e) (f) (g) (h) (i). An additional sheet may be added if necessary to conform with said requirements.

(a) Corner location: Township 31 North
 Range 5 East
 Town/City/Village TN. OF CORNING
 County Lincoln

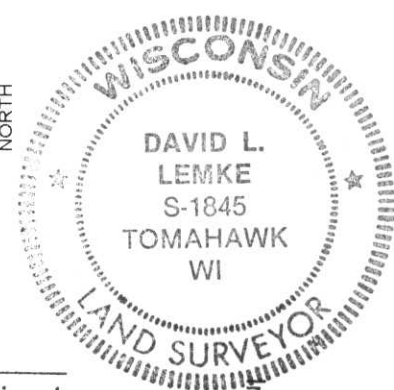
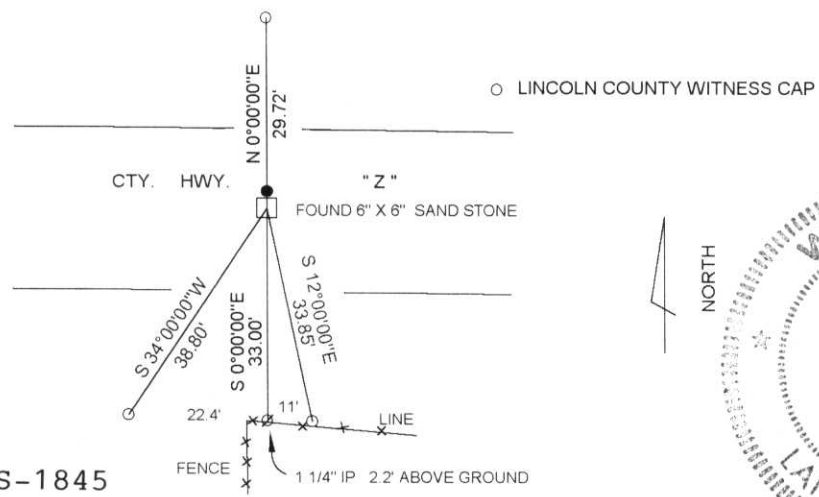


(b) (f) (g) (h) Description of monument found at this corner and if it was accepted, state all evidence (material, testimonial, occupational, plats, records, other monuments) used as a basis for accepting. If not accepted or if nothing was found, state evidence used as basis for establishing location. If reestablished through lost corner proportionate methods, indicate all monuments, distances and directions used to establish.

EXCAVATED HIGHWAY AT FENCE CORNER AND FOUND 1 1/4" IRON PIPE TO THE SOUTH FOUND 6"X6" SAND STONE 1 1/2' BELOW PAVEMENT 1' SOUTH OF THE C/L OF HWY. " Z ". SET 1" IRON BAR NORTH SIDE OF STONE AND WITNESS CAPS AS SHOWN

(c) (d) (e) Plan view of corner with ties to at least 4 witness monuments. If in disagreement with previously established corner, show the distances between the two corners and also indicate the ties to the disputed corner.

RECEIVED AT LINCOLN COUNTY COURTHOUSE THIS 24 DAY OF April 1998
David Lemke
 TAX DESCRIPTION OFFICE



DAVID L. LEMKE S-1845

(i) I, _____
 (type or print name) certify that the corner location on this record was determined by me or under my direction and control and that this U.S. Public Land Survey Monument Record is correct and complete to the best of my knowledge and belief.

MAR. 30 1998

David Lemke
 Signature

Date

Index No. Q-23