

# LINCOLN COUNTY U.S. PUBLIC LAND TIE SHEET RECORD

SECTION 24  
TOWNSHIP 31N  
RANGE 5 E

243154  
NO.

**CORNING**  
CITY, VILLAGE, TOWN

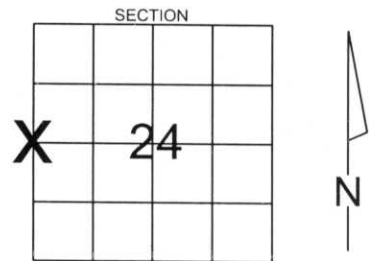
LANDMARK

CORNER INDENTITY: 6" x 6" LIMESTONE MONUMENT

LINCOLN COUNTY COORDINATE: N: 113717.0920  
E: 359301.0480

DATE OF SURVEY: May 24, 2006  
SURVEY PARTY: Rutzen/Jacobson

FOUND   
SET   
RE-SET   
RE-TIED



Description of monument found at this corner and if was accepted, state all evidence (material, testimonial, occupational, plats, records, other monuments) used as a basis for accepting. If not accepted or if nothing was found, state evidence used as basis for establishing location. If reestablished through lost corner proportionate methods, indicate all monuments, distances and directions used to establish.

## BASIS FOR MONUMENT LOCATION:

(DESCRIBE METHOD OF SURVEY AND CONER AUTHENTICATION)

Found 6" x 6" limestone monument 6" below gravel surface(Held), also 4 Lincoln County monuments were found.



CERTIFIED CORRECT.

*Ronald K. Jacobson*

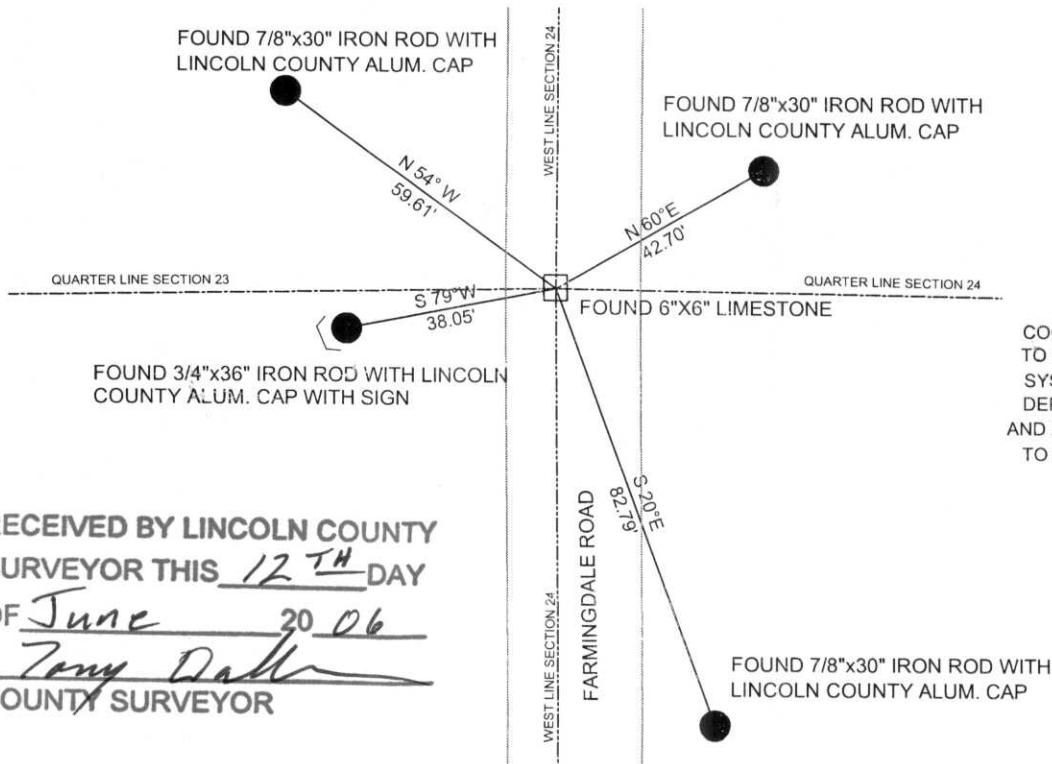
Ronald Jacobson RLS 2059-008  
Registered Land Surveyor

DATE: June 6, 2006

COMPANY Central Wisconsin Engineers & Architects

## TIE SKETCH:

SHOW MINIMUM OF FOUR (4) HORIZONTAL TIE DISTANCES TO FIXED WITNESS MONUMENTS.  
DESCRIBE ALL MONUMENTS FOUND OR SET. ALL DISTANCES SHOWN IN US SURVEY FEET.



COORDINATES ARE REFERENCED TO LINCOLN COUNTY COORDINATE SYSTEM AS DEVELOPED BY THE WI. DEPARTMENT OF TRANSPORTATION AND ARE BASED ON GPS OBSERVATIONS TO CONTROL POINTS AS SUPPLIED BY LINCOLN COUNTY.



NOT TO SCALE  
BEARINGS REFERENCED TO MAGNETIC NORTH

RECEIVED BY LINCOLN COUNTY SURVEYOR THIS 12<sup>TH</sup> DAY OF June 20 06  
*Tony Dahl*  
COUNTY SURVEYOR

0-21

# LINCOLN COUNTY U.S. PUBLIC LAND TIE SHEET RECORD

SECTION 24  
TOWNSHIP 31N  
RANGE 5 E

243154

LANDMARK

**CORNING**  
CITY, VILLAGE, TOWN

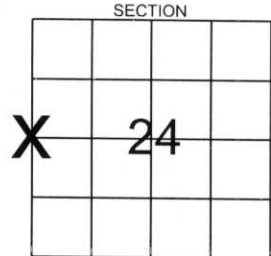
NO.

CORNER INDENTITY: 6" x 6" LIMESTONE MONUMENT

LINCOLN COUNTY COORDINATE: N: 113717.0920  
E: 359301.0480

DATE OF SURVEY: May 24, 2006  
SURVEY PARTY: Rutzen/Jacobson

FOUND   
SET   
RE-SET   
RE-TIED

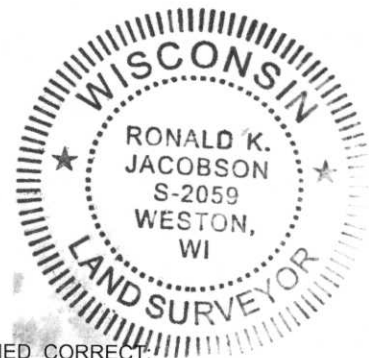


Description of monument found at this corner and if was accepted, state all evidence (material, testimonial, occupational, plats, records, other monuments) used as a basis for accepting. If not accepted or if nothing was found, state evidence used as basis for establishing location. If reestablished through lost corner proportionate methods, indicate all monuments, distances and directions used to establish.

## BASIS FOR MONUMENT LOCATION:

(DESCRIBE METHOD OF SURVEY AND CONER AUTHENTICATION)

Found 6" x 6" limestone monument 6" below gravel surface(Held), also 4 Lincoln County monuments were found.



CERTIFIED CORRECT:

*Ronald K. Jacobson*

Ronald Jacobson RLS 2059-008

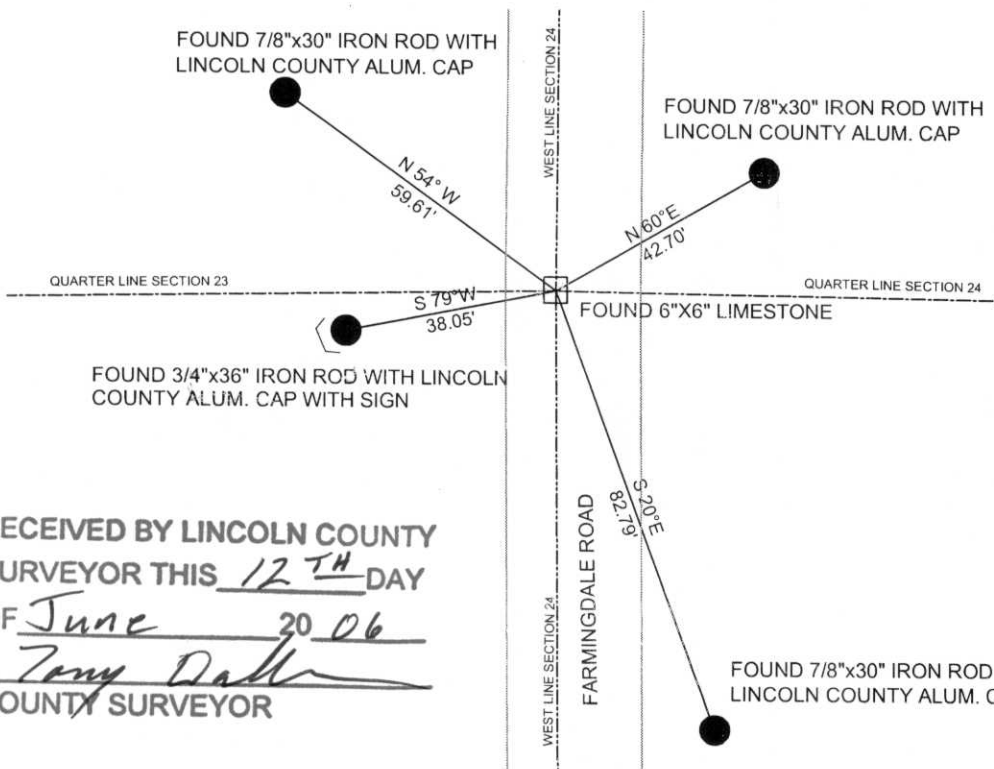
Registered Land Surveyor

DATE: June 6, 2006

COMPANY Central Wisconsin Engineers & Architects

## TIE SKETCH:

SHOW MINIMUM OF FOUR (4) HORIZONTAL TIE DISTANCES TO FIXED WITNESS MONUMENTS.  
DESCRIBE ALL MONUMENTS FOUND OR SET. ALL DISTANCES SHOWN IN US SURVEY FEET.



COORDINATES ARE REFERENCED TO LINCOLN COUNTY COORDINATE SYSTEM AS DEVELOPED BY THE WI. DEPARTMENT OF TRANSPORTATION AND ARE BASED ON GPS OBSERVATIONS TO CONTROL POINTS AS SUPPLIED BY LINCOLN COUNTY.



NOT TO SCALE  
BEARINGS REFERENCED TO MAGNETIC NORTH

RECEIVED BY LINCOLN COUNTY SURVEYOR THIS 12<sup>TH</sup> DAY OF June 20 06  
*Tony Dahl*  
COUNTY SURVEYOR

0-21

# U.S. PUBLIC LAND SURVEY MONUMENT RECORD

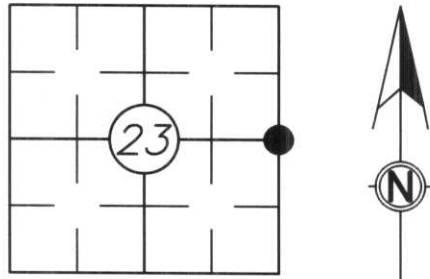
Note: This form is intended and designed to fulfill all requirements of Wisconsin Administrative Code, Chapter A-E 5.02, U.S. Public Land Survey Monument Record (3) (a) (b) (c) (d) (e) (f) (g) (h) (i). An additional sheet may be added if necessary to conform with said requirements.

(a) Corner location: Township 31 North

Range 5 East

Town/City/Village CORNING

County LINCOLN



Section 23

(b) (f) (g) (h) Description of monument found at this corner and if it was accepted, state all evidence (material, testimonial, occupational, plats, records, other monument(s) used as a basis for accepting. If not accepted or if nothing was found, state evidence used as a basis for establishing location. If reestablished through last corner proportionate methods, indicate all monuments, distances and directions used to establish.

History of original corner established:

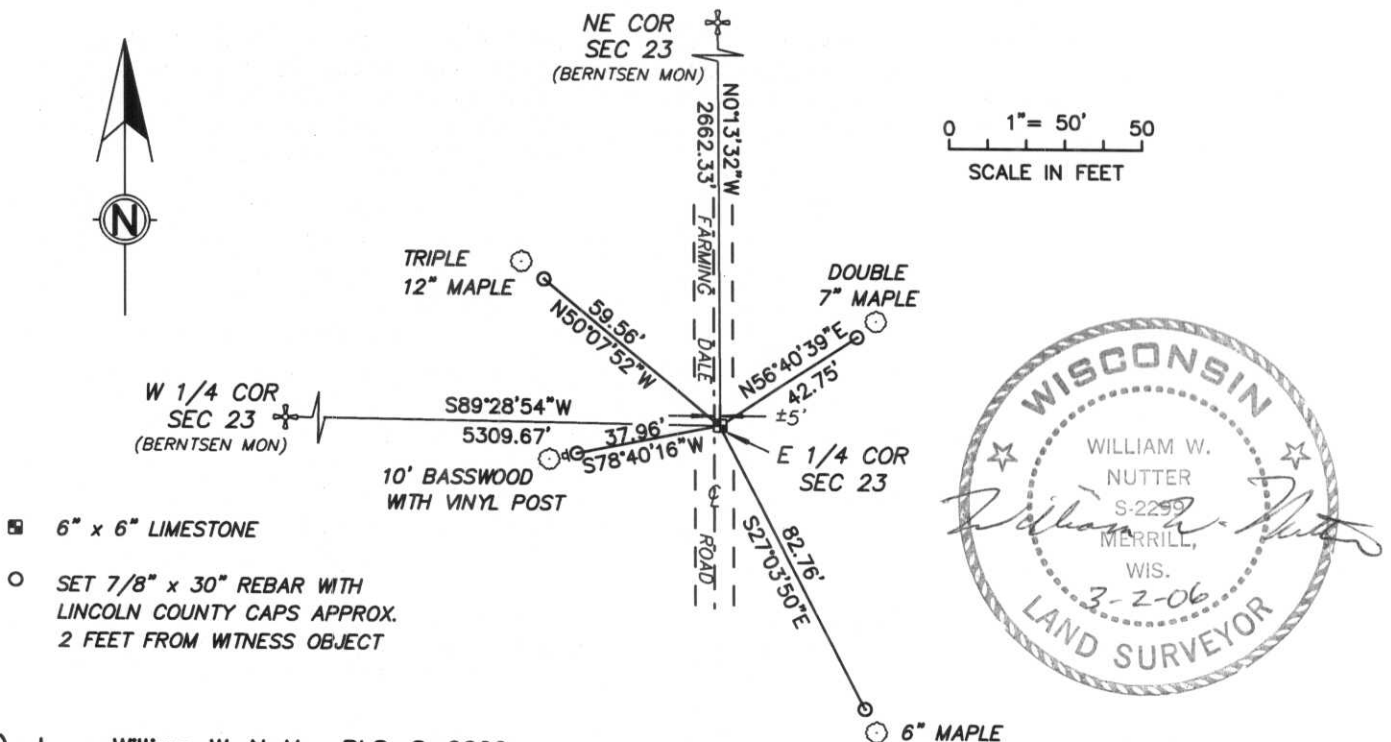
Original Survey by Richard O. Chaney, October 1852

Set post with the following bearing trees: 26" Hemlock, S30°E, 52 links  
20" Hemlock, N36°W, 58 links

Description of corner evidence found:

The Town of Corning used its backhoe to dig at the centerline of Farming Dale Road at its intersection with a fence to the East. We found a 6" x 6" limestone broken in two. The top 1/2 being 15" long and 1/4" on its face. We straightened the bottom 1/2 which is about 19" and flipped it upside down so the smooth bottom was on top. We then chiseled an "X" on it and laid the top piece along the East side with 1/4" facing up. We also placed a 3/4" rebar on the North side to aid in location. It was then tied to 7/8" rebar with Lincoln County caps. Stone is 4" below the surface of the road. Witnessed by Mike Schmidt.

(c) (d) (e) Plan view of corner with ties to at least 4 witness monuments. If in disagreement with previous established corner, show the distance between the the two corners and also indicate the the ties to the disputed corner.



(i) I, William W. Nutter RLS, S-2299

(type or print name) certify that the corner location on this record was determined by me or under my direction and control and that this U.S. Public Land Survey Monument Record is correct and complete to the best of my knowledge and belief.

William W. Nutter  
Signature

3-2-2006  
Date

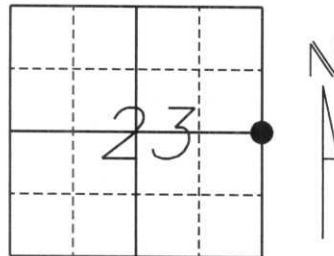
Index No.

0-21

# U.S. PUBLIC LAND SURVEY MONUMENT RECORD

Note: This form is intended and designed to fulfill all requirements of Wisconsin Administrative Code, Chapter A-E 5.02, U.S. Public Land Survey Monument Record (3) (a) (b) (c) (d) (e) (f) (g) (h) (i). An additional sheet may be added if necessary to conform with said requirements.

(a) Corner location: Township 31 North  
 Range 5 East  
 Town/City/Village CORNING  
 County LINCOLN



Section 23

(b) (f) (g) (h) Description of monument found at this corner and if it was accepted, state all evidence (material, testimonial, occupational, plats, records, other monuments) used as a basis for accepting. If not accepted or if nothing was found, state evidence used as a basis for establishing location. If reestablished through lost corner proportionate methods, indicate all monuments, distance and directions used to establish.

*History of original corner establishment:*

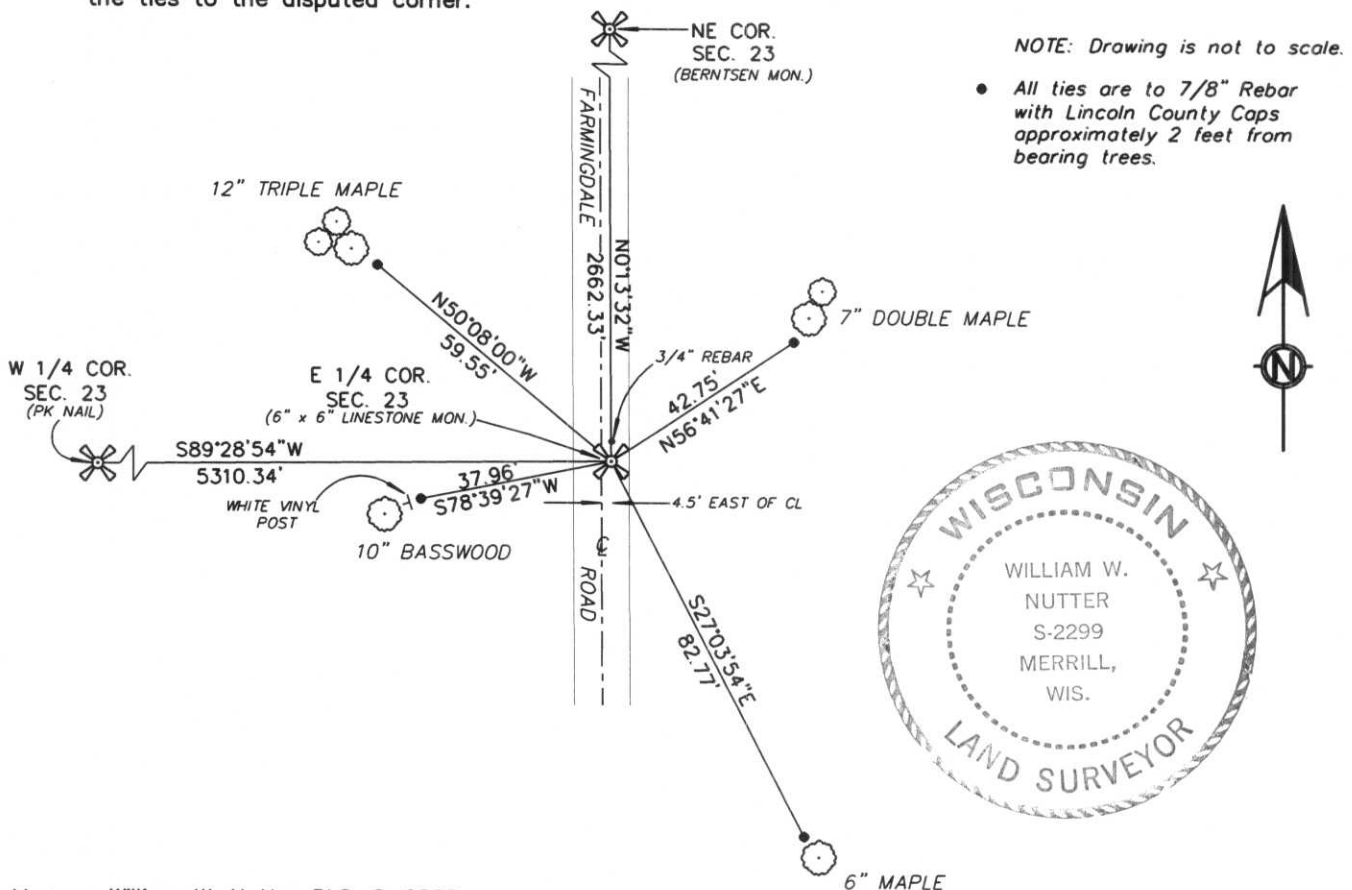
*Original Survey was October, 1852 by Richard O. Chaney. Original corner was a wooden post with bearing trees: 26" Hemlock S30°E, 52 lks., 20" Birch N36°W, 58 lks.*

*Unknown person and date when a Limestone Monument was placed.*

*Description of corner evidence found:*

*We dug, with the aid of the Town of Corning Backhoe, at the extension of a fenceline to the east and the centerline of Farmingdale Road and found a 6"x6" Limestone Monument broken in two with the top half lying along the south side of the bottom half. The top half being 15" long and having 1/4 scribed on its face. The bottom half being 19" long and standing upright in good condition. We accepted the location of the bottom half and flipped the stone so that the squared, smooth bottom was on top. We then scribed a new "X" on top and placed top piece along the east side of the corner with 1/4 facing up. We also placed a 3/4" rebar on the north side of the corner to aid in location. The stone is 3" below road surface and approximately 4.5 feet east of centerline. We accepted the stone's position and tied to 7/8" Rebars with Lincoln County Caps.*

(c) (d) (e) Plan view of corner with ties to at least 4 witness monuments. If in disagreement with previously established corner, show the distances between the two corners and also indicate the ties to the disputed corner.



NOTE: Drawing is not to scale.  
 • All ties are to 7/8" Rebar with Lincoln County Caps approximately 2 feet from bearing trees.



(i) I, William W. Nutter RLS, S-2299  
 (type or print name) certify that the corner location on this record was determined by me or under my direction and control and that this U.S. Public Land Survey Monument Record is correct and complete to the best of my knowledge and belief.

William W. Nutter Signature  
 4-12-2004 Date

(revised 2/97)

Index No. 0-21











