

# U.S. PUBLIC LAND SURVEY MONUMENT RECORD

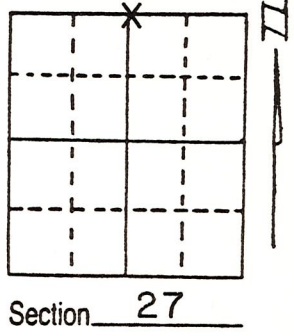
Note: This form is intended and designed to fulfill all requirements of Wisconsin Administrative Code, Chapter A-E 5.02, U.S. Public Land Survey Monument Record (3) (a) (b) (c) (d) (e) (f) (g) (h) (i). An additional sheet may be added if necessary to conform with said requirements.

(a) Corner location: Township 31 North

Range 5 East

Town/City/Village CORNING

County LINCOLN

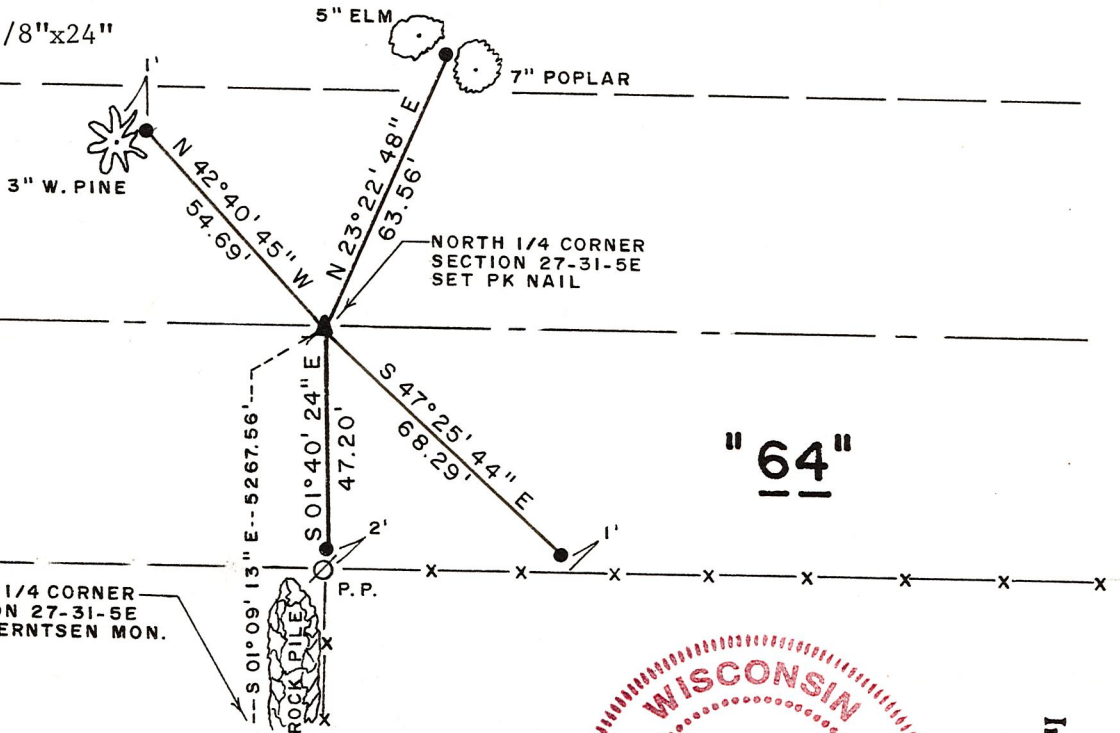


(b) (f) (g) (h) Description of monument found at this corner and if it was accepted, state all evidence (material, testimonial, occupational, plats, records, other monuments) used as a basis for accepting. If not accepted or if nothing was found, state evidence used as basis for establishing location. If reestablished through lost corner proportionate methods, indicate all monuments, distances and directions used to establish.

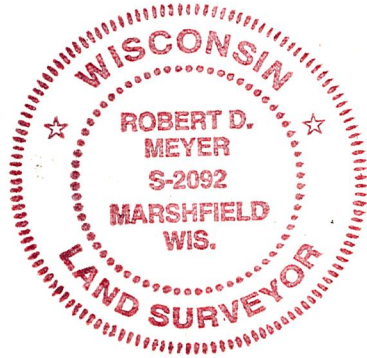
Accepted the centerline of S.T.H. "64" and the extension of a fenceline from the South as the best evidence of this corners location, this position is in close agreement with local conditions. The centerline of S.T.H. "64" was established from found R/W channels and the R/W plat of D.O.T. Project T 020(5). No evidence of the original corner nor its accessories could be found.

(c) (d) (e) Plan view of corner with ties to at least 4 witness monuments. If in disagreement with previously established corner, show the distances between the two corners and also indicate the ties to the disputed corner.

NOTE: All ties are to 7/8"x24" rebar set flush.



(i) I, Robert D. Meyer  
 (type or print name) certify that the corner location on this record was determined by me or under my direction and control and that this U.S. Public Land Survey Monument Record is correct and complete to the best of my knowledge and belief.



Index No. 2-15

Robert D. Meyer                      6/21/94  
 Signature                                      Date







