

# LINCOLN COUNTY U.S. PUBLIC LAND TIE SHEET RECORD

SECTION 21  
TOWNSHIP 31N  
RANGE 5 E

213157  
NO.

LANDMARK

**CORNING**  
CITY, VILLAGE, TOWN

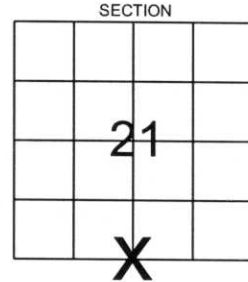
CORNER INDENTITY: SURVEY NAIL

LINCOLN COUNTY COORDINATE: N: 111102.2244

E: 346095.9881

DATE OF SURVEY: July 6, 2006  
SURVEY PARTY: Rutzen

- FOUND
- SET
- RE-SET
- RE-TIED

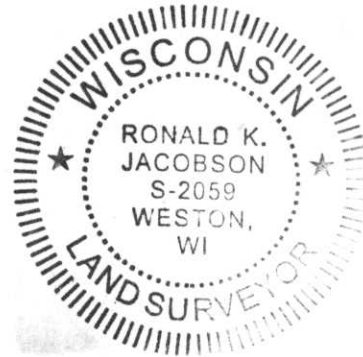


Description of monument found at this corner and if was accepted, state all evidence (material, testimonial, occupational, plats, records, other monuments) used as a basis for accepting. If not accepted or if nothing was found, state evidence used as basis for establishing location. If reestablished through lost corner proportionate methods, indicate all monuments, distances and directions used to establish.

## BASIS FOR MONUMENT LOCATION:

(DESCRIBE METHOD OF SURVEY AND CONER AUTHENTICATION)

Monument was set based on right-of-way plat for S.T.H. 64, and evidence located in the field.



RECEIVED BY LINCOLN COUNTY  
SURVEYOR THIS 12<sup>TH</sup> DAY  
OF July 20 06  
Tom Rutzen  
COUNTY SURVEYOR

CERTIFIED CORRECT:

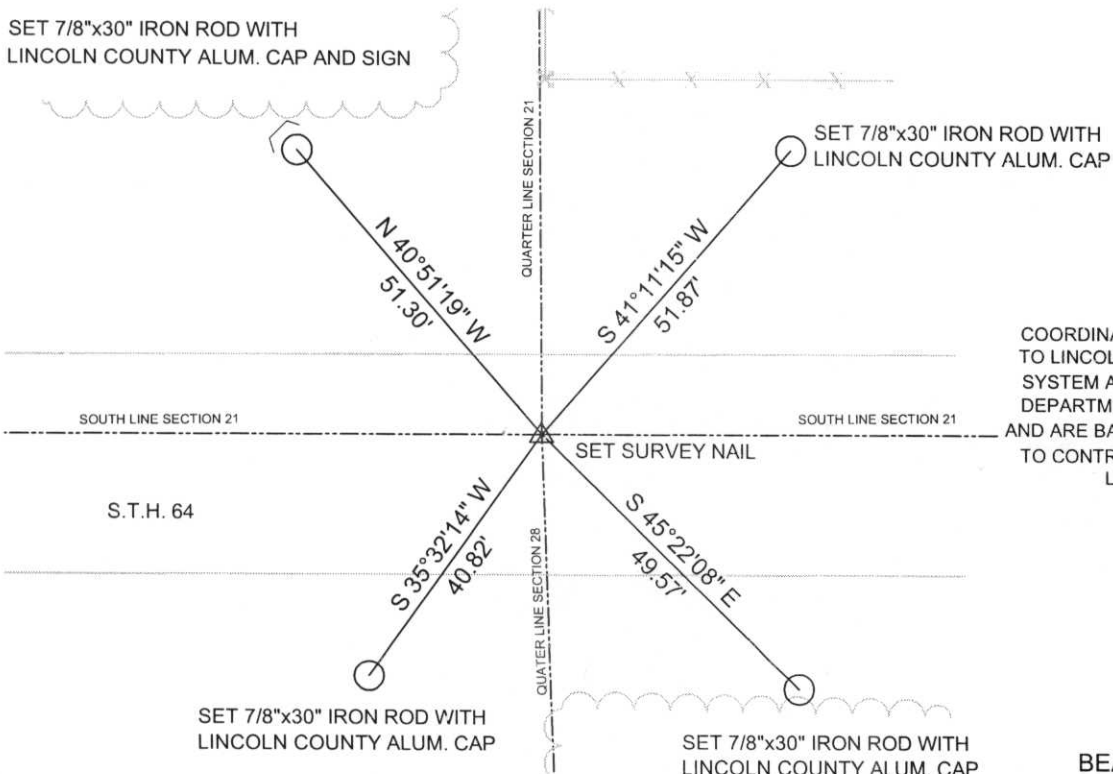
Ronald Jacobson  
Registered Land Surveyor  
Ronald Jacobson RLS 2059-008

COMPANY: Central Wisconsin Engineers & Architects  
5707 Schofield Ave.  
Weston, Wisconsin 54476  
(715) 359-3400

DATE: July 10, 2006

## TIE SKETCH:

SHOW MINIMUM OF FOUR (4) HORIZONTAL TIE DISTANCES TO FIXED WITNESS MONUMENTS.  
DESCRIBE ALL MONUMENTS FOUND OR SET. ALL DISTANCES SHOWN IN US SURVEY FEET.



COORDINATES ARE REFERENCED TO LINCOLN COUNTY COORDINATE SYSTEM AS DEVELOPED BY THE WI. DEPARTMENT OF TRANSPORTATION AND ARE BASED ON GPS OBSERVATIONS TO CONTROL POINTS AS SUPPLIED BY LINCOLN COUNTY.

NOT TO SCALE  
BEARINGS REFERENCED TO LINCOLN COUNTY COORDINATE SYSTEM

0-11









