

CERTIFIED LAND CORNER RESTORATION

Index No. 0-5

State of Wisconsin }
County of LINCOLN } ss.

History of original corner establishment:

I WILLIAM E. WENGELER, do hereby certify that on the 9TH day of Aug, 1971, I found evidence of the EAST 1/4 COR. OF corner of SECTION 19 Township 31, North, Range 5, Fourth, Principal Meridian, as described hereon; and that from this evidence I established a new monument and accessories as described hereon to perpetuate the original location of this corner.

Description of corner evidence found:

GRANITE MONUMENT, BROKEN IN TWO PIECES, BOTTOM STILL IN ORIGINAL HOLE.

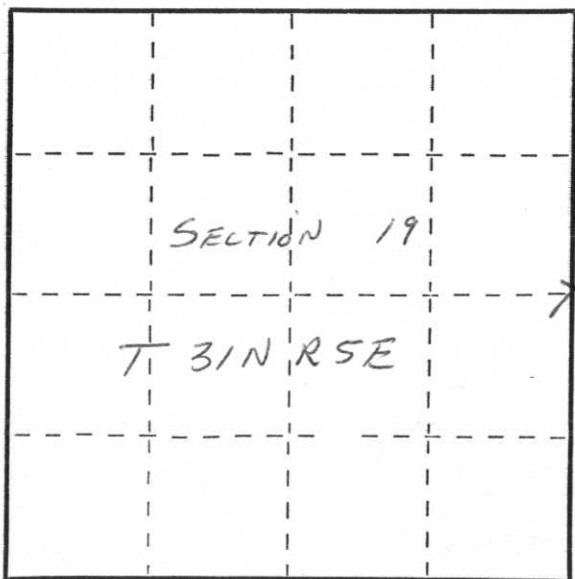
Resident witnesses:

.....
.....
.....

Description of monument and accessories I established to perpetuate the original location of this corner.

REPLACED WITH GRANITE MONUMENT AND RESET IT 10" BELOW THE SURFACE OF RD.
BEARING TRAPS:
SE FOOTING OF SHACK 14" CROSBOT POST N78°W 58.10'
ASPEN 7" N22°E 47.00'

16.



○ = Corner monument restored.

Dated at MERRILL, Wis., this 12TH day of DECEMBER, 1972

Signature William E Wengeler Title Dist Forest Adm. Registration No.
(County Surveyor, Registered Land Surveyor, or other duly authorized official)

Office of Register of Deeds, County of, I hereby certify that the within instrument was filed in this office for record on the day of, 19..... at o'clock M.

.....
(Register of Deeds)

By Deputy