

CERTIFIED LAND CORNER RESTORATION

Index No. M-3

State of Wisconsin }
County of Lincoln } ss.

History of original corner establishment:
Wood post set by original government surveyor

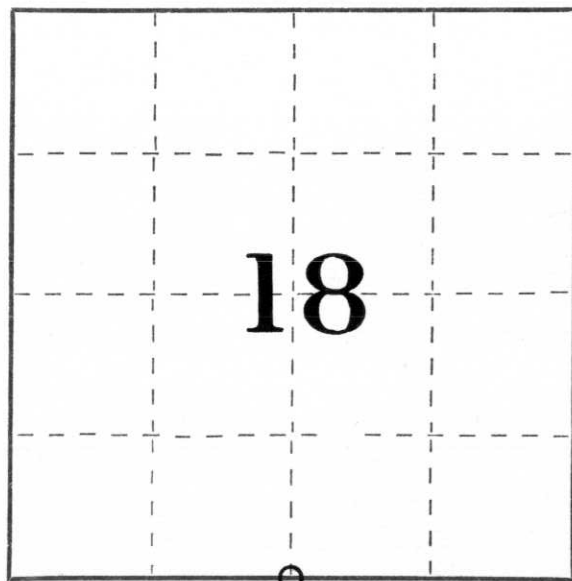
I Sheridan D. Schwark, do hereby certify that on the 12th day of July, 1982, I found evidence of the South one-quarter corner of Section 18 Township 31, North, Range 5 East, Fourth, Principal Meridian, as described hereon; and that from this evidence I established a new monument and accessories as described hereon to perpetuate the original location of this corner.

Description of corner evidence found:

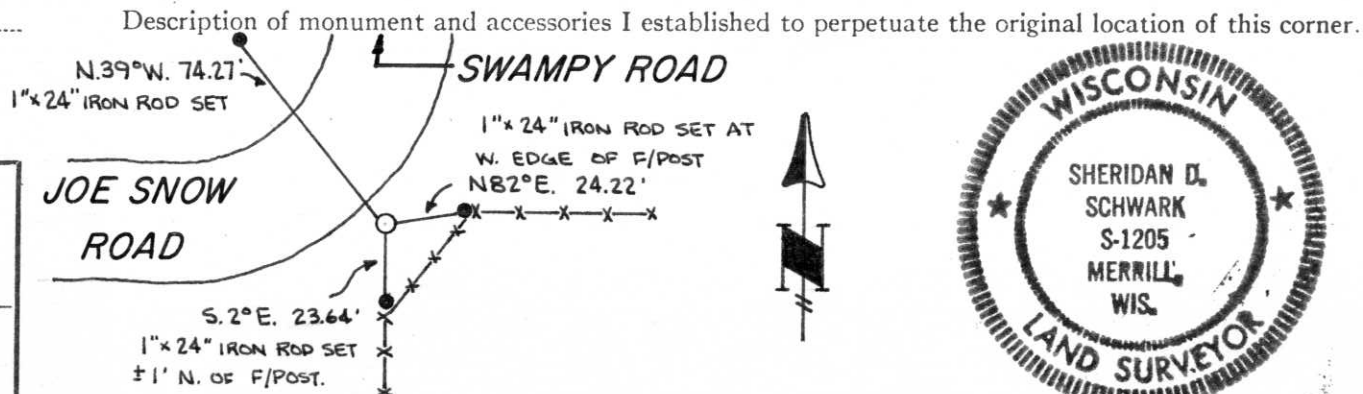
A 5" x 5" stone monument which was tipped northerly was pointed out to us by William Behrens (Town of Corning chairman). We reset the corner with a Lincoln County Berntsen monument, set a Do Not Disturb Survey Monument sign and established the references shown below.

Resident witnesses:

William Behrens



○ = Corner monument restored.



Description of monument and accessories I established to perpetuate the original location of this corner.



Dated at Merrill, Wis., this 28th day of July, 19 82.

Signature Sheridan D. Schwark Title Registered Land Surveyor Registration No. S-1205
(County Surveyor, Registered Land Surveyor, or other duly authorized official)

Office of Register of Deeds, County of _____, I hereby certify that the within instrument was filed in this office for record on the _____ day of _____, 19 _____ at _____ o'clock _____ M.

(Register of Deeds)

By _____ Deputy