

LINCOLN COUNTY U.S. PUBLIC LAND TIE SHEET RECORD

SECTION 17
TOWNSHIP 31N
RANGE 5 E

173155
NO.

CORNING
CITY, VILLAGE, TOWN

LANDMARK

CORNER INDENTITY: SURVEY NAIL

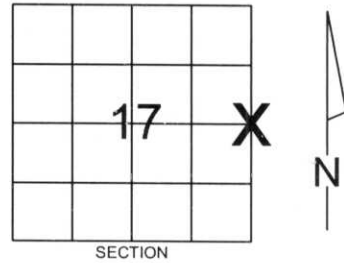
LINCOLN COUNTY COORDINATE: N: 119019.8750

E: 343461.2580

DATE OF SURVEY: July 21, 2006

SURVEY PARTY: Rutzen/Jacobson

- FOUND
- SET
- RE-SET
- RE-TIED



Description of monument found at this corner and if was accepted, state all evidence (material, testimonial, occupational, plats, records, other monuments) used as a basis for accepting. If not accepted or if nothing was found, state evidence used as basis for establishing location. If reestablished through lost corner proportionate methods, indicate all monuments, distances and directions used to establish.

BASIS FOR MONUMENT LOCATION:

(DESCRIBE METHOD OF SURVEY AND CONER AUTHENTICATION)

Monument was set based on roadway and occupational evidence found in the field.



CERTIFIED CORRECT:

Ronald K. Jacobson

Ronald Jacobson RLS 2059-008

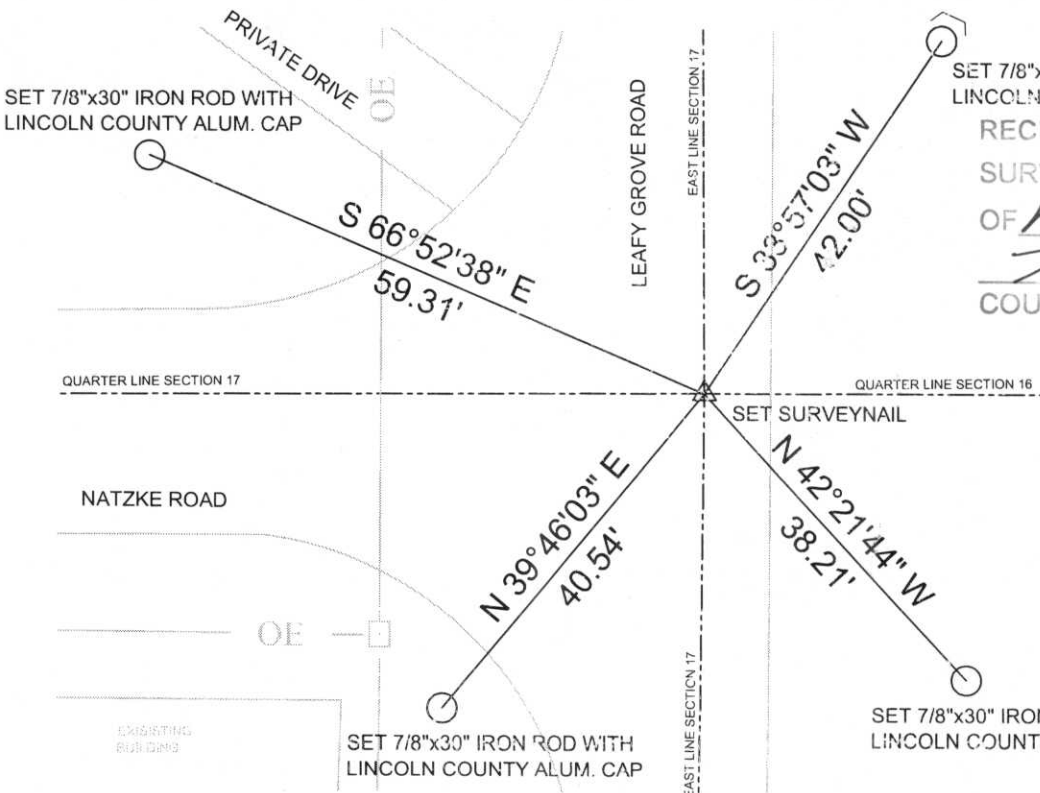
Registered Land Surveyor

DATE: August 4, 2006

COMPANY: Central Wisconsin Engineers & Architects
5707 Schofield Ave.
Weston, Wisconsin 54476
(715) 359-3400

TIE SKETCH:

SHOW MINIMUM OF FOUR (4) HORIZONTAL TIE DISTANCES TO FIXED WITNESS MONUMENTS.
DESCRIBE ALL MONUMENTS FOUND OR SET. ALL DISTANCES SHOWN IN US SURVEY FEET.



SET 7/8"x30" IRON ROD WITH
LINCOLN COUNTY ALUM. CAP AND SIGN
RECEIVED BY LINCOLN COUNTY
SURVEYOR THIS 7TH DAY
OF August 20 06
Tony Dalk
COUNTY SURVEYOR

COORDINATES ARE REFERENCED TO LINCOLN COUNTY COORDINATE SYSTEM AS DEVELOPED BY THE WI. DEPARTMENT OF TRANSPORTATION AND ARE BASED ON GPS OBSERVATIONS TO CONTROL POINTS AS SUPPLIED BY LINCOLN COUNTY.

NOT TO SCALE
BEARINGS REFERENCED TO LINCOLN COUNTY COORDINATE SYSTEM













