

LINCOLN COUNTY U.S. PUBLIC LAND TIE SHEET RECORD

SECTION 15
TOWNSHIP 31N
RANGE 5 E

153154
NO.

LANDMARK

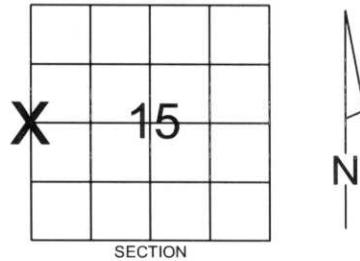
CORNING
CITY, VILLAGE, TOWN

CORNER INDENTITY: BERNSTEN MONUMENT

LINCOLN COUNTY COORDINATE: N: 119023.3076
E: 348746.8134

DATE OF SURVEY: July 26, 2006
SURVEY PARTY: Rutzen/Seubert

FOUND
SET
RE-SET
RE-TIED

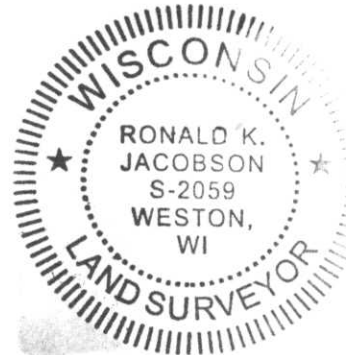


Description of monument found at this corner and if was accepted, state all evidence (material, testimonial, occupational, plats, records, other monuments) used as a basis for accepting. If not accepted or if nothing was found, state evidence used as basis for establishing location. If reestablished through lost corner proportionate methods, indicate all monuments, distances and directions used to establish.

BASIS FOR MONUMENT LOCATION:

(DESCRIBE METHOD OF SURVEY AND CONER AUTHENTICATION)

Monument was set based on road improvements, and occupational evidence found in the field.



CERTIFIED CORRECT:

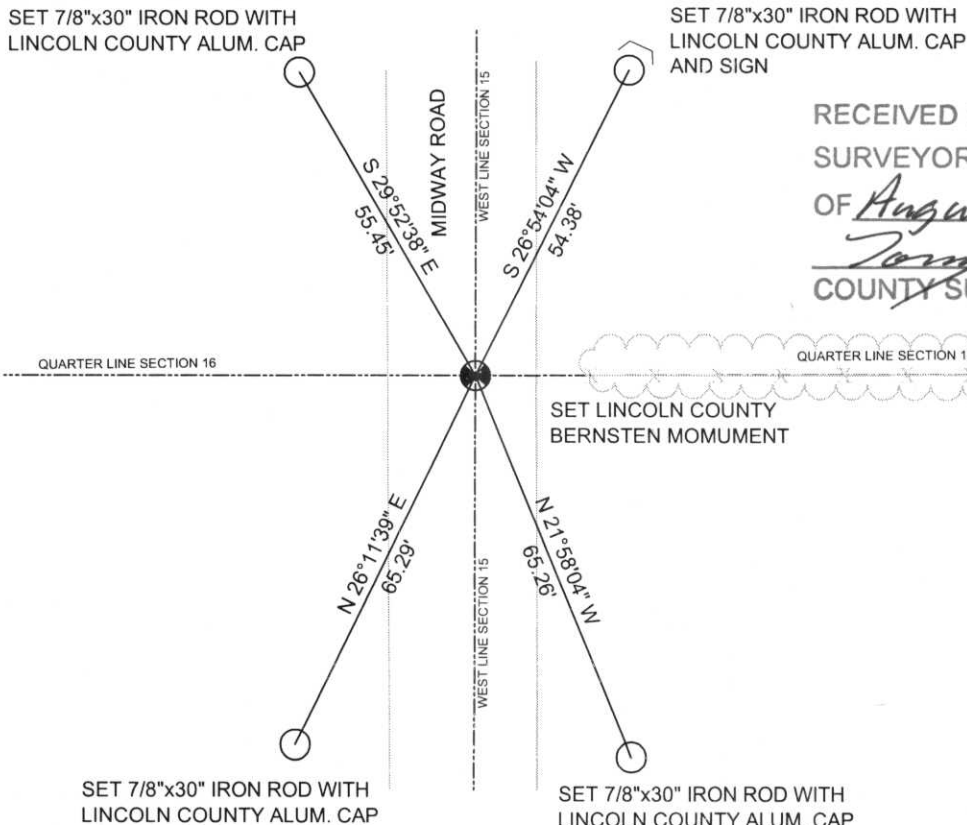
Ronald Jacobson
Ronald Jacobson RLS 2059-008
Registered Land Surveyor

DATE: August 4, 2006

COMPANY: Central Wisconsin Engineers & Architects
5707 Schofield Ave.
Weston, Wisconsin 54476
(715) 359-3400

TIE SKETCH:

SHOW MINIMUM OF FOUR (4) HORIZONTAL TIE DISTANCES TO FIXED WITNESS MONUMENTS.
DESCRIBE ALL MONUMENTS FOUND OR SET. ALL DISTANCES SHOWN IN US SURVEY FEET.



RECEIVED BY LINCOLN COUNTY
SURVEYOR THIS 7TH DAY
OF August 20 06
Tommy Dahl
COUNTY SURVEYOR

COORDINATES ARE REFERENCED TO LINCOLN COUNTY COORDINATE SYSTEM AS DEVELOPED BY THE WI. DEPARTMENT OF TRANSPORTATION AND ARE BASED ON GPS OBSERVATIONS TO CONTROL POINTS AS SUPPLIED BY LINCOLN COUNTY.

NOT TO SCALE
BEARINGS REFERENCED TO LINCOLN COUNTY COORDINATE SYSTEM







