

Stock No. 26273

U.S. PUBLIC LAND SURVEY MONUMENT RECORD

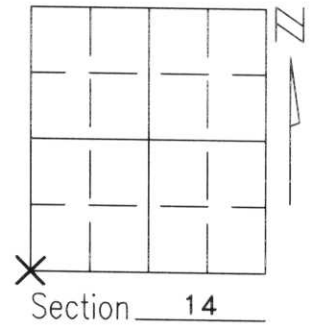
Note: This form is intended and designed to fulfill all requirements of Wisconsin Administrative Code, Chapter A-E 5.02, U.S. Public Land Survey Monument Record (3)(a)(b)(c)(d)(e)(f)(g)(h)(i). An additional sheet may be added if necessary to conform with said requirements.

(a) Corner location: Township 31 North

Range 5 East

Town/City/Village CORNING

County LINCOLN



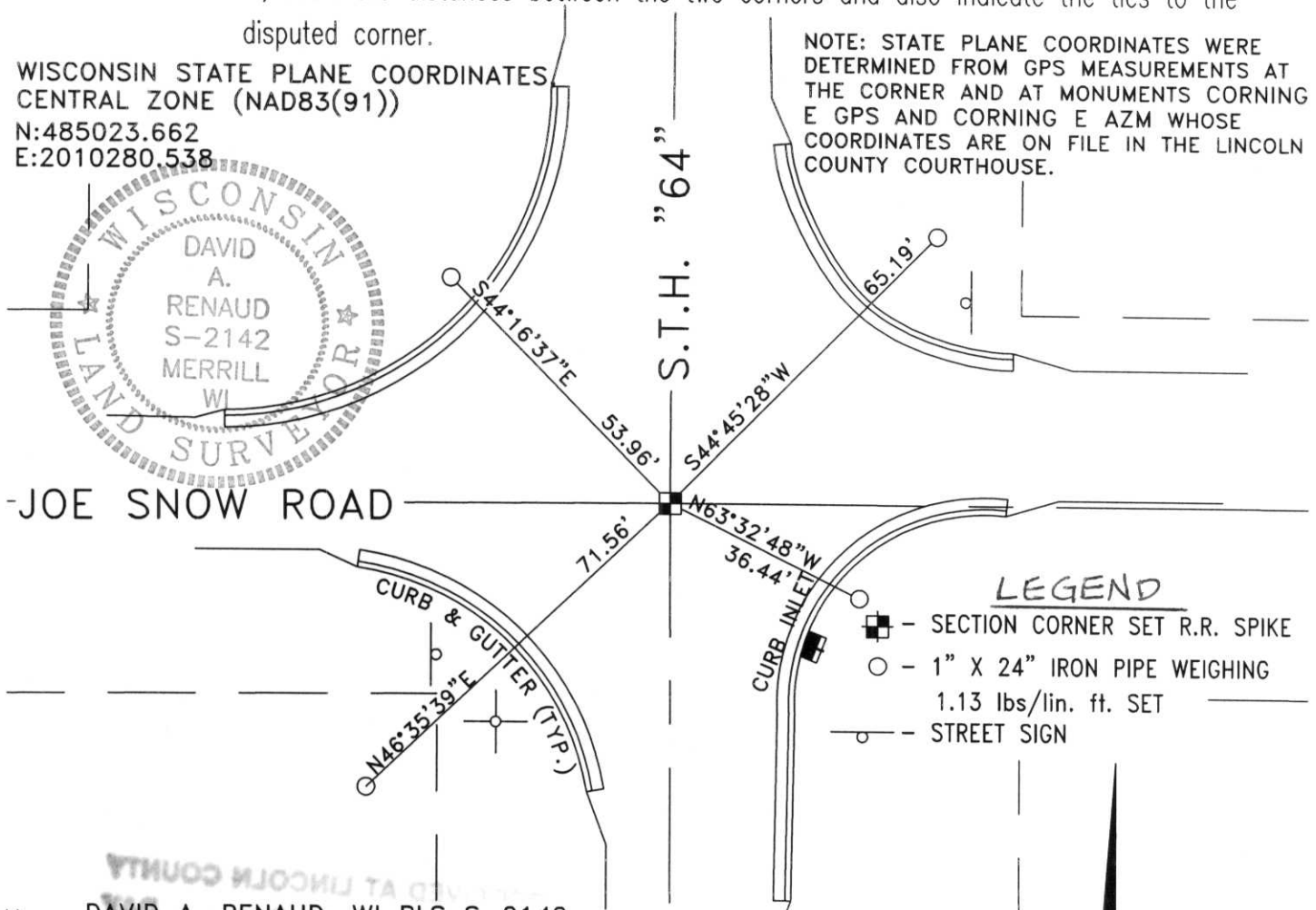
(b)(f)(g)(h) Description of monument found at this corner and if it was accepted, state all evidence (material, testimonial, occupational, plats, records, other monuments) used as a basis for accepting. If not accepted or if nothing was found, state evidence used as basis for establishing location. If reestablished through lost corner proportionate methods, indicate all monuments, distances and directions used to establish.

I ATTEMPTED TO DIG AT THE CENTERLINE OF S.T.H. 64, WHICH IS INDICATED AS BEING ON THE SECTION LINE ON W.D.O.T. RIGHT-OF-WAY PLAT NO.7035, AND A POINT WHICH MEASURED WITHIN 5 FEET OF ORIGINAL SURVEY DIMENSIONS FROM OCCUPATION LINES FROM BOTH 1/2 MILE NORTH AND 1/2 MILE SOUTH. WE ENCOUNTERED REINFORCED CONCRETE AND WERE UNABLE TO PENETRATE THE PAVEMENT WITH A CONVENTIONAL BACKHOE, AND THUS FOUND NO EVIDENCE OF THE ORIGINAL MONUMENTATION OF THE CORNER. I ACCEPTED THE CENTERLINE OF S.T.H. 64 AS THE EAST & WEST LOCATION AND THE OCCUPATION LINES NORTH & SOUTH AS THE NORTH & SOUTH LOCATION OF THE BEST AVAILABLE EVIDENCE OF THE CORNER'S ORIGINAL LOCATION.

(c)(d)(e) Plan view of corner with ties to at least 4 witness monuments. If in disagreement with previously established corner, show the distances between the two corners and also indicate the ties to the disputed corner.

WISCONSIN STATE PLANE COORDINATES
CENTRAL ZONE (NAD83(91))
N:485023.662
E:2010280.538

NOTE: STATE PLANE COORDINATES WERE DETERMINED FROM GPS MEASUREMENTS AT THE CORNER AND AT MONUMENTS CORNING E GPS AND CORNING E AZM WHOSE COORDINATES ARE ON FILE IN THE LINCOLN COUNTY COURTHOUSE.



LEGEND

- - SECTION CORNER SET R.R. SPIKE
- - 1" X 24" IRON PIPE WEIGHING 1.13 lbs/lin. ft. SET
- - STREET SIGN



SCALE : 1" = 30'



Index No. 17-17

i) I, DAVID A. RENAUD, WI RLS S-2142

certify that the corner location on this record was determined by me or under my direction and control and that this U.S. Public Land Survey Monument Record is correct and complete to the best of my knowledge and belief.

David A. Renaud 1-6-00
Signature Date