

Stock No. 26273

U.S. PUBLIC LAND SURVEY MONUMENT RECORD

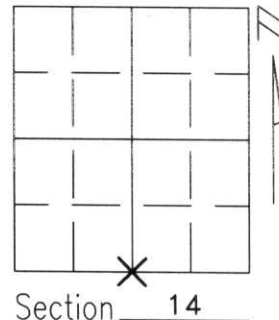
Note: This form is intended and designed to fulfill all requirements of Wisconsin Administrative Code, Chapter A-E 5.02, U.S. Public Land Survey Monument Record (3)(a)(b)(c)(d)(e)(f)(g)(h)(i). An additional sheet may be added if necessary to conform with said requirements.

(a) Corner location: Township 31 North

Range 5 East

Town/City/Village CORNING

County LINCOLN



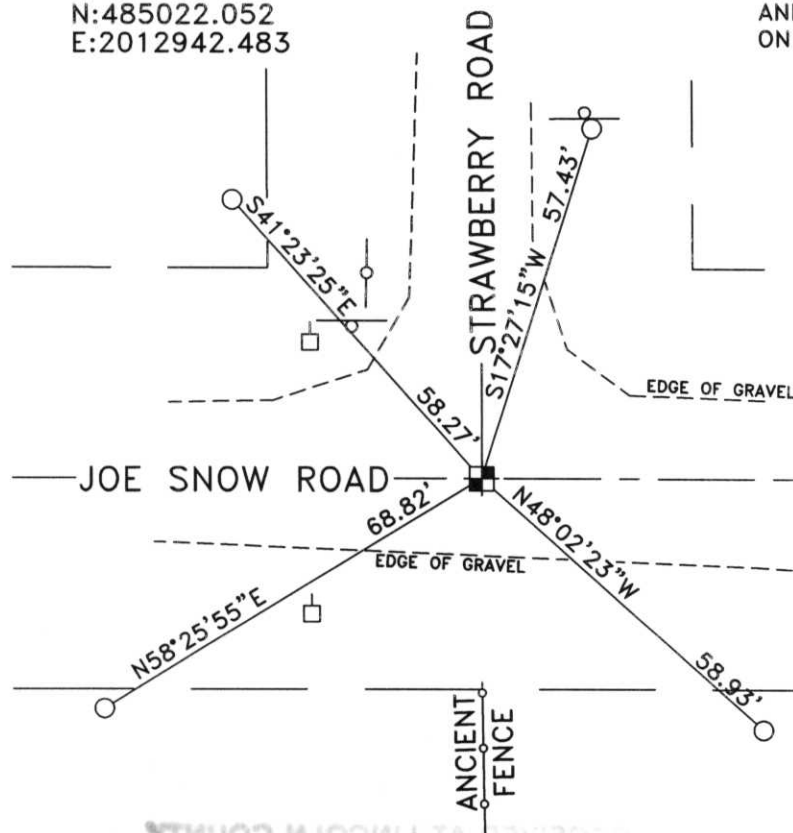
(b)(f)(g)(h) Description of monument found at this corner and if it was accepted, state all evidence (material, testimonial, occupational, plats, records, other monuments) used as a basis for accepting. If not accepted or if nothing was found, state evidence used as basis for establishing location. If reestablished through lost corner proportionate methods, indicate all monuments, distances and directions used to establish.

i DUG AT THE CENTERLINE INTERSECTION OF STRAWBERRY ROAD AND JOE SNOW ROAD AT A POINT WHICH FIT FAIRLY WELL WITH ORIGINAL SURVEY MEASUREMENTS AND WAS IN LINE WITH AN OLD FENCE TO THE SOUTH. WE DUG DOWN INTO THE APPARENTLY ORIGINAL UNDISTURBED SOIL AND FOUND NO EVIDENCE OF THE ORIGINAL MONUMENTATION. I ACCEPTED THIS INTERSECTION AS THE BEST POSSIBLE EVIDENCE OF THE ORIGINAL CORNER'S LOCATION.

(c)(d)(e) Plan view of corner with ties to at least 4 witness monuments. If in disagreement with previously established corner, show the distances between the two corners and also indicate the ties to the disputed corner.

WISCONSIN STATE PLANE COORDINATES,
CENTRAL ZONE (NAD83(91))
N:485022.052
E:2012942.483

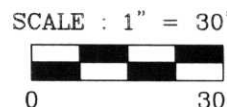
NOTE: STATE PLANE COORDINATES WERE DETERMINED FROM GPS MEASUREMENTS AT THE CORNER AND AT MONUMENTS CORNING E GPS AND CORNING E AZM WHOSE COORDINATES ARE ON FILE IN THE LINCOLN COUNTY COURTHOUSE.



- - SECTION CORNER-SET LINCOLN COUNTY AL. MONUMENT
- - POWER POLE
- - 1" X 24" IRON PIPE WEIGHING 1.13 lbs/lin. ft. SET
- - STREET SIGN

(i) I, DAVID A. RENAUD, WI RLS S-2142
certify that the corner location on this record was determined by me or under my direction and control and that this U.S. Public Land Survey Monument Record is correct and complete to the best of my knowledge and belief.

David A. Renaud 1-6-00
Signature Date



Index No. 11-11